

Product datasheet

Anti-CALHM1 antibody ab106561

3 图像

概述

产品名称	Anti-CALHM1抗体
描述	兔多克隆抗体to CALHM1
宿主	Rabbit
特异性	This antibody is predicted to not crossreact with CALHM2 or CALHM3.
经测试应用	适用于: ICC/IF, WB, IHC-P
种属反应性	与反应: Mouse, Rat, Human
免疫原	Synthetic peptide corresponding to 17 amino acids near the amino terminus of Human CALHM1 (NP_001001412).
阳性对照	Rat liver tissue lysate; Rat liver tissue

性能

形式	Liquid
存放说明	Shipped at 4°C. Store at 4°C (stable for up to 12 months).
存储溶液	Preservative: 0.02% Sodium Azide Constituents: PBS
纯度	Immunogen affinity purified
克隆	多克隆
同种型	IgG

应用

Our [Abpromise guarantee](#) covers the use of **ab106561** in the following tested applications.

The application notes include recommended starting dilutions; optimal dilutions/concentrations should be determined by the end user.

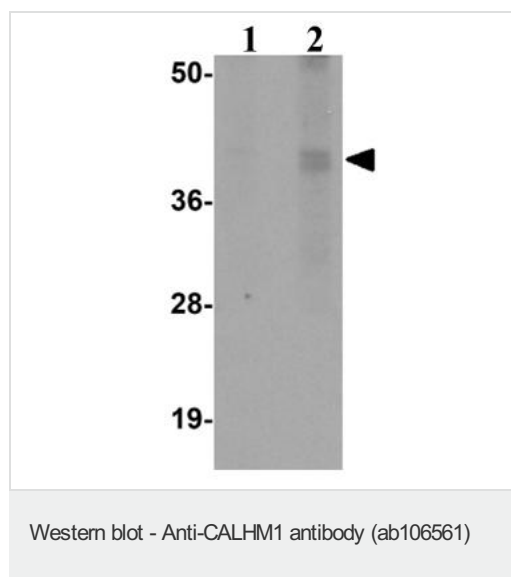
应用	Ab评论	说明
ICC/IF		Use a concentration of 20 µg/ml.
WB		Use a concentration of 1 - 2 µg/ml. Predicted molecular weight: 38 kDa.

应用	Ab评论	说明
IHC-P		Use a concentration of 5 µg/ml.

靶标

功能	May be a pore-forming ion channel. Controls cytosolic Ca(2+) permeability and cytosolic Ca(2+) concentration. Controls amyloid precursor protein (APP) proteolysis and aggregated amyloid-beta (Abeta) peptides levels in a Ca(2+) dependent manner.
组织特异性	Predominantly expressed in adult brain. Detected also in retinoic acid-differentiated SH-SY5Y cells.
序列相似性	Belongs to the FAM26 family.
细胞定位	Cell membrane. Endoplasmic reticulum membrane. Colocalizes with HSPA5 at the endoplasmic reticulum.

图片



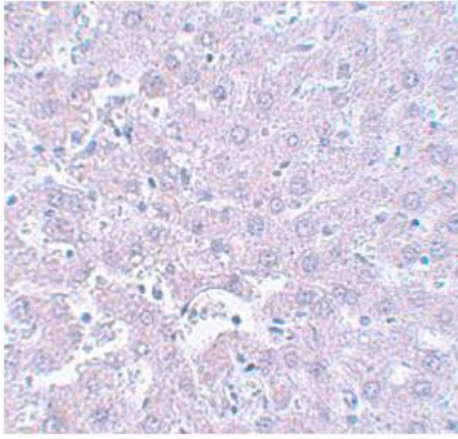
Lane 1 : Anti-CALHM1 antibody (ab106561)
at 1 µg/ml

Lane 2 : Anti-CALHM1 antibody (ab106561)
at 2 µg/ml

All lanes : Rat liver tissue lysate

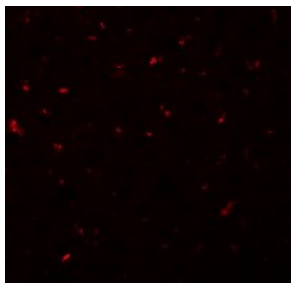
Lysates/proteins at 15 µg per lane.

Predicted band size: 38 kDa



Immunohistochemical analysis of CALHM1 in paraffin embedded Rat liver tissue, using ab106561 at 5 µg/ml.

Immunohistochemistry (Formalin/PFA-fixed paraffin-embedded sections) - Anti-CALHM1 antibody (ab106561)



Immunofluorescence of CALHM1 in Rat Liver cells using ab106561 at 20 ug/ml.

Immunocytochemistry/ Immunofluorescence - Anti-CALHM1 antibody (ab106561)

Please note: All products are "FOR RESEARCH USE ONLY AND ARE NOT INTENDED FOR DIAGNOSTIC OR THERAPEUTIC USE"

Our Abpromise to you: Quality guaranteed and expert technical support

- Replacement or refund for products not performing as stated on the datasheet
- Valid for 12 months from date of delivery
- Response to your inquiry within 24 hours
- We provide support in Chinese, English, French, German, Japanese and Spanish
- Extensive multi-media technical resources to help you
- We investigate all quality concerns to ensure our products perform to the highest standards

If the product does not perform as described on this datasheet, we will offer a refund or replacement. For full details of the Abpromise, please visit <https://www.abcam.cn/abpromise> or contact our technical team.

Terms and conditions

- Guarantee only valid for products bought direct from Abcam or one of our authorized distributors