


Product datasheet

Anti-C5 / C5a antibody ab46168

敲除 验证

1 References 2 图像

概述

|       |  |
|-------|--|
| 产品名称  | Anti-C5 / C5a抗体  |
| 描述    | 兔多克隆抗体to C5 / C5a  |
| 宿主    | Rabbit   |
| 经测试应用 | 适用于: WB  |
| 种属反应性 | 与反应: Human<br>预测可用于: Mouse   |
| 免疫原   | Synthetic peptide corresponding to Human C5/ C5a aa 1450-1550 conjugated to Keyhole Limpet Haemocyanin (KLH).<br>(Peptide available as <a href="#">ab46167</a> ) |
| 阳性对照  | This antibody gave a positive signal in purified human Complement C5 protein.  |
| 常规说明  | This antibody binds specifically to the alpha / alpha' chain of C5, which forms part of C5b  |

性能

|                    |  |
|--------------------|--|
| 形式                 | Liquid   |
| 存放说明               | Shipped at 4°C. Store at +4°C short term (1-2 weeks). Upon delivery aliquot. Store at -20°C or -80°C. Avoid freeze / thaw cycle. |
| 存储溶液               | Preservative: 0.02% Sodium Azide<br>Constituents: 1% BSA, PBS, pH 7.4  |
| 纯度                 | Immunogen affinity purified  |
| Primary antibody说明 | This antibody binds specifically to the alpha / alpha' chain of C5, which forms part of C5b                                      |
| 克隆                 | 多克隆  |
| 同种型                | IgG  |

应用

Our [Abpromise guarantee](#) covers the use of **ab46168** in the following tested applications.

The application notes include recommended starting dilutions; optimal dilutions/concentrations should be determined by the end user.

| 应用 | Ab 评论 | 说明 |
|----|-------|----|
|----|-------|----|

|    |  |   |
|----|--|---|
| WB |  | Use a concentration of 1 µg/ml. Detects a band of approximately 115 kDa (predicted molecular weight: 188 kDa). Can be blocked with <a href="#">C5 / C5b peptide (ab46167)</a> . |
|----|--|---|

## 靶标

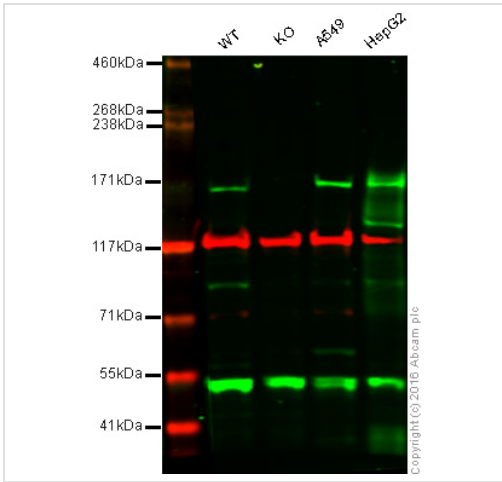
**功能** Activation of C5 by a C5 convertase initiates the spontaneous assembly of the late complement components, C5-C9, into the membrane attack complex. C5b has a transient binding site for C6. The C5b-C6 complex is the foundation upon which the lytic complex is assembled. Derived from proteolytic degradation of complement C5, C5 anaphylatoxin is a mediator of local inflammatory process. It induces the contraction of smooth muscle, increases vascular permeability and causes histamine release from mast cells and basophilic leukocytes. C5a also stimulates the locomotion of polymorphonuclear leukocytes (chemokinesis) and direct their migration toward sites of inflammation (chemotaxis).

**疾病相关** Complement component 5 deficiency  
An association study of C5 haplotypes and genotypes in individuals with chronic hepatitis C virus infection shows that individuals homozygous for the C5\_1 haplotype have a significantly higher stage of liver fibrosis than individuals carrying at least 1 other allele (PubMed:15995705).

**序列相似性** Contains 1 anaphylatoxin-like domain.  
Contains 1 NTR domain.

**细胞定位** Secreted.

## 图片



Western blot - Anti-C5 / C5a antibody (ab46168)

**Lane 1:** Wild type HAP1 whole cell lysate (20  $\mu$ g)

**Lane 2:** C5 knockout HAP1 whole cell lysate (20  $\mu$ g)

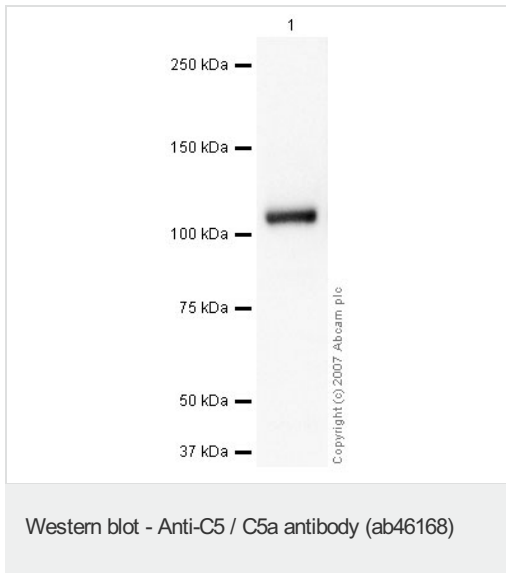
**Lane 3:** A549 whole cell lysate (20  $\mu$ g)

**Lane 4:** HepG2 whole cell lysate (20  $\mu$ g)

**Lanes 1 - 4:** Merged signal (red and green).

Green - ab46168 observed at 170 kDa. Red - loading control, [ab18058](#), observed at 130 kDa.

ab46168 was shown to recognize C5 when C5 knockout samples were used, along with additional cross-reactive bands. Wild-type and C5 knockout samples were subjected to SDS-PAGE. Ab46168 and [ab18058](#) (Mouse anti Vinculin loading control) were incubated overnight at 4°C at 1  $\mu$ g/ml and 1/10000 dilution respectively. Blots were developed with 800CW Goat anti Rabbit and 680CW Goat anti Mouse secondary antibodies at 1/10003 dilution for 1 hour at room temperature before imaging.



Anti-C5 / C5a antibody (ab46168) at 1 µg/ml +  
Human Complement C5 Protein at 0.1 µg

### Secondary

Goat polyclonal to Rabbit IgG - H&L - Pre-Adsorbed (HRP) at 1/3000 dilution

Performed under reducing conditions.

**Predicted band size:** 188 kDa

**Observed band size:** 115 kDa

Complement component C5 protein is comprised of an alpha and beta chain which have predicted molecular weights of 115 kDa and 75 kDa respectively. ab46168 specifically detects the C5 alpha chain.

**Please note:** All products are "FOR RESEARCH USE ONLY AND ARE NOT INTENDED FOR DIAGNOSTIC OR THERAPEUTIC USE"

### Our Abpromise to you: Quality guaranteed and expert technical support

- Replacement or refund for products not performing as stated on the datasheet
- Valid for 12 months from date of delivery
- Response to your inquiry within 24 hours
- We provide support in Chinese, English, French, German, Japanese and Spanish
- Extensive multi-media technical resources to help you
- We investigate all quality concerns to ensure our products perform to the highest standards

If the product does not perform as described on this datasheet, we will offer a refund or replacement. For full details of the Abpromise, please visit <https://www.abcam.cn/abpromise> or contact our technical team.

### Terms and conditions

- Guarantee only valid for products bought direct from Abcam or one of our authorized distributors