


Product datasheet

Anti-KLHL12 antibody ab101994

1 图像

概述

产品名称	Anti-KLHL12抗体
描述	兔多克隆抗体to KLHL12
宿主	Rabbit
经测试应用	适用于: IP 不适用于: WB
种属反应性	与反应: Human 预测可用于: Mouse, Rat, Rabbit, Horse, Chicken, Guinea pig, Cow, Dog, Turkey, Pig, Chimpanzee, Rhesus monkey, Gorilla, Orangutan, Platypus 
免疫原	Synthetic peptide within Human KLHL12 aa 150-200. The exact sequence is proprietary. Database link: NP_067646.1
阳性对照	IP: HeLa whole cell lysate.

性能

形式	Liquid
存放说明	Shipped at 4°C. Upon delivery aliquot and store at -20°C. Avoid freeze / thaw cycles.
存储溶液	Preservative: 0.09% Sodium azide Constituent: Tris citrate/phosphate
纯度	Immunogen affinity purified
克隆	多克隆
同种型	IgG

应用

Our [Abpromise guarantee](#) covers the use of **ab101994** in the following tested applications.

The application notes include recommended starting dilutions; optimal dilutions/concentrations should be determined by the end user.

应用	Ab评论	说明
IP		Use at 2-5 µg/mg of lysate.

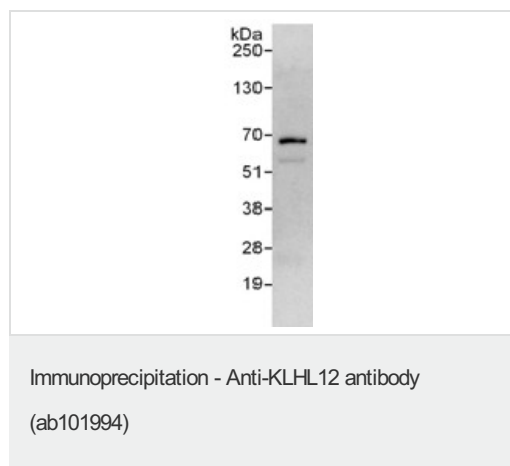
应用说明

Is unsuitable for WB.

靶标

功能	Serves as a substrate-specific adapter for the CUL3-based ubiquitin-protein E3 ligase complex. Negatively regulates the Wnt signaling pathway via the targeted ubiquitination and subsequent proteolysis of DVL3.
组织特异性	Highly expressed in testis and at lower levels in the submandibular salivary gland.
序列相似性	Contains 1 BTB (POZ) domain. Contains 6 Kelch repeats.
结构域	The BTB domain is required for interaction with CUL3.

图片



ab101996 at 1 $\mu\text{g/ml}$ staining KLHL12 in HeLa cell lysate immunoprecipitated using ab101994 at 3 $\mu\text{g/mg}$ lysate (1 mg/IP; 20% of IP loaded/lane). Detection: Chemiluminescence with an exposure time of 30 seconds

Please note: All products are "FOR RESEARCH USE ONLY AND ARE NOT INTENDED FOR DIAGNOSTIC OR THERAPEUTIC USE"

Our Abpromise to you: Quality guaranteed and expert technical support

- Replacement or refund for products not performing as stated on the datasheet
- Valid for 12 months from date of delivery
- Response to your inquiry within 24 hours
- We provide support in Chinese, English, French, German, Japanese and Spanish
- Extensive multi-media technical resources to help you
- We investigate all quality concerns to ensure our products perform to the highest standards

If the product does not perform as described on this datasheet, we will offer a refund or replacement. For full details of the Abpromise, please visit <https://www.abcam.cn/abpromise> or contact our technical team.

Terms and conditions

- Guarantee only valid for products bought direct from Abcam or one of our authorized distributors