

Product datasheet

Anti-Bcl-2 antibody [E17] ab32124

敲除验证
重组
RabMAb

★★★★☆
11 Abreviews
116 References
13 图像

概述

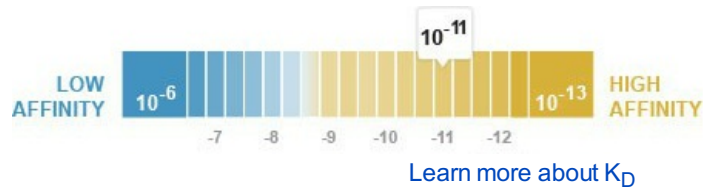
产品名称	Anti-Bcl-2抗体[E17]
描述	兔单克隆抗体[E17] to Bcl-2
宿主	Rabbit
特异性	The antibody recognises Bcl-2. It does not cross-react with other Bcl-2 family members.
经测试应用	适用于: WB, IHC-P, ICC/IF, IP 不适用于: Flow Cyt
种属反应性	与反应: Human
免疫原	Synthetic peptide within Human Bcl-2 aa 50-150. The exact sequence is proprietary. Database link: P10415
阳性对照	WB: MCF-7, A431, Jurkat, HeLa and SH-SY5Y cell lysates. IHC-P: human B-cell lymphoma, lung adenocarcinoma and breast carcinoma tissues. ICC/IF: MCF-7 cells. Flow Cyt: Jurkat cells. IP: Jurkat cell lysate.
常规说明	<p>A trial size is available for this product.</p> <p>Rat: We have preliminary internal testing data to indicate this antibody may not react with these species. Please contact us for more information.</p> <p>Our RabMAb[®] technology is a patented hybridoma-based technology for making rabbit monoclonal antibodies. For details on our patents, please refer to RabMAb[®] patents</p> <p>We are constantly working hard to ensure we provide our customers with best in class antibodies. As a result of this work we are pleased to now offer this antibody in purified format. We are in the process of updating our datasheets. The purified format is designated 'PUR' on our product labels. If you have any questions regarding this update, please contact our Scientific Support team.</p> <p>This product is a recombinant rabbit monoclonal antibody.</p>

性能

形式	Liquid
存放说明	Shipped at 4°C. Store at +4°C short term (1-2 weeks). Upon delivery aliquot. Store at -20°C. Avoid freeze / thaw cycle.

解离常数 (K_D)

$K_D = 3.00 \times 10^{-11} \text{ M}$



存储溶液

pH: 7.20
Preservative: 0.01% Sodium azide
Constituents: 59% PBS, 40% Glycerol, 0.05% BSA

纯度

Protein A purified

克隆

单克隆

克隆编号

E17

同种型

IgG

应用

Our [Abpromise guarantee](#) covers the use of **ab32124** in the following tested applications.

The application notes include recommended starting dilutions; optimal dilutions/concentrations should be determined by the end user.

应用	Ab评论	说明
WB	★★★☆☆	1/1000. Detects a band of approximately 26 kDa (predicted molecular weight: 26 kDa). We recommend using ab182858 for murine samples.
IHC-P	★★★★★	1/250 - 1/500. Perform heat mediated antigen retrieval with Tris/EDTA buffer pH 9.0 before commencing with IHC staining protocol. See IHC antigen retrieval protocols . We do not recommend rat and mouse samples with IHC.
ICC/IF	★★★☆☆	1/100.
IP	★★★★★	1/50.

应用说明

Is unsuitable for Flow Cyt.

靶标

功能

Suppresses apoptosis in a variety of cell systems including factor-dependent lymphohematopoietic and neural cells. Regulates cell death by controlling the mitochondrial membrane permeability. Appears to function in a feedback loop system with caspases. Inhibits caspase activity either by preventing the release of cytochrome c from the mitochondria and/or by binding to the apoptosis-activating factor (APAF-1). May attenuate inflammation by impairing NLRP1-inflammasome activation, hence CASP1 activation and IL1B release (PubMed:17418785).

组织特异性

Expressed in a variety of tissues.

疾病相关

A chromosomal aberration involving BCL2 has been found in chronic lymphatic leukemia. Translocation t(14;18)(q32;q21) with immunoglobulin gene regions. BCL2 mutations found in

non-Hodgkin lymphomas carrying the chromosomal translocation could be attributed to the Ig somatic hypermutation mechanism resulting in nucleotide transitions.

序列相似性

Belongs to the Bcl-2 family.

结构域

BH1 and BH2 domains are required for the interaction with BAX and for anti-apoptotic activity. The BH4 motif is required for anti-apoptotic activity and for interaction with RAF1 and EGLN3. The loop between motifs BH4 and BH3 is required for the interaction with NLRP1.

翻译后修饰

Phosphorylation/dephosphorylation on Ser-70 regulates anti-apoptotic activity. Growth factor-stimulated phosphorylation on Ser-70 by PKC is required for the anti-apoptosis activity and occurs during the G2/M phase of the cell cycle. In the absence of growth factors, BCL2 appears to be phosphorylated by other protein kinases such as ERKs and stress-activated kinases. Phosphorylated by MAPK8/JNK1 at Thr-69, Ser-70 and Ser-87, which stimulates starvation-induced autophagy. Dephosphorylated by protein phosphatase 2A (PP2A).

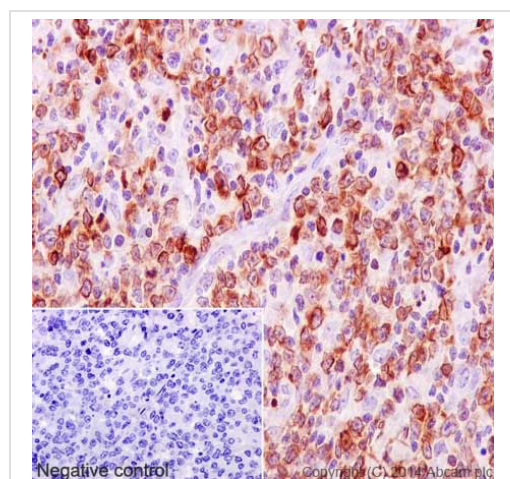
Proteolytically cleaved by caspases during apoptosis. The cleaved protein, lacking the BH4 motif, has pro-apoptotic activity, causes the release of cytochrome c into the cytosol promoting further caspase activity.

Monoubiquitinated by PARK2, leading to increase its stability. Ubiquitinated by SCF(FBXO10), leading to its degradation by the proteasome.

细胞定位

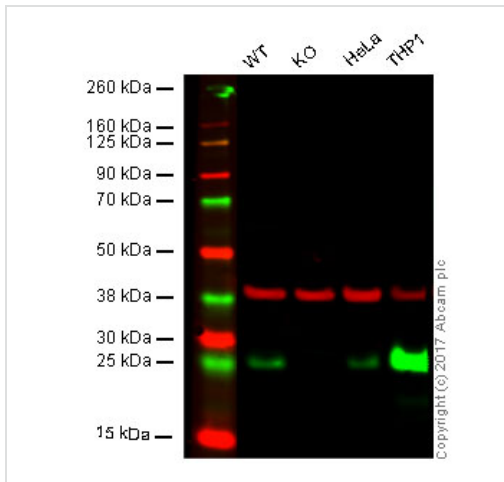
Mitochondrion outer membrane. Nucleus membrane. Endoplasmic reticulum membrane.

图片



Immunohistochemistry (Formalin/PFA-fixed paraffin-embedded sections) analysis of human B-cell lymphoma tissue labelling Bcl-2 with purified ab32124 at 1/250. Heat mediated antigen retrieval was performed using Tris/EDTA buffer pH 9. [ab97051](#), a HRP-conjugated goat anti-rabbit IgG (H+L) was used as the secondary antibody (1/500). Negative control using PBS instead of primary antibody. Counterstained with hematoxylin.

Immunohistochemistry (Formalin/PFA-fixed paraffin-embedded sections) - Anti-Bcl-2 antibody [E17] (ab32124)



Western blot - Anti-Bcl-2 antibody [E17] (ab32124)

Lane 1: Wild type HAP1 whole cell lysate (20 μ g)

Lane 2: BCL2 knockout HAP1 whole cell lysate (20 μ g)

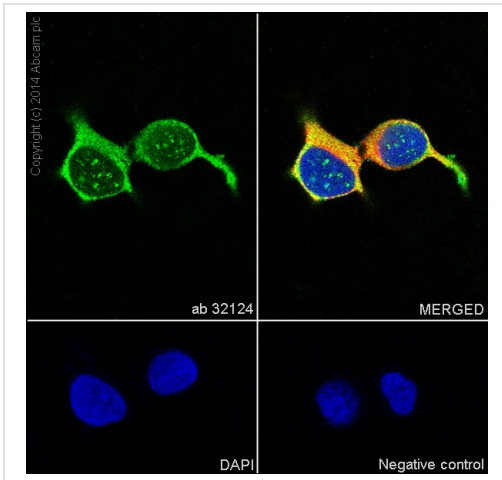
Lane 3: HeLa whole cell lysate (20 μ g)

Lane 4: THP-1 whole cell lysate (20 μ g)

Lanes 1 - 4: Merged signal (red and green).

Green - ab32124 observed at 26 kDa. Red - loading control, [ab8245](#), observed at 37 kDa.

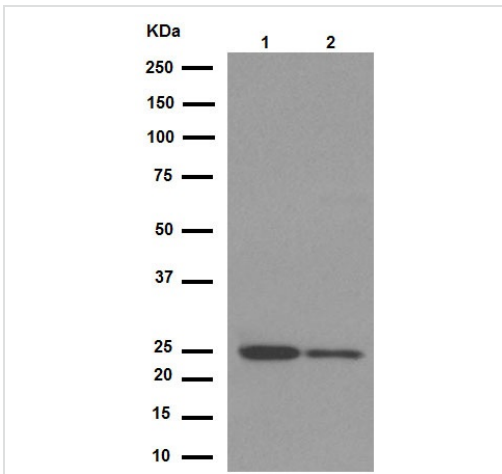
ab32124 was shown to specifically react with BCL2 when BCL2 knockout samples were used. Wild-type and BCL2 knockout samples were subjected to SDS-PAGE. Ab32124 and [ab8245](#) (Mouse anti GAPDH loading control) were incubated overnight at 4°C at 1000 dilution and 1/10000 dilution respectively. Blots were developed with Goat anti-Rabbit IgG H&L (IRDye® 800CW) preabsorbed [ab216773](#) and Goat anti-Mouse IgG H&L (IRDye® 680RD) preabsorbed [ab216776](#) secondary antibodies at 1/10000 dilution for 1 hour at room temperature before imaging. 3% milk used as blocking agent.



Immunocytochemistry/ Immunofluorescence - Anti-Bcl-2 antibody [E17] (ab32124)

Immunocytochemistry/Immunofluorescence analysis of MCF-7 cells labelling Bcl-2 with unpurified ab32124 at 1/100. Cells were fixed with 4% paraformaldehyde and permeabilized with 0.1% Triton X-100. An Alexa Fluor[®] 488-conjugated goat anti-rabbit IgG (1/500) was used as the secondary antibody. The cells were co-stained with ab7291, a mouse anti-tubulin antibody (1/500) using ab150120, an Alexa Fluor[®] 594-conjugated goat anti-mouse IgG (1/500) as the secondary. Nuclei counterstained with DAPI (blue).

Control: primary antibody (1/100) and secondary antibody, ab150120, an Alexa Fluor[®] 594-conjugated goat anti-mouse IgG (1/500).



Western blot - Anti-Bcl-2 antibody [E17] (ab32124)

All lanes : Anti-Bcl-2 antibody [E17] (ab32124) at 1/1000 dilution (purified)

Lane 1 : MCF-7 cell lysate

Lane 2 : A431 cell lysate

Lysates/proteins at 20 µg per lane.

Secondary

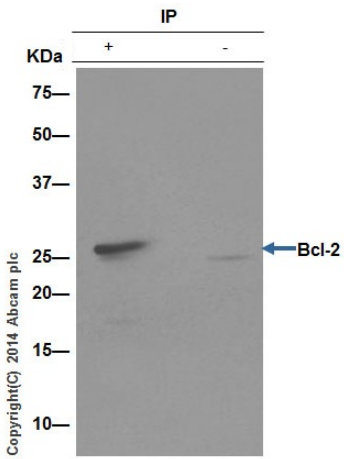
All lanes : Peroxidase-conjugated goat anti-rabbit IgG (H+L) at 1/1000 dilution

Predicted band size: 26 kDa

Observed band size: 26 kDa

Blocking buffer and concentration: 5% NFDm/TBST.

Diluting buffer and concentration: 5% NFDm /TBST.

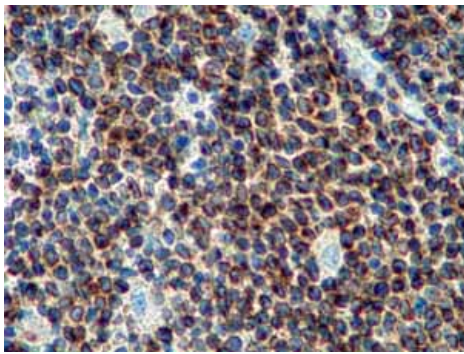


Immunoprecipitation - Anti-Bcl-2 antibody [E17]
(ab32124)

ab32124 (purified) at 1/30
immunoprecipitating Bcl-2 in Jurkat cell lysate
(Lane 1). Lane 2 - PBS. For western blotting,
a HRP-conjugated anti-rabbit IgG, specific to
the non-reduced form of IgG was used as the
secondary antibody (1/1500).

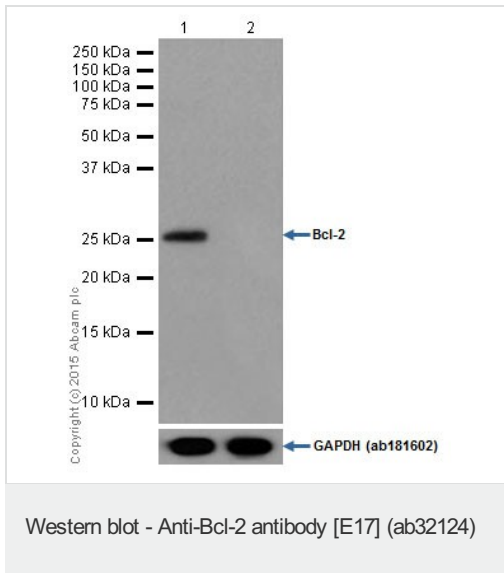
Blocking buffer and concentration: 5%
NFDm/TBST.

Diluting buffer and concentration: 5% NFDm
/TBST.



Immunohistochemistry (Formalin/PFA-fixed paraffin-
embedded sections) - Anti-Bcl-2 antibody [E17]
(ab32124)

Immunohistochemistry (Formalin/PFA-fixed
paraffin-embedded sections) analysis of
human B cell lymphoma tissue labelling Bcl-2
with unpurified ab32124.



All lanes : Anti-Bcl-2 antibody [E17]
(ab32124) at 1/200 dilution

Lane 1 : MCF-7

Lane 2 : SK-BR-3

Lysates/proteins at 10 µg per lane.

Secondary

All lanes : Peroxidase-conjugated goat anti-rabbit IgG (H+L) at 1/50000 dilution

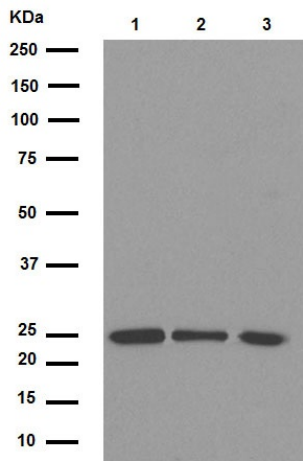
Predicted band size: 26 kDa

Observed band size: 26 kDa

Blocking buffer and concentration: 5%
NFDm/TBST.

Diluting buffer and concentration: 5% NFDm
/TBST.

MCF-7 cells express Bcl-2, while SK-BR-3
cells do not express Bcl-2 (PMID: 18430249)



Western blot - Anti-Bcl-2 antibody [E17] (ab32124)

All lanes : Anti-Bcl-2 antibody [E17] (ab32124) at 1/10000 dilution (purified)

Lane 1 : Jurkat cell lysate

Lane 2 : HeLa cell lysate

Lane 3 : SH-SY5Y cell lysate

Lysates/proteins at 20 µg per lane.

Secondary

All lanes : Peroxidase-conjugated goat anti-rabbit IgG (H+L) at 1/1000 dilution

Predicted band size: 26 kDa

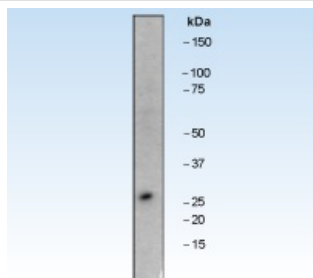
Observed band size: 26 kDa

Blocking buffer and concentration: 5%

NFDM/TBST.

Diluting buffer and concentration: 5% NFDM

/TBST.

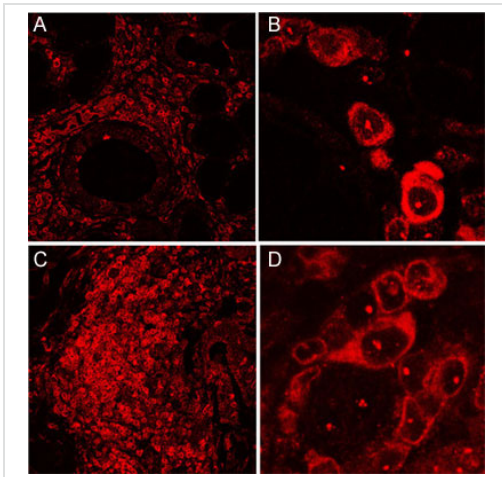


Western blot - Anti-Bcl-2 antibody [E17] (ab32124)

Anti-Bcl-2 antibody [E17] (ab32124) at 1/1000 dilution (unpurified) + Jurkat cell lysate

Predicted band size: 26 kDa

Observed band size: 26 kDa



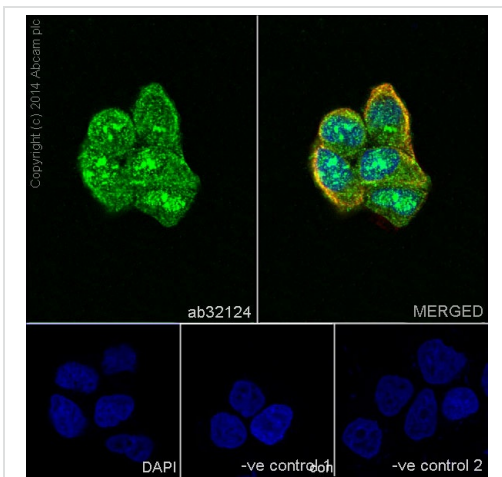
Immunohistochemistry (Formalin/PFA-fixed paraffin-embedded sections) - Anti-Bcl-2 antibody [E17] (ab32124)

Image from Szyszko EA et al., Arthritis Res Ther. 2011 Jan 7;13(1):R2. Fig 5.; doi:10.1186/ar3220; 7 January 2011, Arthritis Research & Therapy 2011, 13:R2

Immunohistochemical analysis of Human salivary glands taken from patients with primary Sjögren's syndrome, staining Bcl-2 with unpurified ab32124.

Antigen retrieval was performed via heat mediation in a citrate buffer (pH 6). Sections were blocked using 2% BSA, 10% normal serum and permeabilized with 0.5% Triton X-100. Samples were incubated with primary antibody (1/100) for one hour at room temperature. An Alexa Fluor® 594-conjugated anti-rabbit IgG was used as the secondary antibody.

N.B. Panels B and D are higher magnifications of panels A and C, respectively.

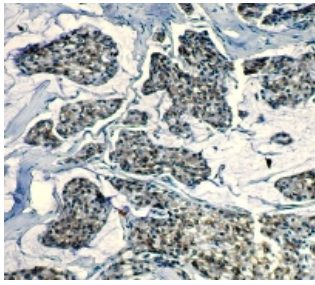


Immunocytochemistry/ Immunofluorescence - Anti-Bcl-2 antibody [E17] (ab32124)

Immunocytochemistry/Immunofluorescence analysis of MCF-7 cells labelling Bcl-2 with purified ab32124 at 1/100. Cells were fixed with 4% paraformaldehyde and permeabilized with 0.1% Triton X-100. [ab150077](#), an Alexa Fluor® 488-conjugated goat anti-rabbit IgG (1/500) was used as the secondary antibody. The cells were co-stained with [ab7291](#), a mouse anti-tubulin (1/500) using [ab150120](#), an Alexa Fluor® 594-conjugated goat anti-mouse IgG (1/500) as the secondary antibody. Nuclei counterstained with DAPI (blue).

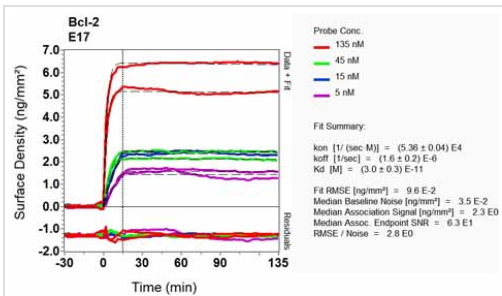
Control 1: primary antibody (1/100) and secondary antibody, [ab150120](#), an Alexa Fluor® 594-conjugated goat anti-mouse IgG (1/500).

Control 2: [ab7291](#) (1/1000) and secondary antibody, [ab150077](#), an Alexa Fluor® 488-conjugated goat anti-rabbit IgG (1/500).



Immunohistochemistry (Formalin/PFA-fixed paraffin-embedded sections) analysis of human breast carcinoma tissue labelling Bcl-2 with unpurified ab32124 at 1/200 dilution.

Immunohistochemistry (Formalin/PFA-fixed paraffin-embedded sections) - Anti-Bcl-2 antibody [E17] (ab32124)



Equilibrium dissociation constant (K_D)

[Click here to learn more about \$K_D\$](#)

Other - Anti-Bcl-2 antibody [E17] (ab32124)

Please note: All products are "FOR RESEARCH USE ONLY AND ARE NOT INTENDED FOR DIAGNOSTIC OR THERAPEUTIC USE"

Our Abpromise to you: Quality guaranteed and expert technical support

- Replacement or refund for products not performing as stated on the datasheet
- Valid for 12 months from date of delivery
- Response to your inquiry within 24 hours
- We provide support in Chinese, English, French, German, Japanese and Spanish
- Extensive multi-media technical resources to help you
- We investigate all quality concerns to ensure our products perform to the highest standards

If the product does not perform as described on this datasheet, we will offer a refund or replacement. For full details of the Abpromise, please visit <https://www.abcam.cn/abpromise> or contact our technical team.

Terms and conditions

- Guarantee only valid for products bought direct from Abcam or one of our authorized distributors