

Product datasheet

Anti-BET1L antibody ab122591

2 图像

概述

产品名称	Anti-BET1L抗体
描述	兔多克隆抗体to BET1L
宿主	Rabbit
经测试应用	适用于: IHC-P, ICC/IF
种属反应性	与反应: Human
免疫原	antigen sequence: MADWARAQSP GAVEEILDRE NKRMAADSLAS KVTRLKSLAL DIDRDAEDQN RYLDGMDSDF TSMTSLLTGS VKRFSTMARS GQ, corresponding to N terminal amino acids 1-82 of Human BET1L (Q9NYM9). Run BLAST with ExPASy Run BLAST with NCBI
阳性对照	Human stomach, human cell line U-2 OS.

性能

形式	Liquid
存放说明	Shipped at 4°C. Store at -20°C.
存储溶液	pH: 7.20 Preservative: 0.02% Sodium azide Constituents: 59% PBS, 40% Glycerol
纯度	Immunogen affinity purified
克隆	多克隆
同种型	IgG

应用

Our [Abpromise guarantee](#) covers the use of **ab122591** in the following tested applications. The application notes include recommended starting dilutions; optimal dilutions/concentrations should be determined by the end user.

应用	Ab 评论	说明
----	-------	----

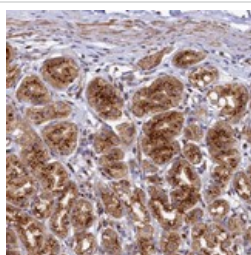
IHC-P 1/1000 - 1/2500. Perform heat mediated antigen retrieval with citrate buffer pH 6 before commencing with IHC staining protocol.

ICC/IF Use a concentration of 1 - 4 µg/ml. The following steps are recommended prior to antibody incubation: cells fixation in ice cold 4% paraformaldehyde pH 7.2-7.3, followed by permeabilization with 0.1% Triton X-100 in PBS for 3x5 minutes.

靶标

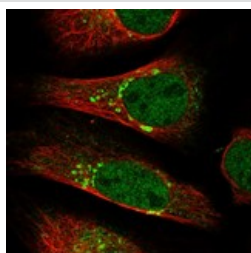
功能	Vesicle SNARE required for targeting and fusion of retrograde transport vesicles with the Golgi complex. Required for the integrity of the Golgi complex.
序列相似性	Contains 1 t-SNARE coiled-coil homology domain.
细胞定位	Golgi apparatus membrane.

图片



ab122591, at 1/1000 dilution, staining human stomach glandular cells by immunohistochemistry of paraffin embedded tissues (IHC-P).

Immunohistochemistry (Formalin/PFA-fixed paraffin-embedded sections) - Anti-BET1L antibody (ab122591)



ab122591, at 4µg/mL, staining human cell line U-2 OS by immunofluorescence (IF).

Immunocytochemistry/ Immunofluorescence - Anti-BET1L antibody (ab122591)

Please note: All products are "FOR RESEARCH USE ONLY AND ARE NOT INTENDED FOR DIAGNOSTIC OR THERAPEUTIC USE"

Our Abpromise to you: Quality guaranteed and expert technical support

- Replacement or refund for products not performing as stated on the datasheet
- Valid for 12 months from date of delivery
- Response to your inquiry within 24 hours

- We provide support in Chinese, English, French, German, Japanese and Spanish
- Extensive multi-media technical resources to help you
- We investigate all quality concerns to ensure our products perform to the highest standards

If the product does not perform as described on this datasheet, we will offer a refund or replacement. For full details of the Abpromise, please visit <https://www.abcam.cn/abpromise> or contact our technical team.

Terms and conditions

- Guarantee only valid for products bought direct from Abcam or one of our authorized distributors