


Product datasheet

Anti-BCRP/ABCG2 antibody ab63907

★★★★☆ 1 Abreviews 3 References 1 图像

概述

产品名称	Anti-BCRP/ABCG2抗体
描述	兔多克隆抗体to BCRP/ABCG2
宿主	Rabbit
经测试应用	适用于: WB
种属反应性	与反应: Mouse, Human, Pig 预测可用于: Rat, Macaque monkey 
免疫原	Synthetic peptide conjugated to KLH derived from within residues 550 - 650 of Human BCRP/ABCG2. 参阅Abcam的专有抗源政策(Peptide available as ab100820 .)
阳性对照	This antibody gave a positive signal in Human Placenta Tissue Lysate.

性能

形式	Liquid
存放说明	Shipped at 4°C. Store at +4°C short term (1-2 weeks). Upon delivery aliquot. Store at -20°C or -80°C. Avoid freeze / thaw cycle.
存储溶液	Preservative: 0.02% Sodium Azide Constituents: 1% BSA, PBS, pH 7.4
纯度	Immunogen affinity purified
克隆	多克隆
同种型	IgG

应用

Our [Abpromise guarantee](#) covers the use of **ab63907** in the following tested applications.

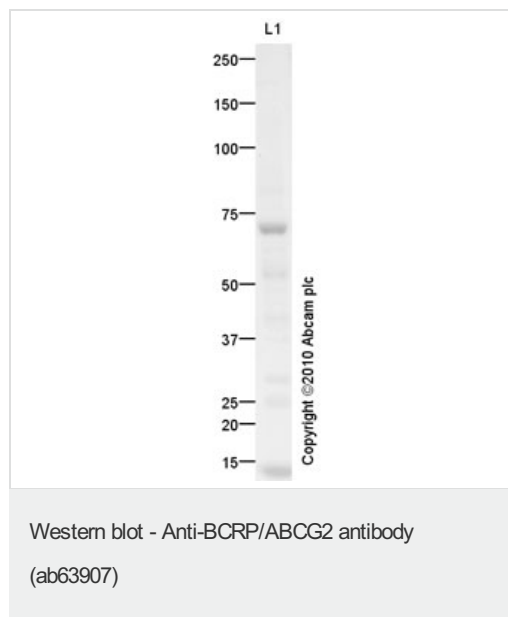
The application notes include recommended starting dilutions; optimal dilutions/concentrations should be determined by the end user.

应用	Ab评论	说明
WB	★★★★☆	Use a concentration of 1 µg/ml. Detects a band of approximately 72 kDa (predicted molecular weight: 72 kDa).

靶标

功能	Xenobiotic transporter that may play an important role in the exclusion of xenobiotics from the brain. May be involved in brain-to-blood efflux. Appears to play a major role in the multidrug resistance phenotype of several cancer cell lines. When overexpressed, the transfected cells become resistant to mitoxantrone, daunorubicin and doxorubicin, display diminished intracellular accumulation of daunorubicin, and manifest an ATP-dependent increase in the efflux of rhodamine 123.
组织特异性	Highly expressed in placenta. Low expression in small intestine, liver and colon.
序列相似性	Belongs to the ABC transporter superfamily. ABCG family. Eye pigment precursor importer (TC 3.A.1.204) subfamily. Contains 1 ABC transmembrane type-2 domain. Contains 1 ABC transporter domain.
翻译后修饰	Glycosylation-deficient ABCG2 is normally expressed and functional.
细胞定位	Cell membrane.

图片



Anti-BCRP/ABCG2 antibody (ab63907) at 1 µg/ml + Human placenta tissue lysate - total protein (ab29745) at 10 µg

Secondary

Secondary anti-rabbit antibody at 1/5000 dilution

Developed using the ECL technique.

Performed under reducing conditions.

Predicted band size: 72 kDa

Observed band size: 72 kDa

Additional bands at: 10 kDa, 55 kDa. We are unsure as to the identity of these extra bands.

Exposure time: 20 minutes

Please note: All products are "FOR RESEARCH USE ONLY AND ARE NOT INTENDED FOR DIAGNOSTIC OR THERAPEUTIC USE"

Our Abpromise to you: Quality guaranteed and expert technical support

- Replacement or refund for products not performing as stated on the datasheet
- Valid for 12 months from date of delivery

- Response to your inquiry within 24 hours
- We provide support in Chinese, English, French, German, Japanese and Spanish
- Extensive multi-media technical resources to help you
- We investigate all quality concerns to ensure our products perform to the highest standards

If the product does not perform as described on this datasheet, we will offer a refund or replacement. For full details of the Abpromise, please visit <https://www.abcam.cn/abpromise> or contact our technical team.

Terms and conditions

- Guarantee only valid for products bought direct from Abcam or one of our authorized distributors