


Product datasheet

Anti-Anterior Gradient 2 antibody ab58598

2 图像

概述

产品名称	Anti-Anterior Gradient 2抗体
描述	山羊多克隆抗体to Anterior Gradient 2
宿主	Goat
经测试应用	适用于: WB
种属反应性	与反应: Human 预测可用于: Mouse, Dog, Orangutan 
免疫原	Synthetic peptide corresponding to Human Anterior Gradient 2 aa 28-39 (internal sequence). Sequence: C-GAKKDTKDSRPK Run BLAST with Run BLAST with
阳性对照	WB: Human colon and human duodenum tissue lysates.

性能

形式	Liquid
存放说明	Shipped at 4°C. Upon delivery aliquot and store at -20°C or -80°C. Avoid repeated freeze / thaw cycles.
存储溶液	Preservative: 0.02% Sodium Azide Constituents: 0.5% BSA, Tris buffered saline, pH 7.3
纯度	Immunogen affinity purified
纯化说明	Purified from goat serum by ammonium sulphate precipitation followed by antigen affinity chromatography using the immunizing peptide.
克隆	多克隆
同种型	IgG

应用

Our [Abpromise guarantee](#) covers the use of **ab58598** in the following tested applications.

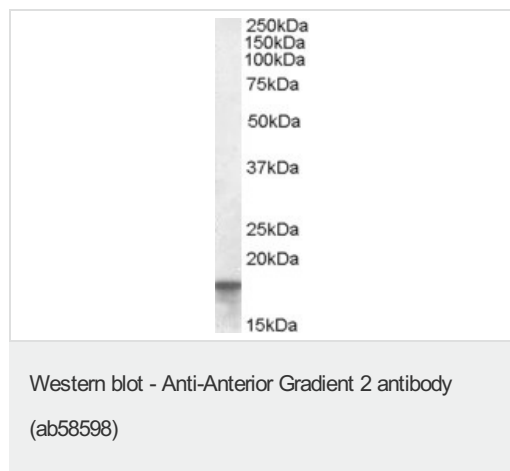
The application notes include recommended starting dilutions; optimal dilutions/concentrations should be determined by the end user.

应用	Ab评论	说明
WB		Use a concentration of 0.01 - 0.03 µg/ml. Detects a band of approximately 17 kDa (predicted molecular weight: 20 kDa).

靶标

功能	Required for MUC2 post-transcriptional synthesis and secretion. May play a role in the production of mucus by intestinal cells (By similarity). Proto-oncogene that may play a role in cell migration, cell differentiation and cell growth.
组织特异性	Expressed strongly in trachea, lung, stomach, colon, prostate and small intestine. Expressed weakly in pituitary gland, salivary gland, mammary gland, bladder, appendix, ovary, fetal lung, uterus, pancreas, kidney, fetal kidney, testis, placenta, thyroid gland and in estrogen receptor (ER)-positive breast cancer cell lines.
序列相似性	Belongs to the AGR family.
细胞定位	Secreted. Endoplasmic reticulum.

图片

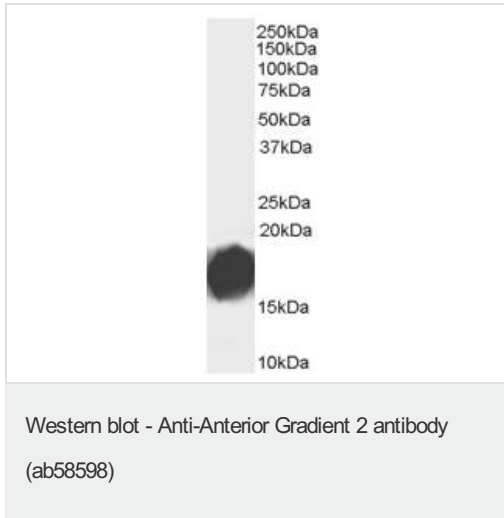


Anti-Anterior Gradient 2 antibody (ab58598)
at 0.01 µg/ml + Human colon tissue lysate (in RIPA buffer) at 35 µg

Developed using the ECL technique.

Predicted band size: 20 kDa

Incubated with the primary antibody for 1 hour.



Anti-Anterior Gradient 2 antibody (ab58598)
at 0.01 µg/ml + Human duodenum tissue
lysate (in RIPA buffer) at 35 µg

Developed using the ECL technique.

Predicted band size: 20 kDa

Observed band size: 17 kDa

Primary incubation was 1 hour.

Please note: All products are "FOR RESEARCH USE ONLY AND ARE NOT INTENDED FOR DIAGNOSTIC OR THERAPEUTIC USE"

Our Abpromise to you: Quality guaranteed and expert technical support

- Replacement or refund for products not performing as stated on the datasheet
- Valid for 12 months from date of delivery
- Response to your inquiry within 24 hours
- We provide support in Chinese, English, French, German, Japanese and Spanish
- Extensive multi-media technical resources to help you
- We investigate all quality concerns to ensure our products perform to the highest standards

If the product does not perform as described on this datasheet, we will offer a refund or replacement. For full details of the Abpromise, please visit <https://www.abcam.cn/abpromise> or contact our technical team.

Terms and conditions

- Guarantee only valid for products bought direct from Abcam or one of our authorized distributors