

Product datasheet

Anti-Annexin A11 antibody ab4121

1 图像

概述

产品名称	Anti-Annexin A11抗体
描述	山羊多克隆抗体to Annexin A11
宿主	Goat
特异性	This antibody is expected to recognise all three human isoforms.
经测试应用	适用于: WB
种属反应性	与反应: Human
免疫原	Synthetic peptide: YPGYPPPPGGYPP, corresponding to N terminal amino acids 3-15 of Annexin A11 from N Terminus of the protein sequence according to NP_001148; NP_665875; NP_665876 <a href="#">Run BLAST with ExPASy</a> <a href="#">Run BLAST with NCBI</a>
阳性对照	HeLa lysate.

性能

形式	Liquid
存放说明	Shipped at 4°C. Upon delivery aliquot and store at -20°C or -80°C. Avoid repeated freeze / thaw cycles.
存储溶液	Preservative: 0.02% Sodium Azide Constituents: 0.5% BSA, 5mg/ml Tris, pH 7.3
纯度	Immunogen affinity purified
纯化说明	Purified from goat serum by ammonium sulphate precipitation followed by antigen affinity chromatography using the immunizing peptide.
克隆	多克隆
同种型	IgG

应用

Our [Abpromise guarantee](#) covers the use of **ab4121** in the following tested applications.

The application notes include recommended starting dilutions; optimal dilutions/concentrations should be determined by the end user.

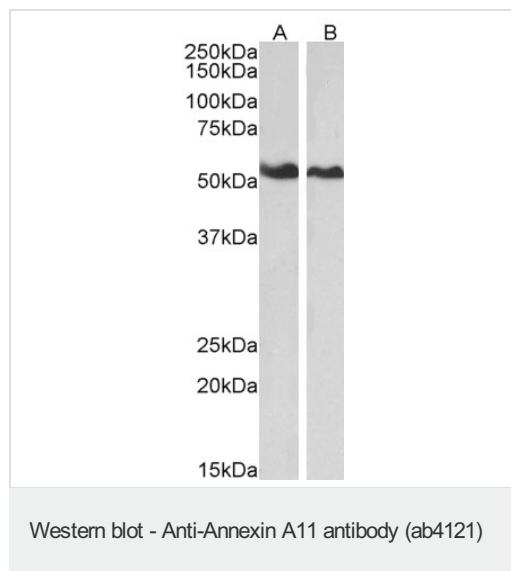
应用	Ab 评论	说明
----	-------	----

WB Use a concentration of 0.2 - 1 µg/ml. Detects a band of approximately 55 kDa (predicted molecular weight: 58 kDa). Can be blocked with [Human Annexin A11 peptide \(ab22983\)](#).  
Approx 55 kDa band seen in HeLa lysate (Predicted MW of approx. 58 kDa according to NP\_001148).

## 靶标

<b>功能</b>	Binds specifically to calyculin in a calcium-dependent manner (By similarity). Required for midbody formation and completion of the terminal phase of cytokinesis.
<b>序列相似性</b>	Belongs to the annexin family. Contains 4 annexin repeats.
<b>结构域</b>	A pair of annexin repeats may form one binding site for calcium and phospholipid.
<b>细胞定位</b>	Cytoplasm. Melanosome. Nucleus envelope. Nucleus > nucleoplasm. Cytoplasm > cytoskeleton > spindle. Found throughout the nucleoplasm at interphase and during mitosis concentrates around the mitotic apparatus (By similarity). Elevation of intracellular calcium causes relocalization from the nucleoplasm to the nuclear envelope, with little effect on the cytoplasmic pool. Localization to the nuclear envelope is cell-cycle dependent.

## 图片



**All lanes :** Anti-Annexin A11 antibody (ab4121) at 0.01 µg/ml

**Lane 1 :** HeLa lysates (in RIPA buffer)

**Lane 2 :** Jurkat lysates (in RIPA buffer)

Lysates/proteins at 35 µg per lane.

**Predicted band size:** 58 kDa

**Observed band size:** 54 kDa

Primary incubation was 1 hour.

Detected by chemiluminescence.

**Please note:** All products are "FOR RESEARCH USE ONLY AND ARE NOT INTENDED FOR DIAGNOSTIC OR THERAPEUTIC USE"

## **Our Abpromise to you: Quality guaranteed and expert technical support**

---

- Replacement or refund for products not performing as stated on the datasheet
- Valid for 12 months from date of delivery
- Response to your inquiry within 24 hours
  
- We provide support in Chinese, English, French, German, Japanese and Spanish
- Extensive multi-media technical resources to help you
- We investigate all quality concerns to ensure our products perform to the highest standards

If the product does not perform as described on this datasheet, we will offer a refund or replacement. For full details of the Abpromise, please visit <https://www.abcam.cn/abpromise> or contact our technical team.

## **Terms and conditions**

---

- Guarantee only valid for products bought direct from Abcam or one of our authorized distributors