

Product datasheet

Anti-APPBP1 antibody - Carboxyterminal end ab71592

2 图像

概述

产品名称	Anti-APPBP1抗体- Carboxyterminal end
描述	兔多克隆抗体to APPBP1 - Carboxyterminal end
宿主	Rabbit
经测试应用	适用于: IHC-P, WB, ELISA
种属反应性	与反应: Human
免疫原	Synthetic peptide corresponding to Human APPBP1 (C terminal) conjugated to keyhole limpet haemocyanin.
阳性对照	Formalin-fixed, paraffin-embedded human testis tissue and transfected/ non-transfected 293 cell lysates.

性能

形式	Liquid
存放说明	Shipped at 4°C. Upon delivery aliquot and store at -20°C or -80°C. Avoid repeated freeze / thaw cycles.
存储溶液	Preservative: 0.09% Sodium Azide Constituents: PBS
纯度	Ammonium Sulphate Precipitation
纯化说明	This antibody is prepared by Saturated Ammonium Sulfate (SAS) precipitation followed by dialysis against PBS.
克隆	多克隆
同种型	IgG

应用

Our [Abpromise guarantee](#) covers the use of **ab71592** in the following tested applications.

The application notes include recommended starting dilutions; optimal dilutions/concentrations should be determined by the end user.

应用	Ab评论	说明
IHC-P		1/10 - 1/50.

应用	Ab评论	说明
WB		1/50 - 1/100. Detects a band of approximately 60 kDa (predicted molecular weight: 60 kDa).
ELISA		1/1000.

靶标

功能

Regulatory subunit of the dimeric UBA3-NAE1 E1 enzyme. E1 activates NEDD8 by first adenylating its C-terminal glycine residue with ATP, thereafter linking this residue to the side chain of the catalytic cysteine, yielding a NEDD8-UBA3 thioester and free AMP. E1 finally transfers NEDD8 to the catalytic cysteine of UBE2M. Necessary for cell cycle progression through the S-M checkpoint. Overexpression of NAE1 causes apoptosis through deregulation of NEDD8 conjugation.

组织特异性

Ubiquitous in fetal tissues. Expressed throughout the adult brain.

通路

Protein modification; protein neddylation.

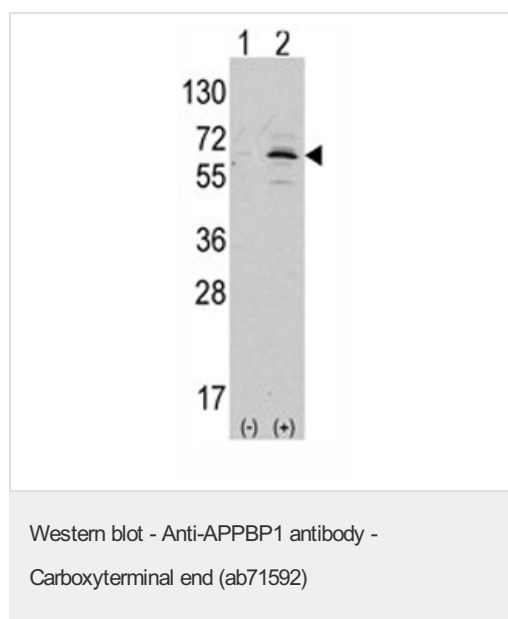
序列相似性

Belongs to the ubiquitin-activating E1 family. ULA1 subfamily.

细胞定位

Cell membrane. Colocalizes with APP in lipid rafts.

图片



All lanes : Anti-APPBP1 antibody - Carboxyterminal end (ab71592) at 1/50 dilution

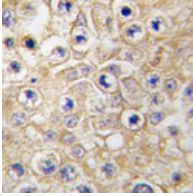
Lane 1 : Non-transfected 293 cell lysates

Lane 2 : APPBP1 transfected 293 cell lysates

Lysates/proteins at 2 µg per lane.

Predicted band size: 60 kDa

Observed band size: 60 kDa



Immunohistochemistry (Formalin/PFA-fixed paraffin-embedded sections) - Anti-APPBP1 antibody - Carboxyterminal end (ab71592)

Formalin-fixed and paraffin-embedded human testis tissue reacted with ab71592 at a 1:10 dilution, which was peroxidase-conjugated to the secondary antibody, followed by DAB staining.

Please note: All products are "FOR RESEARCH USE ONLY AND ARE NOT INTENDED FOR DIAGNOSTIC OR THERAPEUTIC USE"

Our Abpromise to you: Quality guaranteed and expert technical support

- Replacement or refund for products not performing as stated on the datasheet
- Valid for 12 months from date of delivery
- Response to your inquiry within 24 hours
- We provide support in Chinese, English, French, German, Japanese and Spanish
- Extensive multi-media technical resources to help you
- We investigate all quality concerns to ensure our products perform to the highest standards

If the product does not perform as described on this datasheet, we will offer a refund or replacement. For full details of the Abpromise, please visit <https://www.abcam.cn/abpromise> or contact our technical team.

Terms and conditions

- Guarantee only valid for products bought direct from Abcam or one of our authorized distributors