


Product datasheet

Anti-APAF1 antibody ab14228

1 图像

概述

产品名称	Anti-APAF1抗体
描述	鸡多克隆抗体to APAF1
宿主	Chicken
经测试应用	适用于: WB
种属反应性	与反应: Mouse, Human 预测可用于: Rat 
免疫原	Synthetic peptide: PEQAHSIIKECKGSPVVSLIGALLRDFPNRWEYYLKQLQNKQFKRIRKS SSYDYEALDEAMSISVEMLRREDIKDYTDLSI, corresponding to amino acids 307-388 of Human APAF1. <a href="#">Run BLAST with ExPASy</a> <a href="#">Run BLAST with NCBI</a>

性能

形式	Liquid
存放说明	Shipped at 4°C. Upon delivery aliquot and store at -20°C. Avoid freeze / thaw cycles.
存储溶液	Preservative: None Constituents: PBS
纯度	Immunogen affinity purified
克隆	多克隆
同种型	IgY

应用

Our [Abpromise guarantee](#) covers the use of **ab14228** in the following tested applications.

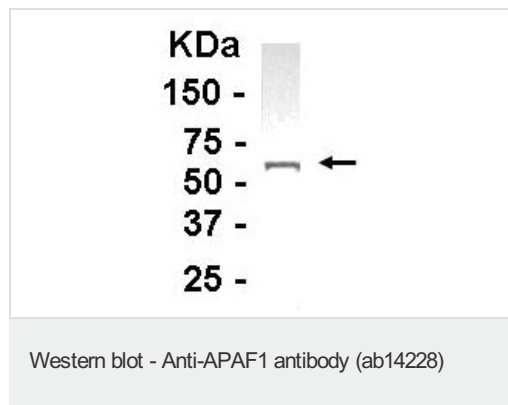
The application notes include recommended starting dilutions; optimal dilutions/concentrations should be determined by the end user.

应用	Ab评论	说明
WB		1/500. Predicted molecular weight: 139 kDa.

## 靶标

功能	Oligomeric Apaf-1 mediates the cytochrome c-dependent autocatalytic activation of pro-caspase-9 (Apaf-3), leading to the activation of caspase-3 and apoptosis. This activation requires ATP. Isoform 6 is less effective in inducing apoptosis.
组织特异性	Ubiquitous. Highest levels of expression in adult spleen and peripheral blood leukocytes, and in fetal brain, kidney and lung. Isoform 1 is expressed in heart, kidney and liver.
序列相似性	Contains 1 CARD domain. Contains 1 NB-ARC domain. Contains 13 WD repeats.
结构域	The CARD domain mediates interaction with APIP.
细胞定位	Cytoplasm.

## 图片



Western blot analysis of APAF1 with an E coli derived fusion protein as test antigen, using ab14228 diluted 1/2000.

Western blot analysis of APAF1 with an E coli-derived fusion protein as test antigen, using ab14228 diluted 1/2000.

**Please note:** All products are "FOR RESEARCH USE ONLY AND ARE NOT INTENDED FOR DIAGNOSTIC OR THERAPEUTIC USE"

## Our Abpromise to you: Quality guaranteed and expert technical support

- Replacement or refund for products not performing as stated on the datasheet
- Valid for 12 months from date of delivery
- Response to your inquiry within 24 hours
- We provide support in Chinese, English, French, German, Japanese and Spanish
- Extensive multi-media technical resources to help you
- We investigate all quality concerns to ensure our products perform to the highest standards

If the product does not perform as described on this datasheet, we will offer a refund or replacement. For full details of the Abpromise, please visit <https://www.abcam.cn/abpromise> or contact our technical team.

## Terms and conditions

- Guarantee only valid for products bought direct from Abcam or one of our authorized distributors