

Product datasheet

Anti-AFAP1L2 antibody ab106433

3 图像

概述

| | |
|-------|--|
| 产品名称 | Anti-AFAP1L2抗体 |
| 描述 | 兔多克隆抗体to AFAP1L2 |
| 宿主 | Rabbit |
| 经测试应用 | 适用于: ICC/IF, IHC-P, WB |
| 种属反应性 | 与反应: Mouse, Rat, Human |
| 免疫原 | A 15 amino acid synthetic peptide near the C terminus of Human AFAP1L2 (NP_001001936). |
| 阳性对照 | WB: Mouse liver tissue lysate IHC-P: Human liver tissue |

性能

| | |
|------|--|
| 形式 | Liquid |
| 存放说明 | Shipped at 4°C. Store at 4°C (stable for up to 12 months). |
| 存储溶液 | Preservative: 0.02% Sodium Azide Constituents: PBS |
| 纯度 | Immunogen affinity purified |
| 克隆 | 多克隆 |
| 同种型 | IgG |

应用

Our [Abpromise guarantee](#) covers the use of **ab106433** in the following tested applications.

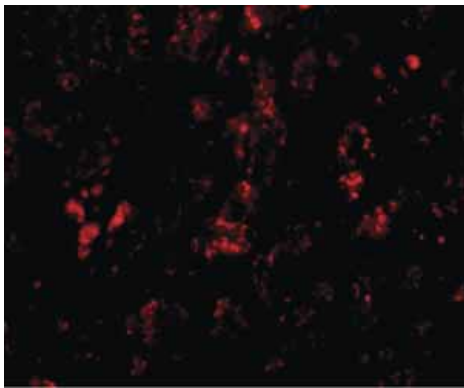
The application notes include recommended starting dilutions; optimal dilutions/concentrations should be determined by the end user.

| 应用 | Ab评论 | 说明 |
|--------|------|---|
| ICC/IF | | Use a concentration of 20 µg/ml. |
| IHC-P | | Use a concentration of 2.5 µg/ml. |
| WB | | Use a concentration of 1 - 2 µg/ml. Predicted molecular weight: 91 kDa. |

靶标

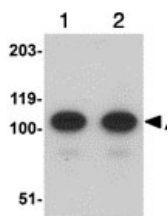
| | |
|--------------|--|
| 功能 | May play a role in a signaling cascade by enhancing the kinase activity of SRC. Contributes to SRC-regulated transcription activation. |
| 组织特异性 | Detected in spleen and thyroid, and at lower levels in kidney, brain, lung and pancreas. |
| 序列相似性 | Contains 2 PH domains. |
| 翻译后修饰 | Tyrosine phosphorylated (by SRC). |
| 细胞定位 | Cytoplasm. |

图片



Immunofluorescence of AFAP1L2 in Human liver tissue with ab106433 at 20 µg/mL.

Immunocytochemistry/ Immunofluorescence - Anti-AFAP1L2 antibody (ab106433)



Lane 1 : Anti-AFAP1L2 antibody (ab106433) at 1 µg/ml

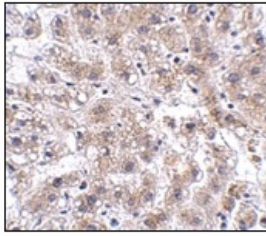
Lane 2 : Anti-AFAP1L2 antibody (ab106433) at 2 µg/ml

All lanes : Mouse liver tissue lysate

Lysates/proteins at 15 µg per lane.

Predicted band size: 91 kDa

Western blot - Anti-AFAP1L2 antibody (ab106433)



ab106433, at 2.5 µg/ml, staining AFAP1L2 in paraffin embedded Human liver tissue by Immunohistochemistry.

Immunohistochemistry (Formalin/PFA-fixed paraffin-embedded sections) - Anti-AFAP1L2 antibody (ab106433)

Please note: All products are "FOR RESEARCH USE ONLY AND ARE NOT INTENDED FOR DIAGNOSTIC OR THERAPEUTIC USE"

Our Abpromise to you: Quality guaranteed and expert technical support

- Replacement or refund for products not performing as stated on the datasheet
- Valid for 12 months from date of delivery
- Response to your inquiry within 24 hours
- We provide support in Chinese, English, French, German, Japanese and Spanish
- Extensive multi-media technical resources to help you
- We investigate all quality concerns to ensure our products perform to the highest standards

If the product does not perform as described on this datasheet, we will offer a refund or replacement. For full details of the Abpromise, please visit <https://www.abcam.cn/abpromise> or contact our technical team.

Terms and conditions

- Guarantee only valid for products bought direct from Abcam or one of our authorized distributors