

Rat monoclonal [SB77e] Anti-Mouse IgG1 H&L (PE) preadsorbed ab99605

1 图像

概述	
产品名称	大鼠单克隆抗体[SB77e]抗小鼠IgG1 H&L (PE)预吸附二抗
宿主	Rat
靶标种属	Mouse
特异性	ab99605 reacts with Mouse IgG1 as demonstrated by ELISA. Each batch of Rat monoclonal [SB77e] Anti-Mouse IgG1 H&L (Phycoerythrin) preadsorbed is tested to show minimal cross reactivity with IgM, IgA, and other subsets of IgG.
经测试应用	适用于: ELISA, Flow Cyt, ICC/IF
最小交叉反应	Goat, Human, Rabbit
偶联物	PE. Ex: 488nm, Em: 575nm

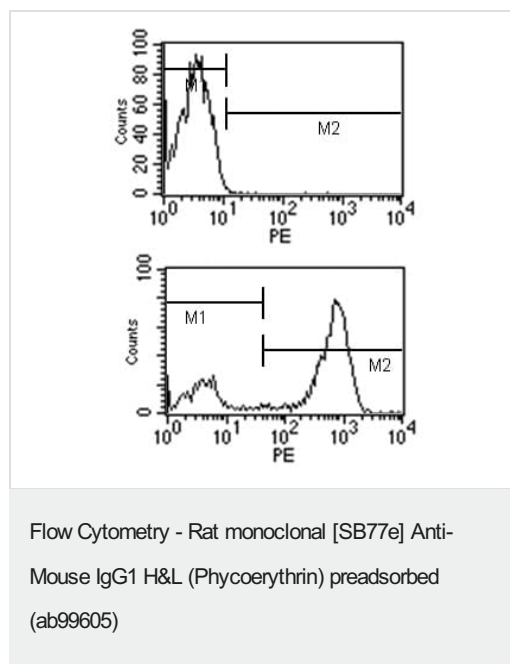
[more details](#)

性能	
形式	Liquid
存放说明	Shipped at 4°C. Store at +4°C. Store In the Dark.
存储溶液	pH: 7.3 Preservative: 0.1% Sodium azide Constituents: Sucrose, PBS
纯度	Affinity purified
克隆	单克隆
克隆编号	SB77e
同种型	IgG2b

应用	
The Abpromise guarantee	Abpromise™ 承诺保证使用ab99605于以下的经测试应用
“应用说明”部分 下显示的仅为推荐的起始稀释度;实际最佳的稀释度/浓度应由使用者检定。	

应用	Ab评论	说明
ELISA		Use at an assay dependent dilution.
Flow Cyt		Use at an assay dependent dilution.
ICC/IF		Use 0.1µg for 10 ⁶ cells.

图片



Top: (Negative control) ab99605 being used against Mouse IgG1 in human blood at 0.1 µg/10⁶ cells.

Bottom: ab99605 staining human blood incubated with mouse anti-human CD3 (IgG1 isotype) at 0.1 µg/10⁶ cells.

Please note: All products are "FOR RESEARCH USE ONLY. NOT FOR USE IN DIAGNOSTIC PROCEDURES"

Our Abpromise to you: Quality guaranteed and expert technical support

- Replacement or refund for products not performing as stated on the datasheet
- Valid for 12 months from date of delivery
- Response to your inquiry within 24 hours
- We provide support in Chinese, English, French, German, Japanese and Spanish
- Extensive multi-media technical resources to help you
- We investigate all quality concerns to ensure our products perform to the highest standards

If the product does not perform as described on this datasheet, we will offer a refund or replacement. For full details of the Abpromise, please visit <https://www.abcam.cn/abpromise> or contact our technical team.

Terms and conditions

- Guarantee only valid for products bought direct from Abcam or one of our authorized distributors