

Rabbit Anti-Rat IgG H&L (Alkaline Phosphatase) ab6735

1 图像

概述

产品名称	兔抗大鼠IgG H&L (Alkaline Phosphatase)
宿主	Rabbit
靶标种属	Rat
经测试应用	适用于: IHC-P, WB, ELISA, Immunomicroscopy, Dot blot, ICC/IF, IHC-Fr
免疫原	Rat IgG whole molecule
偶联物	Alkaline Phosphatase

性能

形式	Liquid
存放说明	Shipped at 4°C. Store at +4°C short term (1-2 weeks). Upon delivery aliquot. Store at -20°C or -80°C. Avoid freeze / thaw cycle.
存储溶液	Preservative: 0.01% Sodium azide Constituents: 0.87% Sodium chloride, 0.788% Tris HCl, 0.0095% Magnesium chloride, 0.001% Zinc chloride, 50% Glycerol (glycerin, glycerine), 1% BSA
纯度	Affinity purified
纯化说明	This product was prepared from monospecific antiserum by immunoaffinity chromatography using Rat IgG coupled to agarose beads.
共轭说明	Alkaline Phosphatase (Calf Intestine) (Molecular Weight 140,000 daltons)
克隆	多克隆
常规说明	Part of the AbExcel range.

应用

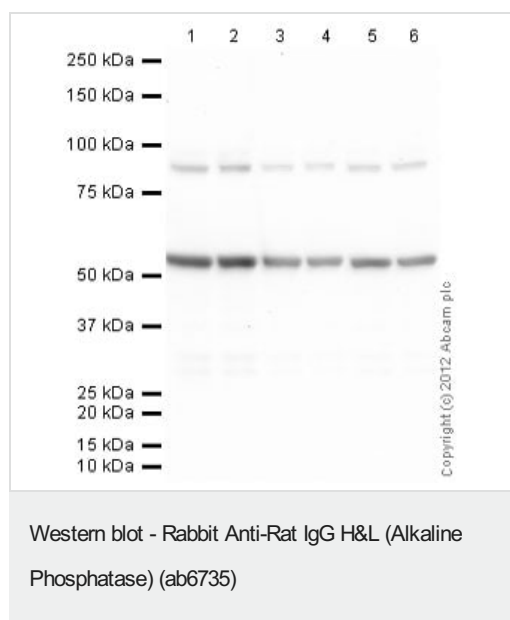
The Abpromise guarantee **Abpromise™**承诺保证使用ab6735于以下的经测试应用

“应用说明”部分 下显示的仅为推荐的起始稀释度;实际最佳的稀释度/浓度应由使用者检定。

应用	Ab评论	说明
IHC-P		Use at an assay dependent concentration.

应用	Ab评论	说明
WB		1/5000 - 1/50000.
ELISA		Use at an assay dependent dilution.
Immunomicroscopy		Use at an assay dependent concentration.
Dot blot		Use at an assay dependent concentration.
ICC/IF		1/200 - 1/1000.
IHC-Fr		Use at an assay dependent concentration.

图片



All lanes : Anti-Tubulin antibody [YL 1/2] - Loading Control (**ab6160**) at 1 µg/ml (Anti-Tubulin antibody [YL 1/2] - Loading Control)

All lanes : HeLa (Human epithelial carcinoma cell line) Whole Cell Lysate

Lysates/proteins at 20 µg per lane.

Secondary

Lanes 1-2 : Rabbit Anti-Rat IgG H&L (Alkaline Phosphatase) (ab6735) at 1/2000 dilution (Goat polyclonal Secondary Antibody to Rat IgG - H&L (HRP))

Lanes 3-4 : Rabbit Anti-Rat IgG H&L (Alkaline Phosphatase) (ab6735) at 1/10000 dilution (Goat polyclonal Secondary Antibody to Rat IgG - H&L (HRP))

Lanes 5-6 : Rabbit Anti-Rat IgG H&L (Alkaline Phosphatase) (ab6735) at 1/20000 dilution (Goat polyclonal Secondary Antibody to Rat IgG - H&L (HRP))

Developed using the ECL technique.

Performed under reducing conditions.

Please note: All products are "FOR RESEARCH USE ONLY. NOT FOR USE IN DIAGNOSTIC PROCEDURES"

Our Abpromise to you: Quality guaranteed and expert technical support

- Replacement or refund for products not performing as stated on the datasheet
- Valid for 12 months from date of delivery
- Response to your inquiry within 24 hours
- We provide support in Chinese, English, French, German, Japanese and Spanish
- Extensive multi-media technical resources to help you
- We investigate all quality concerns to ensure our products perform to the highest standards

If the product does not perform as described on this datasheet, we will offer a refund or replacement. For full details of the Abpromise, please visit <https://www.abcam.cn/abpromise> or contact our technical team.

Terms and conditions

- Guarantee only valid for products bought direct from Abcam or one of our authorized distributors