

Anti-mouse IgG for IP (HRP) ab131368

★★★★★ [3 Abreviews](#) [145 References](#) [1 图像](#)

概述

产品名称	抗小鼠IgG for IP (HRP)
宿主	Rat
靶标种属	Mouse
经测试应用	适用于: WB
偶联物	HRP

性能

形式	Liquid
存放说明	Shipped at 4°C. Store at +4°C.
存储溶液	Constituents: 0.16% Sodium phosphate, 0.88% Sodium chloride, 50% Glycerol, 0.1% BSA
纯度	Protein G purified
克隆	单克隆
克隆编号	eB144
同种型	IgG
常规说明	Number of blots: At least 20 blots , based on a 1 µl/ml dilution and 5 ml diluted antibody per blot.

Important protocol notes:

1. The anti-mouse IgG for IP secondary antibody (HRP) detects mouse IgG antibodies (subtypes: IgG1, IgG2a, IgG2b, IgG3).
2. The anti-mouse IgG for IP secondary antibody (HRP) preferentially detects the non-reduced form of mouse IgG (IgG1, IgG2a, IgG2b, IgG3) over the reduced, SDS-denatured forms.
3. IP sample should be completely reduced/denatured before loaded onto a western blot.
4. Milk should be used as the blocking protein for the immunoblot.

Western blot and IP resources:

a) [Western blot a beginner's guide](#)

- b) **IP protocol**
c) **IP troubleshooting tips**

应用

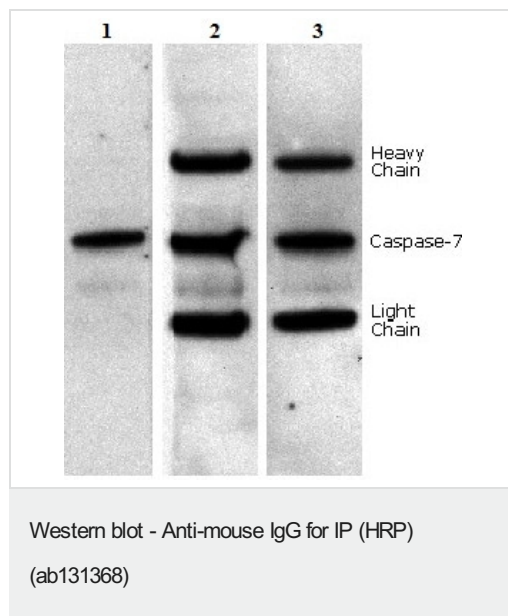
The Abpromise guarantee

Abpromise™承诺保证使用ab131368于以下的经测试应用

“应用说明”部分 下显示的仅为推荐的起始稀释度;实际最佳的稀释度/浓度应由使用者检定。

应用	Ab评论	说明
WB	★★★★★ (2)	1/1000 - 1/10000. The optimal dilution will depend on the sensitivity of the HRP substrate.

图片



IP sample preparation: Caspase 7 was immunoprecipitated from 0.5 ml of 1×10^7 Jurkat (Human T cell leukemia cell line from peripheral blood) cells/ml with 5 μ g mouse anti-human Caspase 7.

WB conditions: Precipitate from 1×10^6 cells was subjected to electrophoresis, transferred to an PVDF membrane, and immunoblotted with an anti-Caspase 7 antibody.

Detection:

Lane 1: Detection with anti-mouse IgG for IP secondary antibody (HRP) (ab131368)

Lane 2: Detection with an HRP-conjugated anti-mouse IgG H&L secondary antibody

Lane 3: Lane 1 was re-immunoblotted using an HRP-conjugated anti-mouse IgG H&L secondary antibody. The heavy and light-chains can now be seen, confirming that although the immunoprecipitating heavy and light-chains are present, ab131368 detects only native antibody and not denatured heavy and light-chains.

Please note the detection of the heavy and light-chains of the immunoprecipitating antibody in Lane 2 but not in Lane 1.

Please note: All products are "FOR RESEARCH USE ONLY. NOT FOR USE IN DIAGNOSTIC PROCEDURES"

Our Abpromise to you: Quality guaranteed and expert technical support

- Replacement or refund for products not performing as stated on the datasheet
- Valid for 12 months from date of delivery

- Response to your inquiry within 24 hours
- We provide support in Chinese, English, French, German, Japanese and Spanish
- Extensive multi-media technical resources to help you
- We investigate all quality concerns to ensure our products perform to the highest standards

If the product does not perform as described on this datasheet, we will offer a refund or replacement. For full details of the Abpromise, please visit <https://www.abcam.cn/abpromise> or contact our technical team.

Terms and conditions

- Guarantee only valid for products bought direct from Abcam or one of our authorized distributors