

Goat Anti-Rabbit IgG H&L (HRP) ab97051

★★★★★ 10 Abreviews 1055 References 7 图像

概述

产品名称	山羊抗兔IgG H&L (HRP)
宿主	Goat
靶标种属	Rabbit
特异性	By immunoelectrophoresis and ELISA this antibody reacts specifically with Rabbit IgG and with light chains common to other Rabbit immunoglobulins. No antibody was detected against non-immunoglobulin serum proteins.
经测试应用	适用于: ICC, IHC-P, ELISA, WB
偶联物	HRP

性能

形式	Liquid
存放说明	Shipped at 4°C. Store at +4°C.
存储溶液	pH: 6.80 Constituents: 0.2% BSA, PBS, 0.05% CMIT/MIT based preservative
纯度	Immunogen affinity purified
纯化说明	This antibody was isolated by affinity chromatography using antigen coupled to agarose beads and conjugated to Horse Radish Peroxidase (HRP).
共轭说明	Molar enzyme/ antibody protein ratio is 4:1
克隆	多克隆
同种型	IgG
常规说明	Part of the <b>AbExcel</b> range.

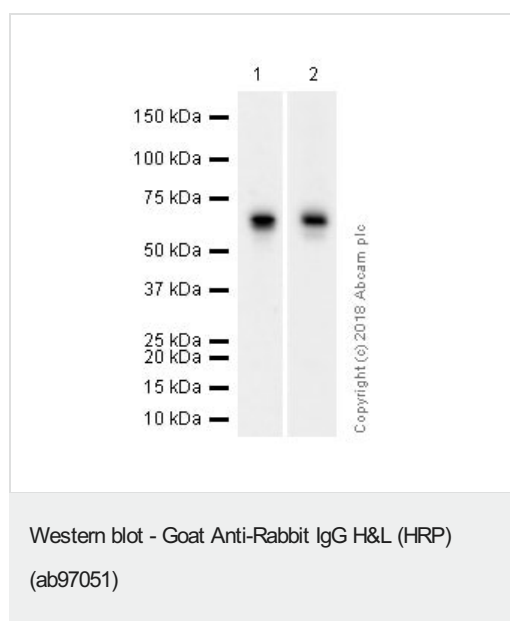
应用

The Abpromise guarantee      **Abpromise™**承诺保证使用ab97051于以下的经测试应用

“应用说明”部分 下显示的仅为推荐的起始稀释度;实际最佳的稀释度/浓度应由使用者检定。

应用	Ab评论	说明
ICC		Use at an assay dependent concentration.
IHC-P		1/200 - 1/5000.
ELISA		1/10000 - 1/100000.
WB	★★★★★ (10)	1/2000 - 1/20000. Colorimetric: 1/5000 - 1/30000; Chemiluminescent: 1/10000 - 1/50000

## 图片



**All lanes** : Anti-Estrogen Receptor alpha antibody [E115] - ChIP  
Grade ([ab32063](#)) at 1/1000 dilution

**Lane 1** : Rat pituitary whole tissue lysate

**Lane 2** : Mouse pituitary whole tissue lysate

Lysates/proteins at 20 µg per lane.

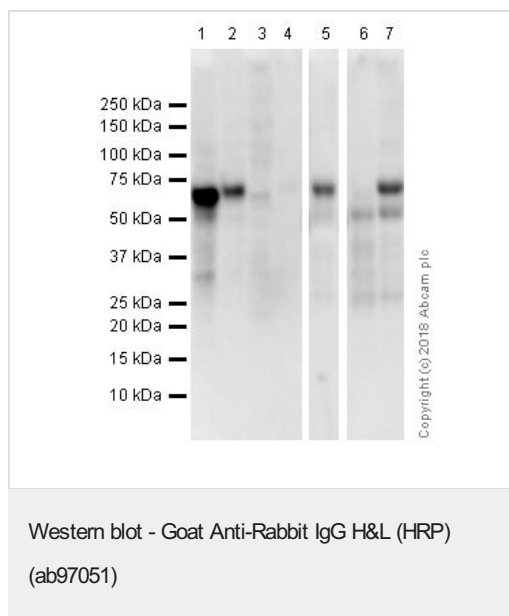
### Secondary

**All lanes** : Goat Anti-Rabbit IgG H&L (HRP) (ab97051) at 1/20000 dilution

**Exposure time**: 1st lane: 85 seconds

2nd lane: 32 seconds

Blocking and diluting buffer: 5% NFDM/TBST



**All lanes :** Anti-Estrogen Receptor alpha antibody [E115] - ChIP Grade (**ab32063**) at 1/1000 dilution

**Lane 1 :** MCF7 (Human breast adenocarcinoma epithelial cell).

Whole cell lysates

**Lane 2 :** T-47D (human mammary gland ductal carcinoma epithelial cell). Whole cell lysates

**Lane 3 :** MDA-MB231 (Human breast adenocarcinoma epithelial cell) Whole cell lysates (Negative control)

**Lane 4 :** HepG2 (Human hepatocellular carcinoma epithelial cell) Whole cell lysates (Negative control)

**Lane 5 :** Human uterus whole tissue lysate

**Lane 6 :** Human ovary whole tissue lysate

**Lane 7 :** Human ovary cancer whole tissue lysate

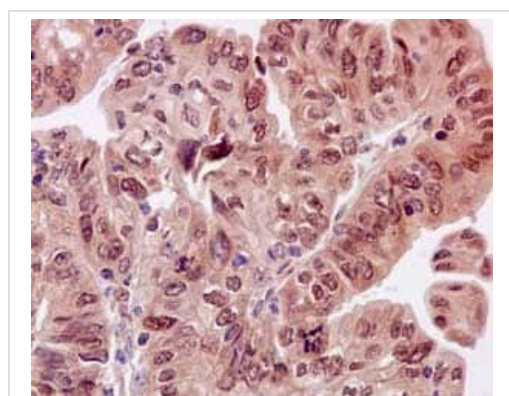
Lysates/proteins at 20 µg per lane.

## Secondary

**All lanes :** Goat Anti-Rabbit IgG H&L (HRP) (ab97051) at 1/20000 dilution

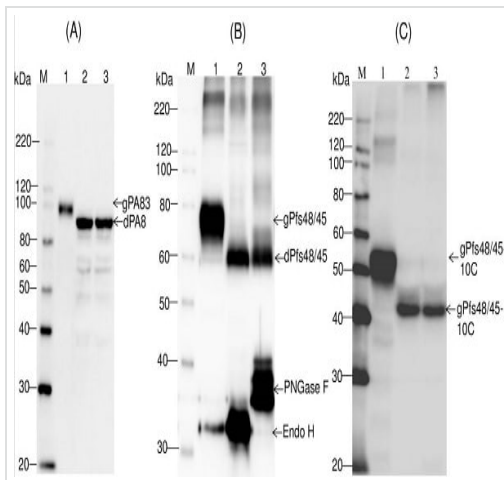
**Exposure time:** 50 seconds

Blocking and diluting buffer: 5% NFDM/TBST.



Immunohistochemical staining of paraffin embedded human endometrial carcinoma with purified **ab32063** at a working dilution of 1 in 200. The secondary antibody used is ab97051, a HRP goat anti-rabbit IgG (H+L), at 1/500. The sample is counter-stained with hematoxylin. Antigen retrieval was performed using Tris-EDTA buffer, pH 9.0.

Immunohistochemistry (Formalin/PFA-fixed paraffin-embedded sections) - Goat Anti-Rabbit IgG H&L (HRP) (ab97051)



Western blot - Goat Anti-Rabbit IgG H&L (HRP) (ab97051)

Mamedov et al PLoS One. 2017 Aug 21;12(8):e0183589. doi: 10.1371/journal.pone.0183589. eCollection 2017. Fig 4. Reproduced under the Creative Commons license <http://creativecommons.org/licenses/by/4.0/>

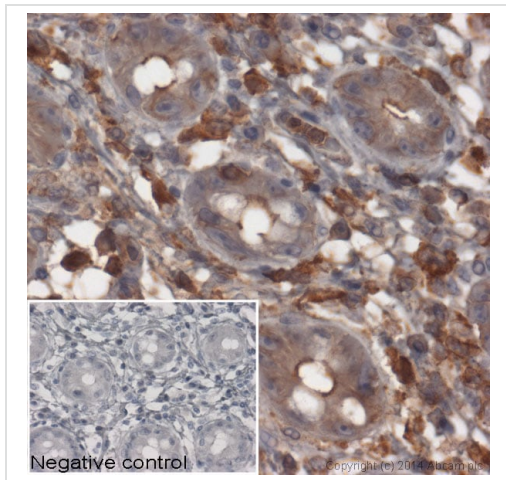
# **Western blot analysis of co-expression *Bacillus anthracis* PA83 (A), Pfs48/45 (B) and Pfs48/45-10C with bacterial Endo H or PNGase F in *N. benthamiana* plants.**

(A) Western blot analysis of co-expression of PA83. Lanes: 1- *N. benthamiana* plant was infiltrated with pBI-PA83 construct, for the production of glycosylated PA83, 2,3- *N. benthamiana* plants were infiltrated with combinations of the pBI-Endo H/pBI-PA83 or pBI-PNGase F/pBI-PA83 constructs, for the production of Endo H (2) or PNGase F (3) deglycosylated PA83 proteins.

(B) Western blot analysis of co-expression of Pfs48/45. Lanes: 1- *N. benthamiana* plant was infiltrated with pEAQ-Pfs48/45 construct for the production of glycosylated Pfs48/45; 2,3- *N. benthamiana* plants were infiltrated with combinations of the pBI-Endo H/pEAQ-Pfs48/45 or pBI-PNGase F/pEAQ-Pfs48/45 constructs for the production of Endo H (2) and PNGase F (3) deglycosylated Pfs48/45 proteins.

(C) Western blot analysis of co-expression of Pfs48/45-10C. Lanes: 1- *N. benthamiana* plant was infiltrated with pEAQ-Pfs48/45-10C construct for the production of glycosylated Pfs48/45-10C; 2,3- *N. benthamiana* plants were infiltrated with combinations of the pBI-Endo H/pEAQ-Pfs48/45 or pBI-PNGase F/pEAQ-Pfs48/45 constructs for the production of Endo H (2) and PNGase F (3) deglycosylated Pfs48/45-10C proteins. gPA83- glycosylated PA83; dPA83- deglycosylated PA83; gPfs48/45: glycosylated Pfs48/45; dPfs48/45: deglycosylated Pfs48/45; gPfs48/45-10C: glycosylated Pfs48/45-10C; dPfs48/45-10C: deglycosylated Pfs48/45-10C.

M: MagicMark XP Western Protein Standard. PA83 proteins were detected using the anti-*Bacillus anthracis* protective antigen antibody BAP0101 (Cat. No. **ab1988**, Abcam); Pfs48/45, Endo H or PNGase F proteins were detected using the anti-FLAG antibody. Pfs48/45-10C protein was detected using the purified anti-His Tag antibody.



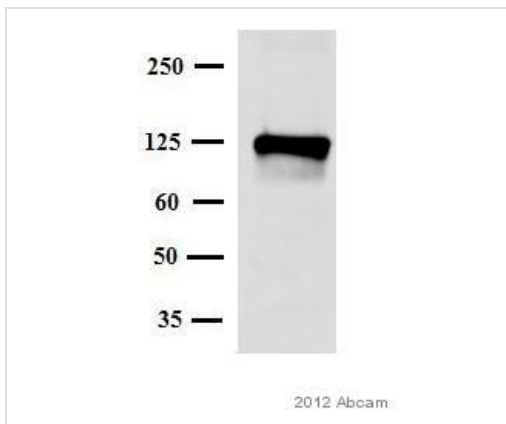
Immunohistochemistry (Formalin/PFA-fixed paraffin-embedded sections) - Goat Anti-Rabbit IgG H&L (HRP) (ab97051)

IHC image of beta Actin staining in normal human colon, formalin-fixed and paraffin-embedded tissue\*.

The section was pre-treated using pressure cooker heat mediated antigen retrieval with sodium citrate buffer (pH 6) for 30mins. The section was incubated with **ab8227**, 3 µg/ml overnight at +4°C. An HRP-conjugated secondary (ab97051, 1/2000 dilution) was used for 1hr at room temperature. The section was counterstained with hematoxylin and mounted with DPX.

The inset **negative control** image is secondary-only at 1/500 dilution.

\*Tissue obtained from the Human Research Tissue Bank, supported by the NIHR Cambridge Biomedical Research Centre



Western blot - Goat Anti-Rabbit IgG H&L (HRP) (ab97051)

This image is courtesy of an anonymous Abreview.

Anti-LAMP2 antibody (**ab37024**) at 1/1000 dilution + Mouse brain whole tissue lysate at 30 µg

### Secondary

Goat Anti-Rabbit IgG H&L (HRP) (ab97051) at 1/5000 dilution

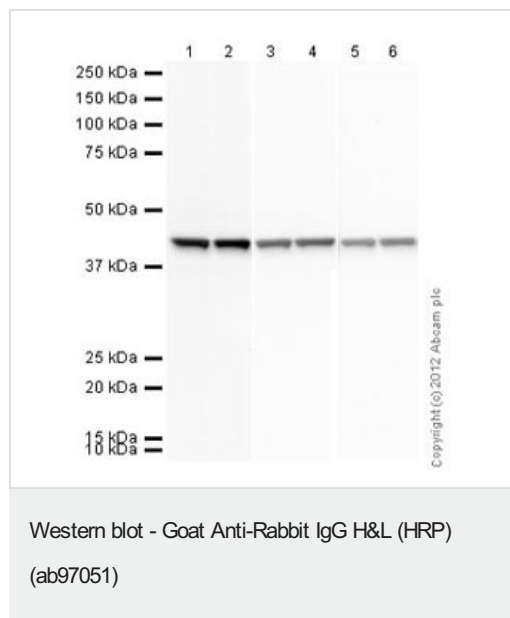
Developed using the ECL technique.

Performed under reducing conditions.

**Exposure time:** 1 minute

10 % gel. Blocked with 5% BSA for 2 hours at 25°C.

Incubated with the primary antibody for 1 hour in TBS-tween at 25°C.



**All lanes :** Anti-beta Actin antibody ([ab8227](#)) at 1 µg/ml

**All lanes :** HeLa (Human epithelial carcinoma cell line) Whole Cell Lysate

Lysates/proteins at 10 µg per lane.

#### Secondary

**Lanes 1-2 :** Rabbit polyclonal to GNAT2 ([ab97501](#)) at 1/2000 dilution

**Lanes 3-4 :** Goat Anti-Rabbit IgG H&L (HRP) ([ab97051](#)) at 1/10000 dilution

**Lanes 5-6 :** Goat Anti-Rabbit IgG H&L (HRP) ([ab97051](#)) at 1/20000 dilution

Developed using the ECL technique.

Performed under reducing conditions.

**Exposure time:** 10 seconds

**Please note:** All products are "FOR RESEARCH USE ONLY. NOT FOR USE IN DIAGNOSTIC PROCEDURES"

#### Our Abpromise to you: Quality guaranteed and expert technical support

- Replacement or refund for products not performing as stated on the datasheet
- Valid for 12 months from date of delivery
- Response to your inquiry within 24 hours
- We provide support in Chinese, English, French, German, Japanese and Spanish
- Extensive multi-media technical resources to help you
- We investigate all quality concerns to ensure our products perform to the highest standards

If the product does not perform as described on this datasheet, we will offer a refund or replacement. For full details of the Abpromise, please visit <https://www.abcam.cn/abpromise> or contact our technical team.

#### Terms and conditions

- Guarantee only valid for products bought direct from Abcam or one of our authorized distributors