

Goat Anti-Rabbit IgG H&L (FITC) ab97050

54 References 6 图像

概述	
产品名称	山羊抗兔IgG H&L (FITC)
宿主	Goat
靶标种属	Rabbit
特异性	By immunoelectrophoresis and ELISA this antibody reacts specifically with Rabbit IgG and with light chains common to other Rabbit immunoglobulins. No antibody was detected against non-immunoglobulin serum proteins.
经测试应用	适用于: IHC-P, ICC/IF, Flow Cyt
免疫原	Full length protein. Rabbit IgG (containing the usual heavy and light chain)
偶联物	FITC. Ex: 493nm, Em: 528nm
性能	
形式	Liquid
存放说明	Shipped at 4°C. Store at +4°C.
存储溶液	pH: 6.8 Preservative: 0.09% Sodium azide Constituents: 0.2% BSA, PBS
纯度	Immunogen affinity purified
纯化说明	This antibody was isolated by affinity chromatography using antigen coupled to agarose beads and conjugated to FITC.
共轭说明	F/P ratio is 4.85
克隆	多克隆
同种型	IgG
应用	

The Abpromise guarantee **Abpromise™**承诺保证使用ab97050于以下的经测试应用

“应用说明”部分 下显示的仅为推荐的起始稀释度;实际最佳的稀释度/浓度应由使用者检定。

应用	Ab评论	说明
IHC-P		1/50 - 1/500.
ICC/IF		1/50 - 1/500.
Flow Cyt		1/50 - 1/200.

图片

Induced neuronal differentiation

Induced group NSE positive

Control

Control NSE negative

Immunocytochemistry/ Immunofluorescence - Goat Anti-Rabbit IgG H&L (FITC) (ab97050)

Ren Y et al. Potential of adipose-derived mesenchymal stem cells and skeletal muscle-derived satellite cells for somatic cell nuclear transfer mediated transgenesis in Arbas Cashmere goats. PLoS One 9:e93583 (2014).

Immunocytochemical/immunofluorescent analysis of 4% paraformaldehyde-fixed Triton X-100 permeabilized Goat skeletal muscle-derived satellite cells stained for NSE using [ab53025](#).

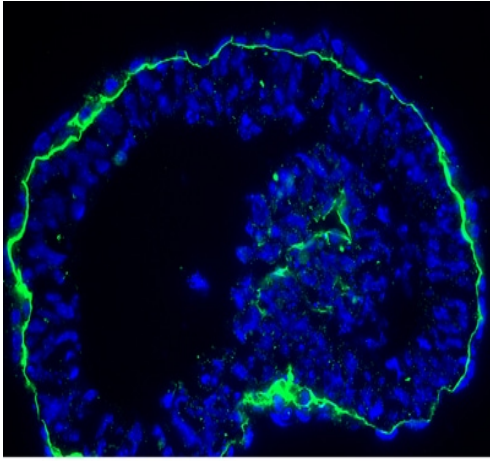
After washing in PBS, the cells were incubated with Goat Anti-Rabbit IgG H&L (FITC) (ab97050) (Green).

WM-266-4

Flow Cytometry - Goat Anti-Rabbit IgG H&L (FITC) (ab97050)

This image is courtesy of an anonymous Abreview.

[ab84235](#) staining melanoma inhibitory activity in a human melanoma cell line by Flow Cytometry. Cells were harvested with EDTA and washed in PBS. Cells were pemeabilized with saponine. The sample was incubated with the primary antibody (1/100 in PBS) for 15 minutes at 20°C. A FITC-conjugated goat anti-rabbit IgG H&L (ab97050) (1/100) was used as the secondary antibody.



Immunohistochemistry (Frozen sections) - Goat

Anti-Rabbit IgG H&L (FITC) (ab97050)

Courtesy of Dr. Shaohua Li, UMDNJ-Robert Wood Johnson Medical School

Sample: mouse embryonic stem cell-differentiated embryoid bodies (EBs)

Preparation:

Fix in 3% PFA in PBS for 30 min at RT

Incubate in 7.5% sucrose-PBS for 3h at RT

Incubate in 15% sucrose-PBS at 4 degree Celsius overnight

Embed the EBs in tissue-Tek OCT compound

Cut frozen sections to 4-20 μ m thickness

Primary antibodies:

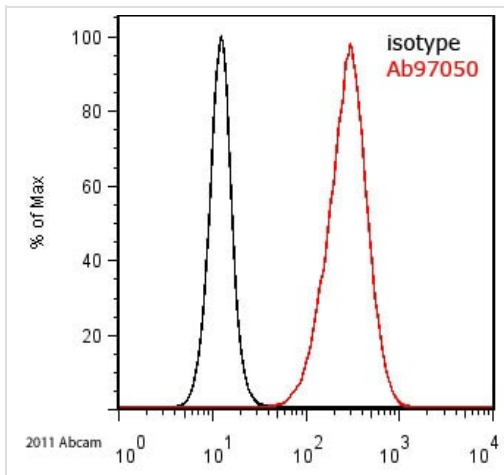
Mouse anti-Ki67, 1:100

Rabbit anti-laminin alpha 1 (basement marker)

Secondary antibodies:

Goat polyclonal Secondary Antibody to Mouse IgG - H&L (AMCA) (**ab47052**), 1:100

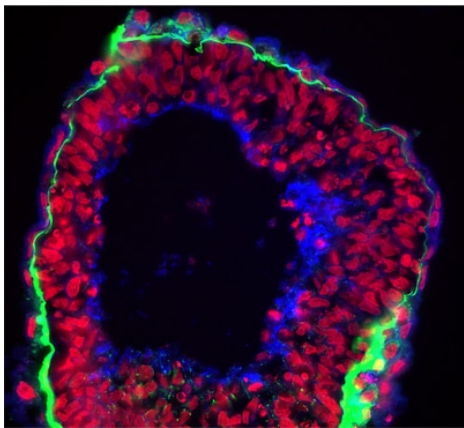
Goat polyclonal Secondary Antibody to Rabbit IgG - H&L (FITC) (ab97050), 1:100



Flow Cytometry - Goat Anti-Rabbit IgG H&L (FITC)
(ab97050)

The FACS staining was performed on THP-1 cell lines with Rabbit polyclonal to CCR2 ([ab21667](#)) at a 1/100 dilution for 30 min at 4°C. The secondary antibody was ab97050 used at 1/100 for 20 min at 4°C. The buffer used was PBS/BSA (0.5%)/Azide (0.05%). No fixation or permeabilization was performed and gating was done on alive cells.

This image is courtesy of an anonymous Abreview



Immunohistochemistry (Frozen sections) - Goat
Anti-Rabbit IgG H&L (FITC) (ab97050)

Courtesy of Dr. Shaohua Li, UMDNJ-Robert Wood
Johnson Medical School

Sample: mouse embryonic stem cell-differentiated embryoid
bodies (EBs)

Preparation:

Fix in 3% PFA in PBS for 30 min at RT

Incubate in 7.5% sucrose-PBS for 3h at RT

Incubate in 15% sucrose-PBS at 4° overnight

Embed the EBs in tissue-Tek OCT compound

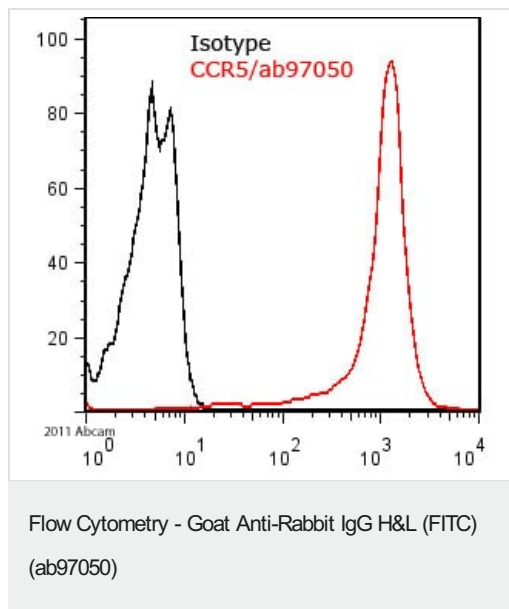
Cut frozen sections to 4-20 µm thickness

Primary antibody: Rabbit anti-laminin alpha 1, 1:400

Secondary antibody: Goat polyclonal Secondary Antibody to Rabbit
IgG - H&L (FITC) (ab97050)

F-actin was stained with CytoPainter F-actin staining kit (blue)
([ab112124](#)), 1:1000

Nuclei were counterstained with DRAQ7™ ([ab109202](#)),
1:1000



The FACS staining was performed on HEK cells expressing human CCR5 with PBS/BSA (0.5%)/Azide (0.05%) as FACS buffer. We used a primary polyclonal rabbit antibody against CCR5 at a 1/100 dilution, incubated for 1 hour at 4°C. The secondary antibody was ab97050 used at a concentration of 1/100 for 30 min at 4°C. No fixation or permeabilization was performed and gating was done on alive cells.

This image is courtesy of an anonymous Abreview

Please note: All products are "FOR RESEARCH USE ONLY. NOT FOR USE IN DIAGNOSTIC PROCEDURES"

Our Abpromise to you: Quality guaranteed and expert technical support

- Replacement or refund for products not performing as stated on the datasheet
- Valid for 12 months from date of delivery
- Response to your inquiry within 24 hours
- We provide support in Chinese, English, French, German, Japanese and Spanish
- Extensive multi-media technical resources to help you
- We investigate all quality concerns to ensure our products perform to the highest standards

If the product does not perform as described on this datasheet, we will offer a refund or replacement. For full details of the Abpromise, please visit <https://www.abcam.cn/abpromise> or contact our technical team.

Terms and conditions

- Guarantee only valid for products bought direct from Abcam or one of our authorized distributors