

Goat Anti-Rabbit IgG H&L (Cy5 ®) preadsorbed ab97077

34 References 3 图像

概述	
产品名称	山羊抗兔IgG H&L (Cy5 ®)预吸附二抗
宿主	Goat
靶标种属	Rabbit
特异性	By immunoelectrophoresis and ELISA this antibody reacts specifically with Rabbit IgG and with light chains common to other Rabbit immunoglobulins. No antibody was detected against non immunoglobulin serum proteins. Reduced cross-reactivity to bovine, chicken, goat, horse, human, mouse, pig and rat IgG was detected.
经测试应用	适用于: WB, ICC/IF, Flow Cyt, IHC-P
最小交叉反应	Chicken, Cow, Horse, Human, Mouse, Pig, Rat
偶联物	Cy5 ®. Ex: 650nm, Em: 667nm

[more details](#)

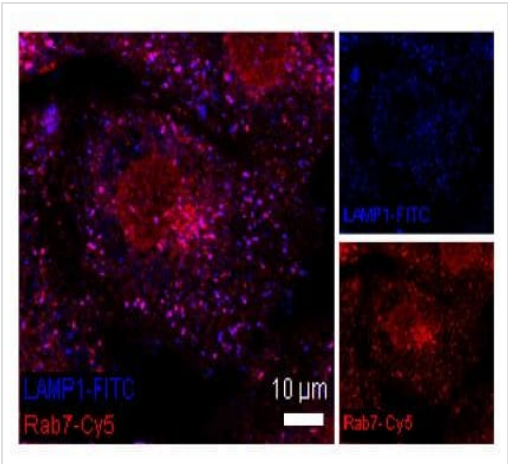
性能	
形式	Liquid
存放说明	Shipped at 4°C. Store at +4°C.
存储溶液	pH: 6.8 Preservative: 0.09% Sodium azide Constituents: 0.2% BSA, PBS
纯度	Immunogen affinity purified
纯化说明	Antiserum was cross absorbed using bovine, chicken, horse, human, mouse, pig and rat immunosorbents to remove cross reactive antibodies. This antibody was isolated by affinity chromatography using antigen coupled to agarose beads and conjugated to Cy5 ®.
克隆	多克隆
同种型	IgG

应用	
The Abpromise guarantee	<b><u>Abpromise™</u></b> 承诺保证使用ab97077于以下的经测试应用

“应用说明”部分 下显示的仅为推荐的起始稀释度;实际最佳的稀释度/浓度应由使用者检定。

应用	Ab评论	说明
WB		1/1000 - 1/5000. Predicted molecular weight: 36 kDa.
ICC/IF		1/50 - 1/500.
Flow Cyt		1/100 - 1/1000.
IHC-P		1/50 - 1/500.

图片

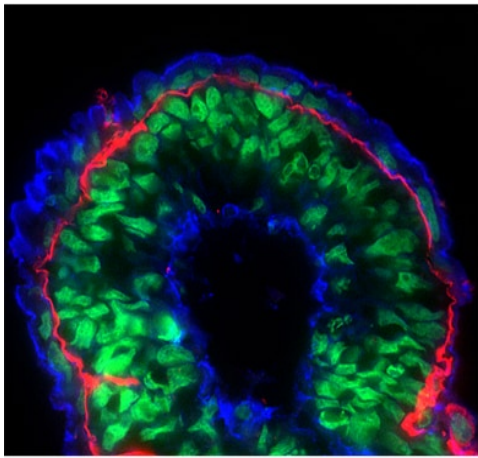


**Rab7 and LAMP1 are highly colocalized in BS-C-1 cells and in HeLa cells.**

Rab7 was detected with an Rabbit anti-Rab7 antibody, followed by ab97077 at 1/500 dilution in ICC/IF analysis of HeLa cells.

(From Figure S1 of Humphries et al)

Immunocytochemistry/ Immunofluorescence - Goat  
Anti-Rabbit IgG H&L (Cy5 ®) preadsorbed (ab97077)  
Humphries, W.H. 4th et al PLoS One.  
2011;6(10):e26626. doi:  
10.1371/journal.pone.0026626. Epub 2011 Oct 24  
Reproduced under the Creative Commons license  
<http://creativecommons.org/licenses/by/4.0/>



Immunohistochemistry (Frozen sections) - Goat  
Anti-Rabbit IgG H&L (Cy5®) preadsorbed (ab97077)  
Courtesy of Dr. Shaohua Li, UMDNJ-Robert Wood Johnson Medical School

Sample: mouse embryonic stem cell-differentiated embryoid bodies (EBs)

Preparation:

Fix in 3% PFA in PBS for 30 min at RT

Incubate in 7.5% sucrose-PBS for 3h at RT

Incubate in 15% sucrose-PBS at 4 degree Celsius overnight

Embed the EBs in tissue-Tek OCT compound

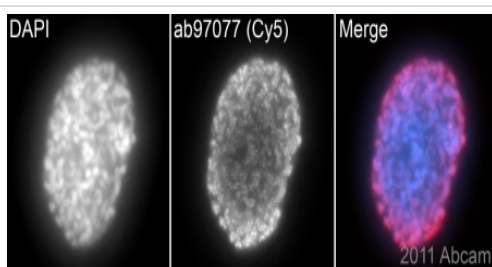
Cut frozen sections to 4-20 µm thickness

Primary antibody: Rabbit anti-laminin alpha 1, 1:400

Secondary antibody: Goat polyclonal Secondary Antibody to Rabbit IgG - H&L (Cy5®) (ab97077), 1:100

F-actin was stained with CytoPainter F-actin staining kit (blue) (**ab112124**), 1:100

Nuclei were counterstained with SYTO 16



Immunocytochemistry/ Immunofluorescence - Goat  
Anti-Rabbit IgG H&L (Cy5®) preadsorbed (ab97077)  
Image courtesy of Dr. Kirk McManus, Univ. of Manitoba/Cancer Care MCB, Canada

ab97077 (1/200) detecting **ab5176** in asynchronous HeLa cells (red). Cells were fixed in paraformaldehyde, permeabilised in 0.5% Triton X-100/PBS and counterstained with DAPI in order to highlight the nucleus (blue); **ab5176**, a rabbit polyclonal to Histone H3 (phospho S10), was used at 1/4000 dilution.

**Please note:** All products are "FOR RESEARCH USE ONLY. NOT FOR USE IN DIAGNOSTIC PROCEDURES"

### Our Abpromise to you: Quality guaranteed and expert technical support

- Replacement or refund for products not performing as stated on the datasheet
- Valid for 12 months from date of delivery
- Response to your inquiry within 24 hours
- We provide support in Chinese, English, French, German, Japanese and Spanish
- Extensive multi-media technical resources to help you
- We investigate all quality concerns to ensure our products perform to the highest standards

If the product does not perform as described on this datasheet, we will offer a refund or replacement. For full details of the Abpromise, please visit <https://www.abcam.cn/abpromise> or contact our technical team.

#### **Terms and conditions**

---

- Guarantee only valid for products bought direct from Abcam or one of our authorized distributors