

Goat Anti-Rabbit IgG H&L (Alkaline Phosphatase) ab97048

★★★★★ 1 Abreviews 39 References 2 图像

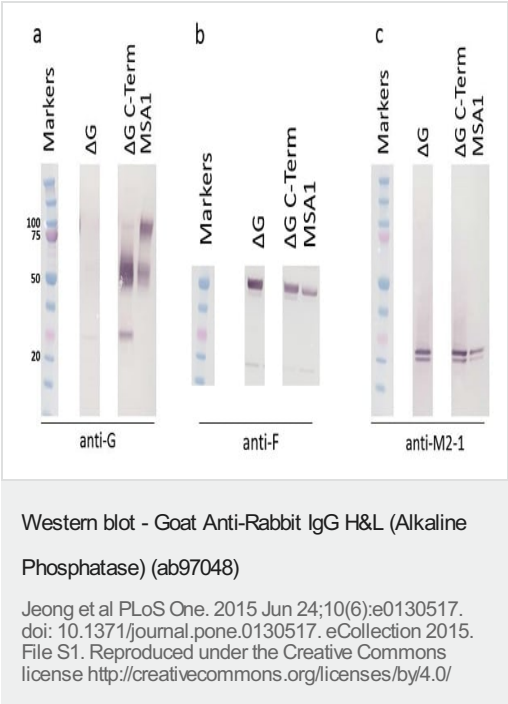
概述	
产品名称	山羊抗兔IgG H&L (Alkaline Phosphatase)
宿主	Goat
靶标种属	Rabbit
特异性	By immunoelectrophoresis and ELISA this antibody reacts specifically with rabbit IgG and with light chains common to other rabbit immunoglobulins. No antibody was detected against non-immunoglobulin serum proteins. This antibody may cross react with IgG from other species.
经测试应用	适用于: ICC, IHC-P, ELISA, WB
偶联物	Alkaline Phosphatase
性能	
形式	Liquid
存放说明	Shipped at 4°C. Store at +4°C.
存储溶液	pH: 6.8 Preservative: 0.09% Sodium azide Constituents: 1.19% HEPES, 0.2% BSA, 0.58% Sodium chloride, 0.0095% Magnesium chloride, 0.00136% Zinc chloride
纯度	Immunogen affinity purified
纯化说明	This antibody was isolated by affinity chromatography using antigen coupled to agarose beads and conjugated to Alkaline Phosphatase (AP).
共轭说明	Molar enzyme: antibody protein ratio is 1:1
克隆	多克隆
同种型	IgG
常规说明	Part of the AbExcel range.
应用	

The Abpromise guarantee **Abpromise™**承诺保证使用ab97048于以下的经测试应用

“应用说明”部分 下显示的仅为推荐的起始稀释度;实际最佳的稀释度/浓度应由使用者检定。

应用	Ab评论	说明
ICC		Use at an assay dependent dilution.
IHC-P		1/100 - 1/1000.
ELISA		1/5000 - 1/50000. Primary
WB	★★★★★ (1)	1/5000 - 1/50000. Chemiluminescent detection

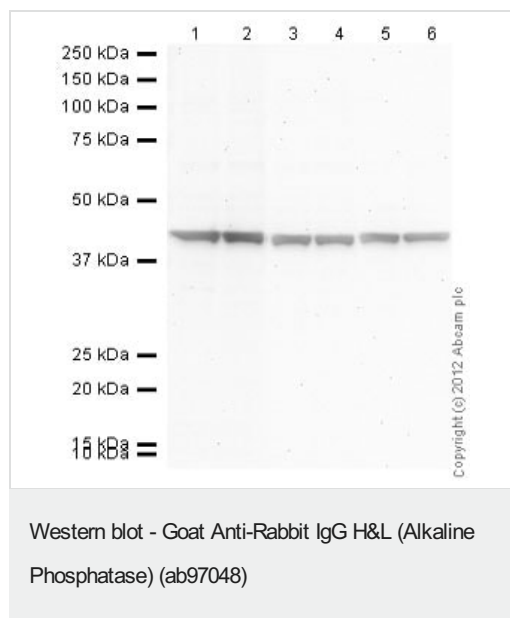
图片



RSV mutants show expected patterns of G, F, and M2-1 expression.

Western blotting of Vero cell lysates infected with RSV ΔG, ΔG C-term, and wild type (MSA1). **(Figure A)** Detection of G using anti-G polyclonal antibody. **(Figure B)** Detection of F using anti-F antibody. **(Figure C)** Detection of M2-1 using anti-M2-1 antibody. Each Figure shows samples that were run on the same gel and irrelevant lanes are covered with white rectangles. Molecular weights in kD are shown in Figure A.

Cell lysates from virus cultures grown for 6 days on Vero cells were subjected to SDS-PAGE, transferred to membranes and probed with a proprietary anti-RSV F antibody or anti-M2-1 antibody (Abcam, [ab94805](#)), and incubated with a secondary goat anti-mouse alkaline phosphatase conjugate. Anti-G western blot was done with rabbit anti-RSV-G polyclonal and incubated with goat anti-rabbit secondary antibody (Abcam, ab97048). Bands were visualized using BCIP/NBT. The molecular weight marker used was Precision Plus Protein Dual Color Standards.



All lanes : Anti-beta Actin antibody - Loading Control ([ab8227](#)) at 1 µg/ml

Lanes 1-6 : HeLa (Human epithelial carcinoma cell line) whole cell lysate

Lysates/proteins at 10 µg per lane.

Secondary

Lanes 1 - 2 : Goat polyclonal Secondary Antibody to Rabbit IgG - H&L (AP) (ab97048) at 1/5000 dilution

Lanes 3 - 4 : Goat polyclonal Secondary Antibody to Rabbit IgG - H&L (AP) (ab97048) at 1/20000 dilution

Lanes 5 - 6 : Goat polyclonal Secondary Antibody to Rabbit IgG - H&L (AP) (ab97048) at 1/50000 dilution

Developed using the ECL technique

Performed under reducing conditions.

Exposure time : 4 minutes

Please note: All products are "FOR RESEARCH USE ONLY. NOT FOR USE IN DIAGNOSTIC PROCEDURES"

Our Abpromise to you: Quality guaranteed and expert technical support

- Replacement or refund for products not performing as stated on the datasheet
- Valid for 12 months from date of delivery
- Response to your inquiry within 24 hours
- We provide support in Chinese, English, French, German, Japanese and Spanish
- Extensive multi-media technical resources to help you
- We investigate all quality concerns to ensure our products perform to the highest standards

If the product does not perform as described on this datasheet, we will offer a refund or replacement. For full details of the Abpromise, please visit <https://www.abcam.cn/abpromise> or contact our technical team.

Terms and conditions

- Guarantee only valid for products bought direct from Abcam or one of our authorized distributors