

### Goat F(ab')<sub>2</sub> Anti-Rabbit IgG - H&L (FITC), pre-adsorbed ab6009

7 References   [1 图像](#)

#### 概述

产品名称	山羊F(ab') <sub>2</sub> 抗兔IgG - H&L (FITC),预吸附二抗
宿主	Goat
靶标种属	Rabbit
特异性	Assay by immunoelectrophoresis resulted in a single precipitin arc against anti-Fluorescein, anti-Goat Serum, Rabbit IgG and Rabbit Serum. No reaction was observed against anti-Pepsin, anti-Goat IgG F(c) or Bovine, Horse, Human, Mouse, Rat and Sheep Serum Proteins.
经测试应用	<b>适用于:</b> ICC/IF, Immunomicroscopy, Flow Cyt, ELISA
最小交叉反应	Chicken, Cow, Goat, Guinea pig, Hamster, Horse, Human, Mouse, Rat, Sheep <a href="#">more details</a>
免疫原	Rabbit IgG whole molecule
偶联物	FITC. Ex: 493nm, Em: 528nm

#### 性能

形式	Liquid
存放说明	Shipped at 4°C. Store at +4°C.
存储溶液	pH: 6.50 Preservative: 0.01% Sodium azide Constituents: 0.42% Tripotassium orthophosphate, 0.87% Sodium chloride, 1% BSA
纯化说明	BSA is IgG and protease free  This product was prepared from monospecific antiserum by immunoaffinity chromatography using Rabbit IgG coupled to agarose beads followed by solid phase adsorption(s) to remove any unwanted reactivities, pepsin digestion and chromatographic separation.
共轭说明	Fluorescein isothiocyanate (FITC) (Molecular Weight 390 daltons) Absorption Wavelength: 495 nm Emission Wavelength: 528 nm Fluorochrome/Protein Ratio: 3.6 moles FITC per mole of Goat IgG F(ab') <sub>2</sub>
克隆	多克隆
同种型	IgG

## 应用

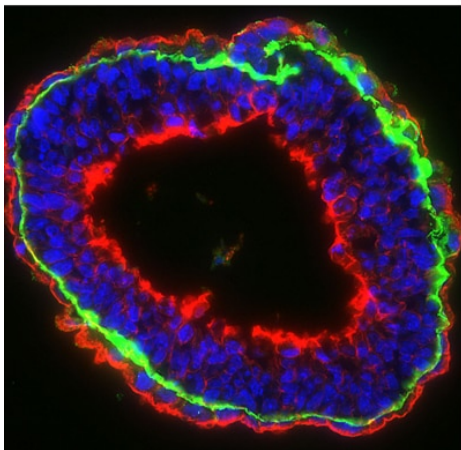
### The Abpromise guarantee

**Abpromise™**承诺保证使用ab6009于以下的经测试应用

“应用说明”部分 下显示的仅为推荐的起始稀释度;实际最佳的稀释度/浓度应由使用者检定。

应用	Ab评论	说明
ICC/IF		1/1000 - 1/5000.
Immunomicroscopy		Use at an assay dependent dilution.
Flow Cyt		1/500 - 1/2500.
ELISA		1/10000 - 1/50000.

## 图片



Immunohistochemistry (Frozen sections) - Goat F(ab')<sub>2</sub> Anti-Rabbit IgG - H&L (FITC), pre-adsorbed (ab6009)

Courtesy of Dr. Shaohua Li, UMDNJ-Robert Wood Johnson Medical School

Sample: mouse embryonic stem cell-differentiated embryoid bodies (EBs)

Preparation:

Fix in 3%PFA in PBS for 30 min at RT

Incubate in 7.5% sucrose-PBS for 3h at RT

Incubate in 15% sucrose-PBS at 4 degree Celsius overnight

Embed the EBs in tissue-Tek OCT compound

Cut frozen sections to 4-20 µm thickness

Primary antibody: Rabbit anti-laminin alpha 1 (basement membrane marker), 1:400

Secondary antibody: Goat F(ab')<sub>2</sub> polyclonal Secondary Antibody to Rabbit IgG - H&L (FITC), pre-adsorbed (ab6009), 1:100

Nuclei were counterstained with DAPI

F-actin was stained with rhodamine-phalloidin, 1:100

**Please note:** All products are "FOR RESEARCH USE ONLY. NOT FOR USE IN DIAGNOSTIC PROCEDURES"

**Our Abpromise to you: Quality guaranteed and expert technical support**

- Replacement or refund for products not performing as stated on the datasheet
- Valid for 12 months from date of delivery
- Response to your inquiry within 24 hours
- We provide support in Chinese, English, French, German, Japanese and Spanish
- Extensive multi-media technical resources to help you
- We investigate all quality concerns to ensure our products perform to the highest standards

If the product does not perform as described on this datasheet, we will offer a refund or replacement. For full details of the Abpromise, please visit <https://www.abcam.cn/abpromise> or contact our technical team.

#### **Terms and conditions**

---

- Guarantee only valid for products bought direct from Abcam or one of our authorized distributors