

Goat Anti-Chicken IgY H&L (HRP) ab97135

★★★★★ [2 Abreviews](#)   [36 References](#)   [3 图像](#)

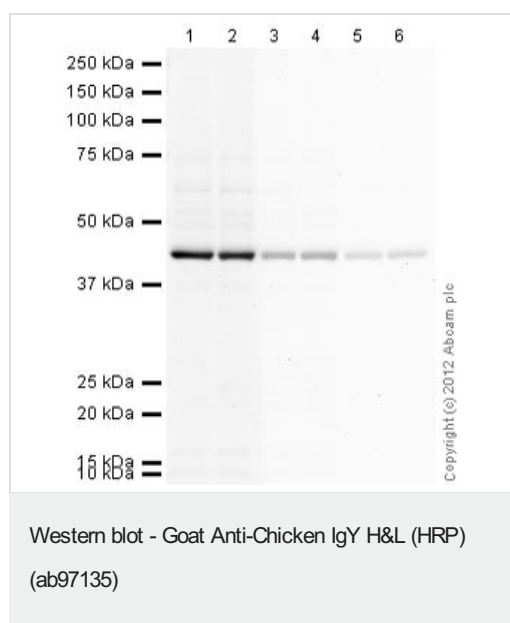
概述	
产品名称	山羊抗鸡IgY H&L (HRP)
宿主	Goat
靶标种属	Chicken
特异性	By immunoelectrophoresis and ELISA this antibody reacts specifically with Chicken IgY and with light chains common to other Chicken immunoglobulins. No antibody was detected against non immunoglobulin serum proteins.
经测试应用	适用于: ICC, IHC-P, ELISA, WB
偶联物	HRP

性能	
形式	Liquid
存放说明	Shipped at 4°C. Store at +4°C.
存储溶液	pH: 6.8 Constituents: 0.2% BSA, 0.05% CMIT/MIT based preservative
纯度	Immunogen affinity purified
纯化说明	This antibody was isolated by affinity chromatography using antigen coupled to agarose beads and conjugated to Horse Radish Peroxidase (HRP).
共轭说明	Molar enzyme/ antibody protein ratio is 4:1
克隆	多克隆
同种型	IgG
常规说明	Part of the <b>AbExcel</b> range.

应用	
The Abpromise guarantee	<b>Abpromise™</b> 承诺保证使用ab97135于以下的经测试应用
“应用说明”部分 下显示的仅为推荐的起始稀释度;实际最佳的稀释度/浓度应由使用者检定。	

应用	Ab评论	说明
ICC		Use at an assay dependent dilution.
IHC-P		1/200 - 1/5000.
ELISA	★★★★★ (1)	1/10000 - 1/100000. (Primary).
WB	★★★★★ (1)	1/2000 - 1/20000. Colorimetric: 1/5000 - 1/30000; Chemiluminescent: 1/10000 - 1/50000

## 图片



**All lanes :** Anti-beta Actin antibody - Loading Control ([ab13822](#)) at 1 µg/ml

**Lanes 1-6 :** HeLa (Human epithelial carcinoma cell line) Whole Cell Lysate  
Lysates/proteins at 10 µg per lane.

### Secondary

**Lanes 1 - 2 :** Goat polyclonal Secondary Antibody to Chicken IgY - H&L (HRP) (ab97135) at 1/2000 dilution

**Lanes 3 - 4 :** Goat polyclonal Secondary Antibody to Chicken IgY - H&L (HRP) (ab97135) at 1/10000 dilution

**Lanes 5 - 6 :** Goat polyclonal Secondary Antibody to Chicken IgY - H&L (HRP) (ab97135) at 1/20000 dilution

Developed using the ECL technique.

Performed under reducing conditions.

**Exposure time :** 90 seconds



**All lanes :** Anti-Vimentin antibody ([ab24525](#))

**All lanes :** Mouse cardiac fibroblasts

Lysates/proteins at 4 µg per lane.

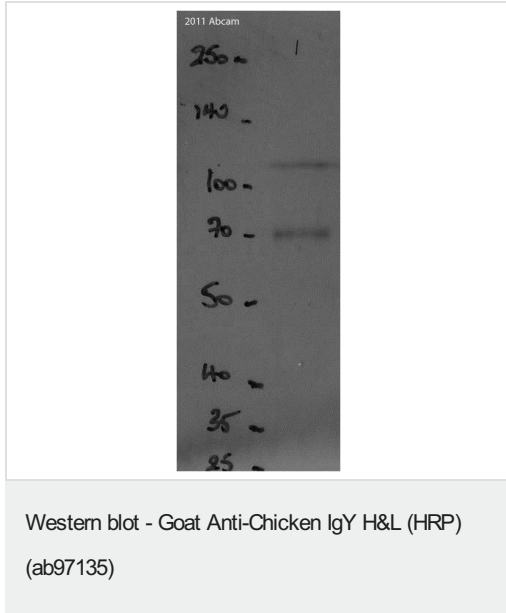
### Secondary

**All lanes :** Goat Anti-Chicken IgY H&L (HRP) (ab97135) at 1/2500 dilution

Developed using the ECL technique.

Performed under reducing conditions.

**Exposure time:** 2 seconds



Ab97135 used to detect a chicken anti-beta Galactosidase antibody ([ab9361](#)). Ab97135 used at a concentration of 1:2000 in 5% milk blocking buffer in 0.1% Tween, 1x PBS. Whole lysates from DH5a (E.coli). Specific band at approx. 110 KDa. Non-specific bands: 70 Kda. NB. Gels run on 10% Acrylamide gels.

*This image is courtesy of an anonymous Abreview.*

**Please note:** All products are "FOR RESEARCH USE ONLY. NOT FOR USE IN DIAGNOSTIC PROCEDURES"

#### Our Abpromise to you: Quality guaranteed and expert technical support

---

- Replacement or refund for products not performing as stated on the datasheet
- Valid for 12 months from date of delivery
- Response to your inquiry within 24 hours
- We provide support in Chinese, English, French, German, Japanese and Spanish
- Extensive multi-media technical resources to help you
- We investigate all quality concerns to ensure our products perform to the highest standards

If the product does not perform as described on this datasheet, we will offer a refund or replacement. For full details of the Abpromise, please visit <https://www.abcam.cn/abpromise> or contact our technical team.

#### Terms and conditions

---

- Guarantee only valid for products bought direct from Abcam or one of our authorized distributors