

Donkey Anti-Rabbit IgG H&L (HRP) ab97064

★★★★★ [1 Abreviews](#) [31 References](#) [2 图像](#)

概述

|       |  |
|-------|--|
| 产品名称  | 驴抗兔IgG H&L (HRP)   |
| 宿主    | Donkey   |
| 靶标种属  | Rabbit   |
| 特异性   | By immunoelectrophoresis and ELISA this antibody reacts specifically with Rabbit IgG and with light chains common to other Rabbit immunoglobulins. No antibody was detected against non-immunoglobulin serum proteins. |
| 经测试应用 | <b>适用于:</b> ICC, IHC-P, ELISA, WB  |
| 偶联物   | HRP  |

性能

|      |   |
|------|---|
| 形式   | Liquid  |
| 存放说明 | Shipped at 4°C. Store at +4°C.  |
| 存储溶液 | pH: 6.8<br>Constituents: 0.2% BSA, 0.05% CMIT/MIT based preservative  |
| 纯度   | Immunogen affinity purified   |
| 纯化说明 | This antibody was isolated by affinity chromatography using antigen coupled to agarose beads and conjugated to Horse Radish Peroxidase (HRP). |
| 共轭说明 | Molar enzyme/ antibody protein ratio is 4:1   |
| 克隆   | 多克隆   |
| 同种型  | IgG   |

应用

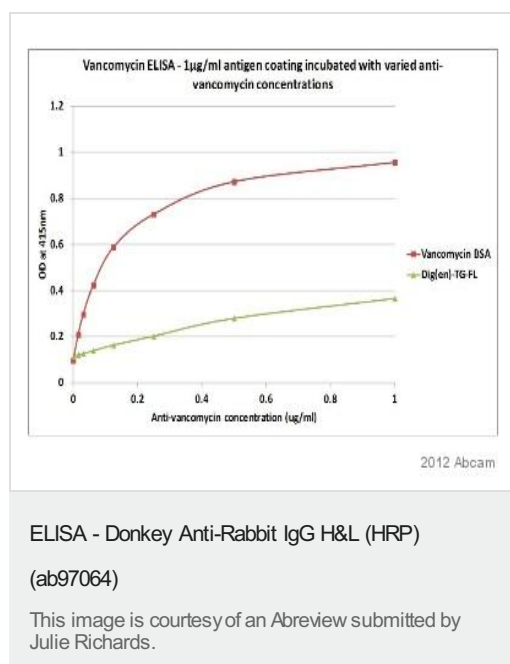
The Abpromise guarantee **Abpromise™**承诺保证使用ab97064于以下的经测试应用

“应用说明”部分 下显示的仅为推荐的起始稀释度;实际最佳的稀释度/浓度应由使用者检定。

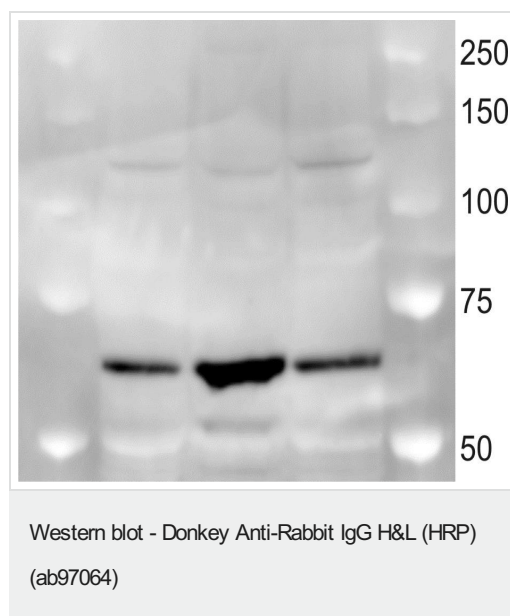
| 应用  | Ab评论 | 说明                                  |
|-----|------|-------------------------------------|
| ICC |      | Use at an assay dependent dilution. |

| 应用    | Ab评论      | 说明  |
|-------|-----------|---|
| IHC-P |           | 1/200 - 1/5000.   |
| ELISA |           | 1/10000 - 1/100000.   |
| WB    | ★★★★★ (1) | 1/5000 - 1/50000. Colorimetric: Use 1/5000-1/30000, Chemiluminescent: Use 1/10000-1/50000 |

## 图片



**ab19968** detecting vancomycin in human serum samples by indirect ELISA. Samples were blocked with 2.5% milk for 30 minutes at 20°C and incubated with the primary antibody (1/1000 in PBS) for 1 hour at 20°C. A HRP-conjugated donkey anti-rabbit IgG H&L (ab97064) (1/1000) was used as the secondary antibody.



Donkey polyclonal secondary antibody to rabbit IgG-H&L (HRP) (ab97064) was used in a dilution of 1:5000. The first antibody was Smad4 antibody [EP618Y] (**ab40759**). The gel was a 4%-12% Bis-Tris Gel with MOPS Buffer. The first band is 30µg nuclear extract of a EBV-transformed B-lymphoblastoid cell line, the second band is 50µg of whole protein extract of the same EBV transformed B-LCL and the third lane is the same than in the second one but only 30µg. In this combination the secondary antibody works excellent. There is only the predicted band of 60 kDa, no additional bands!

*This image is courtesy of Mr Daniel Meier*

**Please note:** All products are "FOR RESEARCH USE ONLY. NOT FOR USE IN DIAGNOSTIC PROCEDURES"

### **Our Abpromise to you: Quality guaranteed and expert technical support**

---

- Replacement or refund for products not performing as stated on the datasheet
- Valid for 12 months from date of delivery
- Response to your inquiry within 24 hours
  
- We provide support in Chinese, English, French, German, Japanese and Spanish
- Extensive multi-media technical resources to help you
- We investigate all quality concerns to ensure our products perform to the highest standards

If the product does not perform as described on this datasheet, we will offer a refund or replacement. For full details of the Abpromise, please visit <https://www.abcam.cn/abpromise> or contact our technical team.

### **Terms and conditions**

---

- Guarantee only valid for products bought direct from Abcam or one of our authorized distributors