

Donkey Anti-Rabbit IgG H&L (HRP) ab6802

114 References 5 图像

概述	
产品名称	驴抗兔IgG H&L (HRP)
宿主	Donkey
靶标种属	Rabbit
经测试应用	适用于: WB, ELISA, Immunomicroscopy, Dot blot, ICC/IF , IHC-P , IHC-Fr
免疫原	Rabbit IgG, whole molecule
偶联物	HRP
性能	
形式	Liquid
存放说明	Shipped at 4°C. Store at +4°C.
存储溶液	pH: 6.50 Preservative: 0.01% Gentamicin sulphate Constituents: 0.42% Tripotassium orthophosphate, 0.87% Sodium chloride, 1% BSA
纯度	Affinity purified
纯化说明	This product was prepared from monospecific antiserum by immunoaffinity chromatography using Rabbit IgG coupled to agarose beads.
克隆	多克隆
同种型	IgG
应用	

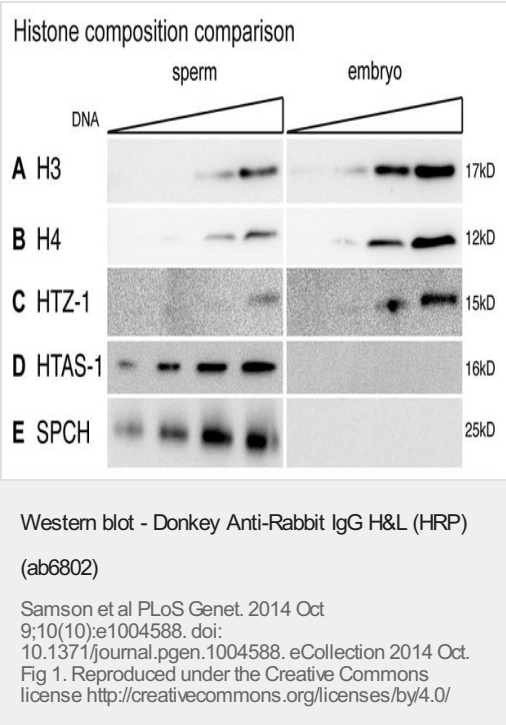
The Abpromise guarantee **Abpromise™**承诺保证使用ab6802于以下的经测试应用

“应用说明”部分 下显示的仅为推荐的起始稀释度;实际最佳的稀释度/浓度应由使用者检定。

应用	Ab评论	说明
WB		1/1000 - 1/3000.
ELISA		1/160000.

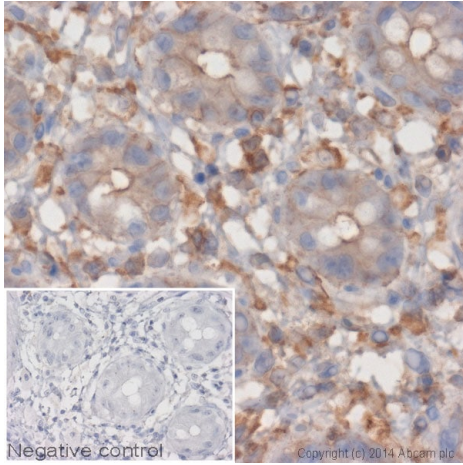
应用	Ab评论	说明
Immunomicroscopy		Use at an assay dependent concentration.
Dot blot		Use at an assay dependent concentration.
ICC/IF		1/500 - 1/2000.
IHC-P		1/500 - 1/2000.
IHC-Fr		1/500 - 1/2000.

图片



Canonical histones are retained in *C. elegans* sperm.

A–E) Western blot analysis of sperm and embryo lysates loaded with equivalent amounts of DNA.
 For full details please see paper.



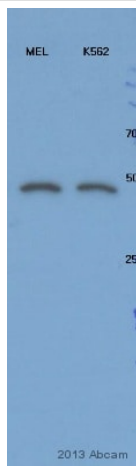
Immunohistochemistry (Formalin/PFA-fixed paraffin-embedded sections) - Donkey Anti-Rabbit IgG H&L (HRP) (ab6802)

IHC image of beta actin staining in human colon formalin fixed paraffin embedded tissue section*.

The section was pre-treated using pressure cooker heat mediated antigen retrieval with sodium citrate buffer (pH 6) for 30 mins. The section was incubated with **ab8227**, 5 µg/ml overnight at +4°C. An HRP-conjugated secondary (ab6802, 1/2,000 dilution) was used for 1 hr at room temperature. The section was counterstained with hematoxylin and mounted with DPX.

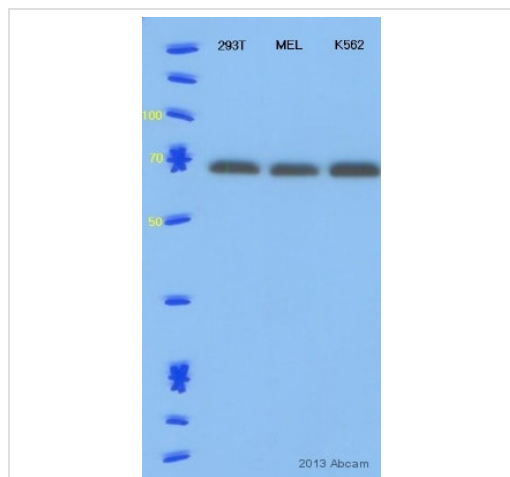
The inset **negative control** image is secondary-only at 1/500 dilution.

*Tissue obtained from the Human Research Tissue Bank, supported by the NIHR Cambridge Biomedical Research Centre



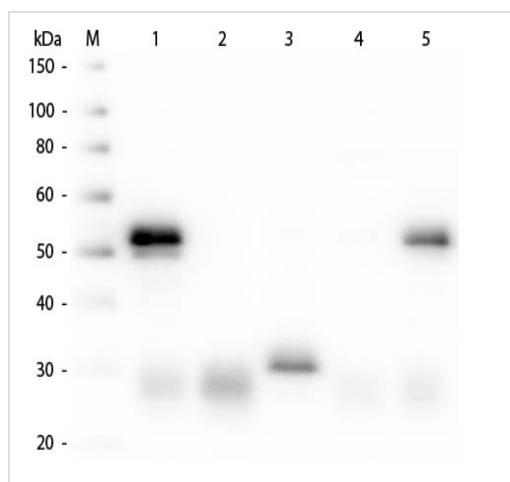
Western blot - Donkey Anti-Rabbit IgG H&L (HRP) (ab6802)

This image is courtesy of an anonymous Abreview.



Western blot - Donkey Anti-Rabbit IgG H&L (HRP)
(ab6802)

This image is courtesy of an Abreview submitted by Min young Kim



Western blot - Donkey Anti-Rabbit IgG H&L (HRP)
(ab6802)

Western blot - Donkey Anti-Rabbit IgG H&L (HRP) (ab6802)

Lane M: 3 μ l Molecular ladder.

Lane 1: Rabbit IgG whole molecule.

Lane 2: Rabbit IgG F(ab) fragment.

Lane 3: Rabbit IgG F(c) fragment.

Lane 4: Rabbit IgM whole molecule.

Lane 5: Normal rabbit serum.

All samples were reduced. Load: 50 ng per lane. Blocked for 30 min at RT.

ab6802 used at 1:5,000 for 60 min at RT. Secondary antibody: None. Predicted/Obsevered Size: 25 and 50 kDa for Rabbit IgG and Serum, 25 kDa for F(c) and F(ab), 70 and 23 kDa for IgM. Rabbit F(c) migrates slightly higher.

Please note: All products are "FOR RESEARCH USE ONLY. NOT FOR USE IN DIAGNOSTIC PROCEDURES"

Our Abpromise to you: Quality guaranteed and expert technical support

- Replacement or refund for products not performing as stated on the datasheet
- Valid for 12 months from date of delivery
- Response to your inquiry within 24 hours
- We provide support in Chinese, English, French, German, Japanese and Spanish
- Extensive multi-media technical resources to help you
- We investigate all quality concerns to ensure our products perform to the highest standards

If the product does not perform as described on this datasheet, we will offer a refund or replacement. For full details of the Abpromise,

please visit <https://www.abcam.cn/abpromise> or contact our technical team.

Terms and conditions

- Guarantee only valid for products bought direct from Abcam or one of our authorized distributors