

Donkey Anti-Rabbit IgG H&L (Biotin) preadsorbed ab7082

4 References [1 图像](#)

概述

产品名称	驴抗兔IgG H&L (Biotin)预吸附二抗
宿主	Donkey
靶标种属	Rabbit
经测试应用	适用于: ICC/IF, WB, ELISA, Immunomicroscopy, Dot blot, IHC-P, IHC-Fr
最小交叉反应	Chicken, Cow, Goat, Guinea pig, Hamster, Horse, Human, Mouse, Rat, Sheep more details
免疫原	Full length native Rabbit IgG (purified).
偶联物	Biotin

性能

形式	Liquid
存放说明	Shipped at 4°C. Store at +4°C short term (1-2 weeks). Upon delivery aliquot. Store at -20°C or -80°C. Avoid freeze / thaw cycle.
存储溶液	pH: 6.50 Preservative: 0.01% Sodium azide Constituents: 0.42% Tripotassium orthophosphate, 0.87% Sodium chloride, 1% BSA
纯度	Affinity purified
纯化说明	Biotinamidocaproate N-Hydroxysuccinimide Ester (BAC) Biotin/Protein Ratio: 10-20 BAC molecules per Goat IgG molecule
共轭说明	This product was prepared from monospecific antiserum by immunoaffinity chromatography using Rabbit IgG coupled to agarose beads followed by solid phase adsorption(s) to remove any unwanted reactivities
克隆	多克隆
同种型	IgG

应用

The Abpromise guarantee **Abpromise™**承诺保证使用ab7082于以下的经测试应用

“应用说明”部分 下显示的仅为推荐的起始稀释度;实际最佳的稀释度/浓度应由使用者检定。

应用	Ab评论	说明
ICC/IF		
WB		
ELISA		
Immunomicroscopy		
Dot blot		
IHC-P		
IHC-Fr		

应用说明

Dot: Use at an assay dependant dilution.

ELISA: 1/50000 - 1/200000.

IHC-P: Use at an assay dependant dilution.

IHC-Fr: Use at an assay dependant dilution.

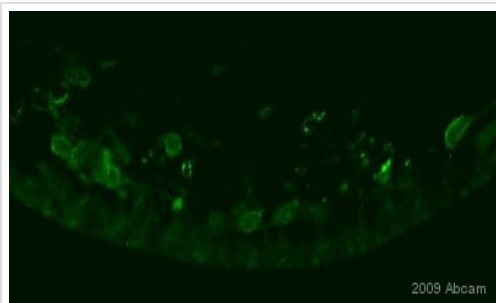
IM: Use at an assay dependant dilution.

WB: Use at an assay dependant dilution.

Not tested in other applications.

Optimal dilutions/concentrations should be determined by the end user.

图片



ab7082 was used at dilution 1/200 with the primary antibody **ab77512** in IHC-Fr. See the review on **ab77512**.

Immunohistochemistry (Frozen sections) - Donkey
Anti-Rabbit IgG H&L (Biotin) preadsorbed (ab7082)

Please note: All products are "FOR RESEARCH USE ONLY. NOT FOR USE IN DIAGNOSTIC PROCEDURES"

Our Abpromise to you: Quality guaranteed and expert technical support

- Replacement or refund for products not performing as stated on the datasheet
- Valid for 12 months from date of delivery
- Response to your inquiry within 24 hours

- We provide support in Chinese, English, French, German, Japanese and Spanish
- Extensive multi-media technical resources to help you
- We investigate all quality concerns to ensure our products perform to the highest standards

If the product does not perform as described on this datasheet, we will offer a refund or replacement. For full details of the Abpromise, please visit <https://www.abcam.cn/abpromise> or contact our technical team.

Terms and conditions

- Guarantee only valid for products bought direct from Abcam or one of our authorized distributors