

Donkey Anti-Rabbit IgG H&L (Alkaline Phosphatase) ab97061

10 References 1 图像

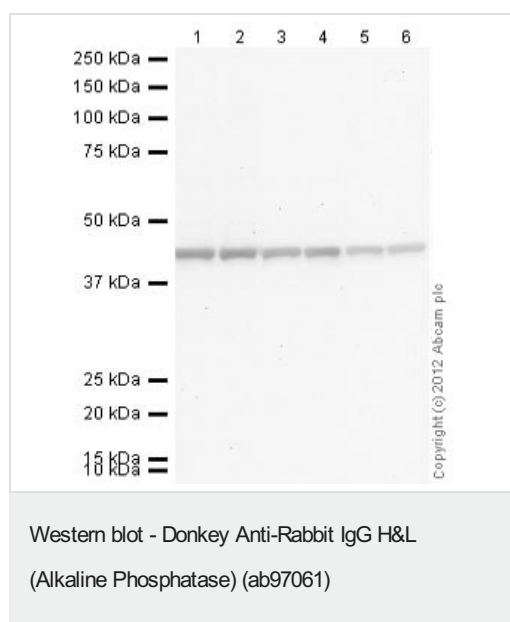
概述	
产品名称	驴抗兔IgG H&L (Alkaline Phosphatase)
宿主	Donkey
靶标种属	Rabbit
特异性	By immunoelectrophoresis and ELISA this antibody reacts specifically with Rabbit IgG and with light chains common to other Rabbit immunoglobulins. No antibody was detected against non-immunoglobulin serum proteins.
经测试应用	适用于: ICC, ELISA, WB, IHC-P
偶联物	Alkaline Phosphatase
性能	
形式	Liquid
存放说明	Shipped at 4°C. Store at +4°C.
存储溶液	pH: 6.8 Preservative: 0.09% Sodium azide Constituents: 0.58% Sodium chloride, 0.0095% Magnesium chloride, 0.00136% Zinc chloride, 1.19% HEPES, 0.2% BSA
纯度	Immunogen affinity purified
纯化说明	This antibody was isolated by affinity chromatography using antigen coupled to agarose beads and conjugated to Alkaline Phosphatase (AP).
克隆	多克隆
同种型	IgG
常规说明	Part of the AbExcel range.
应用	

The Abpromise guarantee **Abpromise™**承诺保证使用ab97061于以下的经测试应用

“应用说明”部分 下显示的仅为推荐的起始稀释度;实际最佳的稀释度/浓度应由使用者检定。

应用	Ab评论	说明
ICC		Use at an assay dependent dilution.
ELISA		1/5000 - 1/50000.
WB		1/5000 - 1/50000.
IHC-P		1/100 - 1/1000.

图片



All lanes : Anti-beta Actin antibody ([ab8227](#)) at 1 µg/ml

All lanes : HeLa (Human epithelial carcinoma cell line) Whole Cell Lysate

Lysates/proteins at 10 µg per lane.

Secondary

Lanes 1-2 : Donkey Anti-Rabbit IgG H&L (Alkaline Phosphatase) (ab97061) at 1/5000 dilution

Lanes 3-4 : Donkey Anti-Rabbit IgG H&L (Alkaline Phosphatase) (ab97061) at 1/20000 dilution

Lanes 5-6 : Donkey Anti-Rabbit IgG H&L (Alkaline Phosphatase) (ab97061) at 1/50000 dilution

Developed using the ECL technique.

Performed under reducing conditions.

Exposure time: 3 minutes

Please note: All products are "FOR RESEARCH USE ONLY. NOT FOR USE IN DIAGNOSTIC PROCEDURES"

Our Abpromise to you: Quality guaranteed and expert technical support

- Replacement or refund for products not performing as stated on the datasheet
- Valid for 12 months from date of delivery
- Response to your inquiry within 24 hours

- We provide support in Chinese, English, French, German, Japanese and Spanish
- Extensive multi-media technical resources to help you
- We investigate all quality concerns to ensure our products perform to the highest standards

If the product does not perform as described on this datasheet, we will offer a refund or replacement. For full details of the Abpromise, please visit <https://www.abcam.cn/abpromise> or contact our technical team.

Terms and conditions

- Guarantee only valid for products bought direct from Abcam or one of our authorized distributors