

Donkey Anti-Goat IgG H&L (HRP) ab97110

★★★★★ [4 Abreviews](#) [88 References](#) [2 图像](#)

概述

| | |
|-------|---|
| 产品名称 | 驴抗山羊IgG H&L (HRP) |
| 宿主 | Donkey |
| 靶标种属 | Goat |
| 特异性 | By immunoelectrophoresis and ELISA this antibody reacts specifically with Goat IgG and with light chains common to other Goat immunoglobulins. No antibody was detected against non immunoglobulin serum proteins. This antibody may cross react with IgG from other species. |
| 经测试应用 | 适用于: IHC-P, ELISA, WB, ICC |
| 免疫原 | Other Immunogen Type corresponding to Goat IgG. Contains both the heavy and light chain |
| 偶联物 | HRP |

性能

| | |
|------|---|
| 形式 | Liquid |
| 存放说明 | Shipped at 4°C. Store at +4°C. |
| 存储溶液 | pH: 6.8 Constituent: 0.05% CMT/MIT based preservative |
| 纯度 | Immunogen affinity purified |
| 纯化说明 | This antibody was isolated by affinity chromatography using antigen coupled to agarose beads and conjugated to Horse Radish Peroxidase (HRP). |
| 共轭说明 | Molar enzyme/ antibody protein ratio is 4:1 |
| 克隆 | 多克隆 |
| 同种型 | IgG |
| 常规说明 | Part of the AbExcel range. |

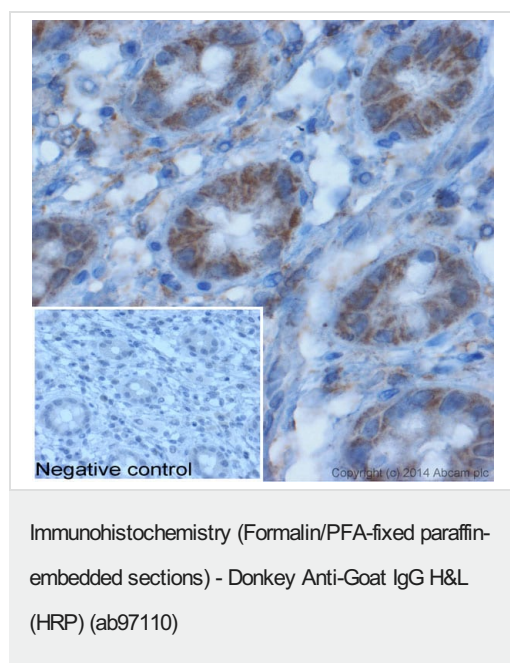
应用

The Abpromise guarantee **Abpromise™** 承诺保证使用ab97110于以下的经测试应用

“应用说明”部分 下显示的仅为推荐的起始稀释度;实际最佳的稀释度/浓度应由使用者检定。

| 应用 | Ab评论 | 说明 |
|-------|-----------|---|
| IHC-P | | 1/200 - 1/500. |
| ELISA | ★★★★★ (1) | 1/10000 - 1/100000. (Primary). |
| WB | ★★★★★ (3) | 1/1000 - 1/30000. Colorimetric: 1/1000 - 1/10000. Chemiluminescent: 1/1000 - 1/30000. In some cases the antibody may be diluted further than indicated. |
| ICC | | 1/200 - 1/500. |

图片

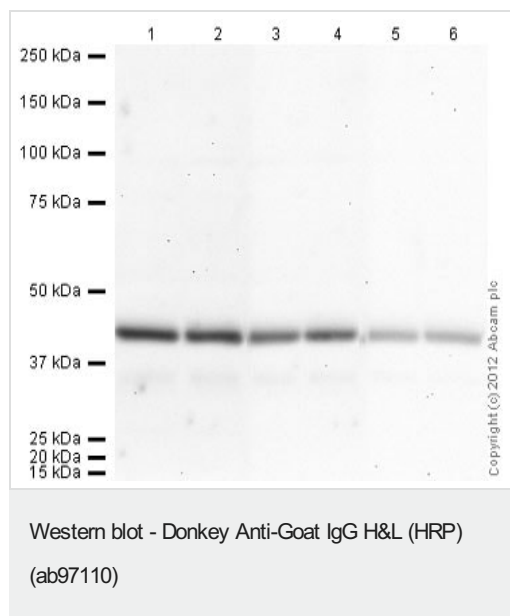


IHC image of beta actin staining in human normal colon formalin fixed paraffin embedded tissue section*.

The section was pre-treated using pressure cooker heat mediated antigen retrieval with sodium citrate buffer (pH 6) for 30 mins. The section was incubated with [ab8229](#), 10 µg/ml overnight at +4°C. An HRP-conjugated secondary (ab97110, 1/100 dilution) was used for 1 hour at room temperature. The section was counterstained with hematoxylin and mounted with DPX.

The inset **negative control** image is secondary-only at 1/200 dilution.

*Tissue obtained from the Human Research Tissue Bank, supported by the NIHR Cambridge Biomedical Research Centre



All lanes : Anti-beta Actin antibody - Loading Control ([ab8229](#)) at 1 µg/ml

All lanes : HeLa (Human epithelial carcinoma cell line) Whole Cell Lysate

Lysates/proteins at 20 µg per lane.

Secondary

Lanes 1-2 & 5-6 : Donkey Anti-Goat IgG H&L (HRP) (ab97110) at 1/20000 dilution

Lanes 3-4 : Donkey Anti-Goat IgG H&L (HRP) (ab97110) at 1/10000 dilution

Developed using the ECL technique.

Performed under reducing conditions.

Exposure time: 20 minutes

Please note: All products are "FOR RESEARCH USE ONLY. NOT FOR USE IN DIAGNOSTIC PROCEDURES"

Our Abpromise to you: Quality guaranteed and expert technical support

- Replacement or refund for products not performing as stated on the datasheet
- Valid for 12 months from date of delivery
- Response to your inquiry within 24 hours
- We provide support in Chinese, English, French, German, Japanese and Spanish
- Extensive multi-media technical resources to help you
- We investigate all quality concerns to ensure our products perform to the highest standards

If the product does not perform as described on this datasheet, we will offer a refund or replacement. For full details of the Abpromise, please visit <https://www.abcam.cn/abpromise> or contact our technical team.

Terms and conditions

- Guarantee only valid for products bought direct from Abcam or one of our authorized distributors