

Chicken Anti-Goat IgG H&L ab86245

2 References 1 图像

概述

产品名称	鸡抗山羊IgG H&L
宿主	Chicken
靶标种属	Goat
特异性	The antibody reacts with both heavy and light chains of goat IgG, and may have some cross-reactivity with IgG of other species.
经测试应用	适用于: WB, ELISA
免疫原	Purified Goat IgG.
阳性对照	Goat plasma.

性能

形式	Liquid
存放说明	Shipped at 4°C. Store at +4°C short term (1-2 weeks). Upon delivery aliquot. Store at -20°C or -80°C. Avoid freeze / thaw cycle.
存储溶液	Preservative: 0.02% Sodium azide Constituent: PBS
纯度	Immunogen affinity purified
克隆	多克隆
同种型	IgY

应用

The Abpromise guarantee **Abpromise™**承诺保证使用ab86245于以下的经测试应用

“应用说明”部分 下显示的仅为推荐的起始稀释度;实际最佳的稀释度/浓度应由使用者检定。

应用	Ab评论	说明
WB		
ELISA		

应用说明

ELISA: 1/2000 - 1/10000.

WB: 1/2000 - 1/10000 for color substrates.

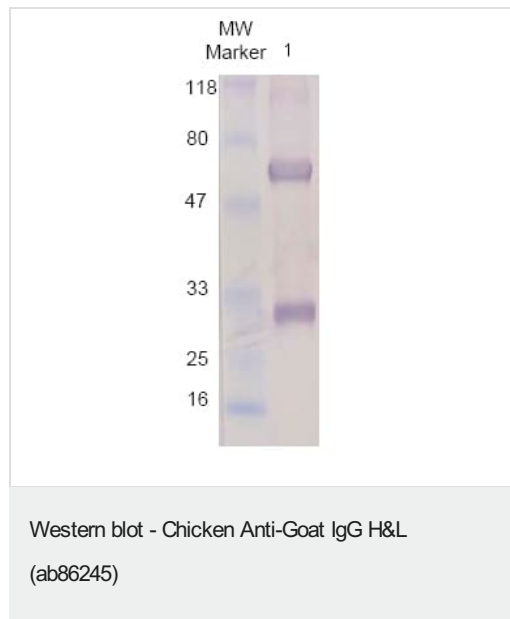
WB: 1/10000 - 1/40000 for chemiluminescence.

Detects a band of approximately 30 and 60 kDa.

Not yet tested in other applications.

Optimal dilutions/concentrations should be determined by the end user.

图片



Chicken Anti-Goat IgG H&L (ab86245) at 1/4000 dilution + Goat plasma at 5 µg

Observed band size : 30 + 60 kDa

Please note: All products are "FOR RESEARCH USE ONLY. NOT FOR USE IN DIAGNOSTIC PROCEDURES"

Our Abpromise to you: Quality guaranteed and expert technical support

- Replacement or refund for products not performing as stated on the datasheet
- Valid for 12 months from date of delivery
- Response to your inquiry within 24 hours
- We provide support in Chinese, English, French, German, Japanese and Spanish
- Extensive multi-media technical resources to help you
- We investigate all quality concerns to ensure our products perform to the highest standards

If the product does not perform as described on this datasheet, we will offer a refund or replacement. For full details of the Abpromise, please visit <https://www.abcam.cn/abpromise> or contact our technical team.

Terms and conditions

- Guarantee only valid for products bought direct from Abcam or one of our authorized distributors