

Recombinant Staphylococcus aureus Protein A ab52953

[2 References](#) [2 图像](#)

描述

产品名称	重组金黄色葡萄球菌蛋白A
纯度	> 99 % SDS-PAGE. Purity: >99% by SDS-PAGE and HPLC analyses.
内毒素水平	< 0.100 Eu/mg
表达系统	Escherichia coli
Accession	<u>P02976</u>
蛋白长度	Protein fragment
无动物成分	Yes
性质	Recombinant
种属	Staphylococcus aureus
预测分子量	36 kDa
氨基酸	32 to 327
标签	His tag N-Terminus
额外的序列信息	Protein A Ig binding domains with 6x His-tag on N-terminus. There is a linker between the His tag and recombinant fragment (~11 aa). The sequence cannot be shared.

技术指标

Our **Abpromise guarantee** covers the use of **ab52953** in the following tested applications.

The application notes include recommended starting dilutions; optimal dilutions/concentrations should be determined by the end user.

应用	SDS-PAGE
形式	Liquid
补充说明	<p>This product is manufactured by BioVision, an Abcam company and was previously called 6500 Protein A (Liquid form). 6500-10 is the same size as the 10 mg size of ab52953.</p> <p>The cell wall binding region, albumin binding region and other non-specific binding regions have been eliminated from this protein to ensure the maximum specific IgG binding. . The 6x His-tag can be used for affinity purification or for protein A detection using anti-His-tag antibody. The recombinant Protein A is ideal for purification of polyclonal or monoclonal IgG antibodies.</p> <p>Protein A binds to most human and mouse IgG subclasses (e.g: human IgG1, IgG2, IgG4; mouse IgG1, IgG2a, IgG2b, IgG3).</p>

It also binds to total IgG from cow, guinea pig, hamster, horse, pig, and rabbit.
Protein A has little affinity to chicken, goat, rat and sheep.

制备和贮存

稳定性和存储

Shipped at 4°C. Upon delivery aliquot. Store at -20°C. Avoid freeze / thaw cycle.

Constituent: Water

常规信息

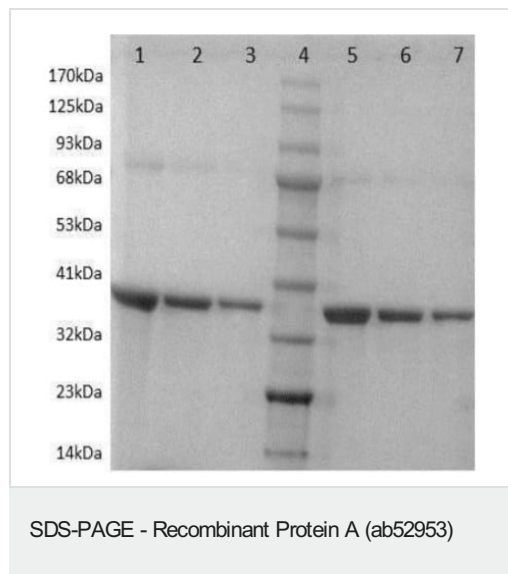
相关性

Protein A is a surface protein of *S.aureus* which binds IgG molecules by their Fc region. In serum, the bacteria will bind IgG molecules in the wrong orientation on their surface which hinders opsonization and phagocytosis. Mutants of *S. aureus* lacking protein A are more efficiently phagocytosed in vitro, and mutants in infection models have diminished virulence. Due to its affinity for the Fc region of many mammalian immunoglobulins, protein A is considered a universal reagent in biochemistry and immunology.

细胞定位

Secreted; cell wall.

图片

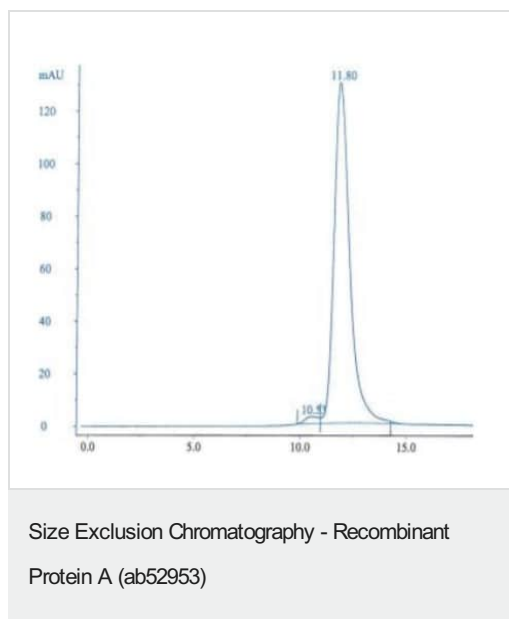


SDS-PAGE (4-20%) of Recombinant Protein A.

Lane 1-3: 5, 2.5, and 1 µg, Protein A under Reducing conditions,

Lane4: protein Ladder;

Lane5-7: 5, 2.5, and 1 µg of Protein A under Non-Reducing conditions



SEC chromatography of Protein A. The apparent molecular weight is ~ 70 KDa calculated based on SEC standard curve.

Please note: All products are "FOR RESEARCH USE ONLY. NOT FOR USE IN DIAGNOSTIC PROCEDURES"

Our Abpromise to you: Quality guaranteed and expert technical support

- Replacement or refund for products not performing as stated on the datasheet
- Valid for 12 months from date of delivery
- Response to your inquiry within 24 hours
- We provide support in Chinese, English, French, German, Japanese and Spanish
- Extensive multi-media technical resources to help you
- We investigate all quality concerns to ensure our products perform to the highest standards

If the product does not perform as described on this datasheet, we will offer a refund or replacement. For full details of the Abpromise, please visit <https://www.abcam.cn/abpromise> or contact our technical team.

Terms and conditions

- Guarantee only valid for products bought direct from Abcam or one of our authorized distributors