

Recombinant Protein G ab49807

5 References 1 图像

描述	
产品名称	重组蛋白G
纯度	> 95 % SDS-PAGE. >98% by SDS-PAGE and HPLC analyses. The albumin binding domain as well as cell wall and cell membrane binding domains have been removed to ensure the maximum specific IgG binding capacity.
表达系统	Escherichia coli
Accession	<u>P19909</u>
蛋白长度	Protein fragment
无动物成分	No
性质	Recombinant
种属	Streptococcus
序列	LDKYGVSDYHKNLINNAKTVEGVKDLQAQVVESAKKARISEA TDGLSDFL KSQTPAEDTVKSIELAEAKVLANRELDKYGVSDYYKNLINNA KTVEGVKA LIDEILAALPKTDTYKLILNGKTLKGETTTEAVDAATAEKVF KQYANDNG VDGE
预测分子量	26 kDa including tags
氨基酸	190 to 384
标签	His tag N-Terminus

技术指标	
Our Abpromise guarantee covers the use of ab49807 in the following tested applications.	
The application notes include recommended starting dilutions; optimal dilutions/concentrations should be determined by the end user.	
应用	SDS-PAGE Affinity Purification
形式	Lyophilized
补充说明	This product is manufactured by BioVision, an Abcam company and was previously called 6510 Protein G. 6510-1 is the same size as the 1 mg size of ab49807. Protein G can be used to detect, quantify and purify IgG antibodies and antibody/antigen

complexes. The 6-His-tag on N-terminus can be used for affinity purification or protein G detection using anti-His-tag antibodies.

This protein contains only IgG binding domains.

制备和贮存

稳定性和存储

Shipped at 4°C. Upon delivery aliquot and store at -20°C. Avoid freeze / thaw cycles.

pH: 7.40

Constituents: 10.269% Trehalose, 0.727% Dibasic monohydrogen potassium phosphate, 0.248% Monobasic dihydrogen potassium phosphate

常规信息

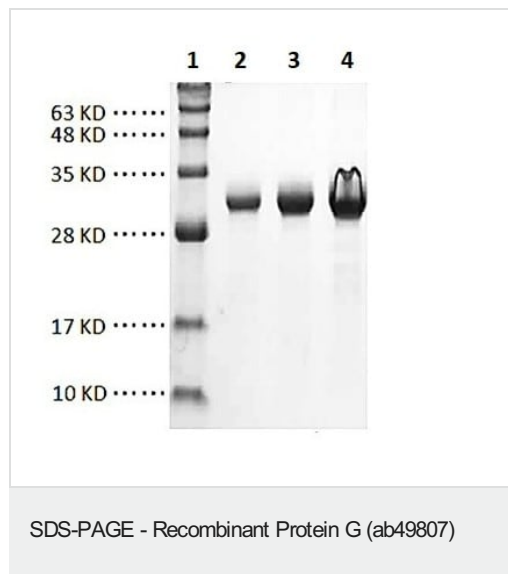
相关性

Protein G is a bacterial protein derived from the cell wall of certain strains of *β*-hemolytic *Streptococci*. It binds with high affinity to the Fc portion of various classes and subclasses of immunoglobulins from a variety of species. Protein G binds to all IgG subclasses from human, mouse and rat species. It also binds to total IgG from guinea pig, rabbit, goat, cow, sheep, and horse. Protein G binds preferentially to the Fc portion of IgG, but can also bind to the Fab region, making it useful for purification of F(ab') fragments of IgG. Due to its affinity for the Fc region of many mammalian immunoglobulins, protein G is considered a universal reagent in biochemistry and immunology.

细胞定位

Cell Wall and Secreted

图片



Different amounts of Recombinant Protein G loaded under reducing conditions and stained with Coomassie Blue. The protein has a predicted molecular weight (MW) of ~ 26.1 kDa. However it runs larger on a SDS-PAGE gel. SDS-PAGE (12%) of Recombinant Protein G:

Lane 1: MW Marker

Lane 2 : Protein G (2.2 µg)

Lane 3 : Protein G (4.4 µg)

Lane 4 : Protein G (8.8 µg)

Please note: All products are "FOR RESEARCH USE ONLY. NOT FOR USE IN DIAGNOSTIC PROCEDURES"

Our Abpromise to you: Quality guaranteed and expert technical support

- Replacement or refund for products not performing as stated on the datasheet

- Valid for 12 months from date of delivery
- Response to your inquiry within 24 hours
- We provide support in Chinese, English, French, German, Japanese and Spanish
- Extensive multi-media technical resources to help you
- We investigate all quality concerns to ensure our products perform to the highest standards

If the product does not perform as described on this datasheet, we will offer a refund or replacement. For full details of the Abpromise, please visit <https://www.abcam.cn/abpromise> or contact our technical team.

Terms and conditions

- Guarantee only valid for products bought direct from Abcam or one of our authorized distributors