

Recombinant Protein A + Protein G ab52213

[1 References](#) [1 图像](#)

描述

产品名称	重组蛋白A +蛋白G
生物活性	Protein A+G binds to all IgG subclasses (from various mammalian species).
纯度	> 98 % SDS-PAGE.
表达系统	Escherichia coli
蛋白长度	Protein fragment
无动物成分	No
性质	Recombinant
标签	His tag N-Terminus
额外的序列信息	The molecular weight including the His tag is 59.7 kDa Protein A: P02976 Protein G: P19909

技术指标

Our **Abpromise guarantee** covers the use of **ab52213** in the following tested applications.

The application notes include recommended starting dilutions; optimal dilutions/concentrations should be determined by the end user.

应用	SDS-PAGE Affinity Purification
形式	Lyophilized
补充说明	<p>This product is manufactured by BioVision, an Abcam company and was previously called 6502 Protein A/G. 6502-1 is the same size as the 1 mg size of ab52213.</p> <p>This product is a genetically engineered fusion protein that combines the IgG binding profiles of both Protein A and Protein G. Protein A/G contains 6x His-tag on the N-terminus, five Ig-binding regions of protein A fusion with three Ig-binding region of protein G. The 6x His-tag on the N-terminus can be used for affinity purification or for protein A/G detection using an anti-His-tag antibody. Non-specific binding regions, including cell wall binding regions, albumin binding regions and other non-specific binding regions have been eliminated from this fusion protein A/G, to ensure the maximum specific IgG binding.</p> <p>Protein A+G binds to all IgG subclasses (from various mammalian species).</p>

制备和贮存

稳定性和存储

Shipped at 4°C. Upon delivery aliquot and store at -20°C. Avoid freeze / thaw cycles.

Constituent: 0.87% Sodium chloride

Without Mg⁺² and Ca⁺²

复溶

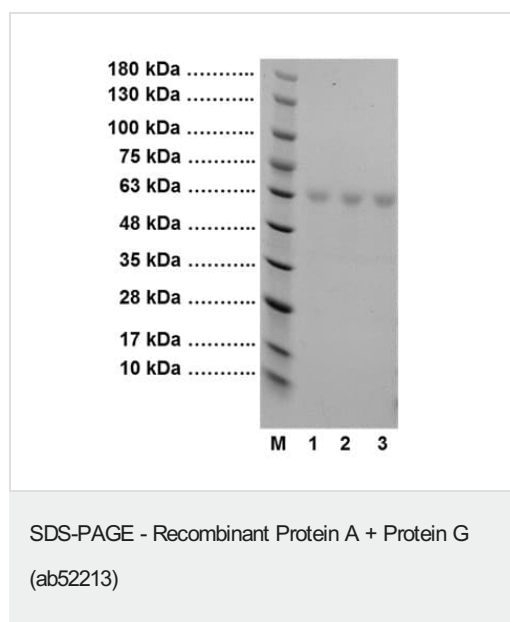
Reconstitute in water to a concentration of 5 mg/ml.

常规信息

细胞定位

Protein A: Secreted; cell wall. Protein G: Cell Wall and Secreted

图片



4-20% SDS-PAGE of Protein A/G: 10, 15 and 20 µg of Recombinant Protein A/G loaded in each lane under reducing conditions and stained with Coomassie Blue. Recombinant Protein A/G has a predicted MW of ~ 59.7kDa.

Please note: All products are "FOR RESEARCH USE ONLY. NOT FOR USE IN DIAGNOSTIC PROCEDURES"

Our Abpromise to you: Quality guaranteed and expert technical support

- Replacement or refund for products not performing as stated on the datasheet
- Valid for 12 months from date of delivery
- Response to your inquiry within 24 hours
- We provide support in Chinese, English, French, German, Japanese and Spanish
- Extensive multi-media technical resources to help you
- We investigate all quality concerns to ensure our products perform to the highest standards

If the product does not perform as described on this datasheet, we will offer a refund or replacement. For full details of the Abpromise, please visit <https://www.abcam.cn/abpromise> or contact our technical team.

Terms and conditions

- Guarantee only valid for products bought direct from Abcam or one of our authorized distributors