

Recombinant pig Tissue Plasminogen Activator protein ab92728

1 图像

描述

产品名称	重组猪组织Plasminogen活化剂蛋白
生物活性	>95 percent active
纯度	> 95 % SDS-PAGE. Sterile filtered through 0.2 micron filter. >95% single chain.
表达系统	Insect cells
蛋白长度	Full length protein
无动物成分	No
性质	Recombinant
种属	Pig

技术指标

Our **Abpromise guarantee** covers the use of **ab92728** in the following tested applications.

The application notes include recommended starting dilutions; optimal dilutions/concentrations should be determined by the end user.

应用	Functional Studies Western blot ELISA SDS-PAGE
形式	Liquid
补充说明	Produced using non-baculovirus insect cells.

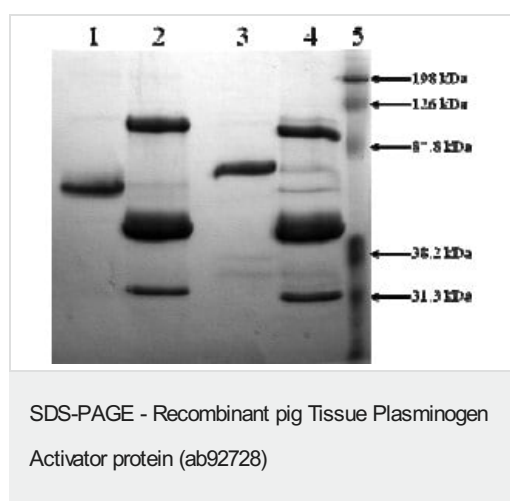
制备和贮存

稳定性和存储	Shipped on dry ice. Upon delivery aliquot and store at -80°C. Avoid freeze / thaw cycles. pH: 7.40 Constituents: 9.52% HEPES, 0.58% Sodium chloride This product is an active protein and may elicit a biological response in vivo, handle with caution.
--------	---

常规信息

功能	Converts the abundant, but inactive, zymogen plasminogen to plasmin by hydrolyzing a single Arg-Val bond in plasminogen. By controlling plasmin-mediated proteolysis, it plays an important role in tissue remodeling and degradation, in cell migration and many other physiopathological events. Play a direct role in facilitating neuronal migration.
组织特异性	Synthesized in numerous tissues (including tumors) and secreted into most extracellular body fluids, such as plasma, uterine fluid, saliva, gingival crevicular fluid, tears, seminal fluid, and milk.
疾病相关	Note=Increased activity of TPA results in increased fibrinolysis of fibrin blood clots that is associated with excessive bleeding. Defective release of TPA results in hypofibrinolysis that can lead to thrombosis or embolism.
序列相似性	Belongs to the peptidase S1 family. Contains 1 EGF-like domain. Contains 1 fibronectin type-I domain. Contains 2 kringle domains. Contains 1 peptidase S1 domain.
结构域	Both FN1 and one of the kringle domains are required for binding to fibrin. Both FN1 and EGF-like domains are important for binding to LRP1. The FN1 domain mediates binding to annexin A2. The second kringle domain is implicated in binding to cytokeratin-8 and to the endothelial cell surface binding site.
翻译后修饰	The single chain, almost fully active enzyme, can be further processed into a two-chain fully active form by a cleavage after Arg-310 catalyzed by plasmin, tissue kallikrein or factor Xa. Differential cell-specific N-linked glycosylation gives rise to two glycoforms, type I (glycosylated at Asn-219) and type II (not glycosylated at Asn-219). The single chain type I glycoform is less readily converted into the two-chain form by plasmin, and the two-chain type I glycoform has a lower activity than the two-chain type II glycoform in the presence of fibrin. N-glycosylation of Asn-152; the bound oligomannosidic glycan is involved in the interaction with the mannose receptor. Characterization of O-linked glycan was studied in Bowes melanoma cell line.
细胞定位	Secreted > extracellular space.

图片



10% SDS-PAGE showing ab92728

Lane 1 ab92728 Non-reduced (3µg)

Lane 2 ab92728 (3µg) + PAI-1 (12µg) Non-reduced

Lane 3 ab92728 Reduced (3µg)

Lane 4 ab92728 (3µg) + PAI-1 (12µg) Reduced

Lane 5 MWM

Please note: All products are "FOR RESEARCH USE ONLY. NOT FOR USE IN DIAGNOSTIC PROCEDURES"

Our Abpromise to you: Quality guaranteed and expert technical support

- Replacement or refund for products not performing as stated on the datasheet
- Valid for 12 months from date of delivery
- Response to your inquiry within 24 hours

- We provide support in Chinese, English, French, German, Japanese and Spanish
- Extensive multi-media technical resources to help you
- We investigate all quality concerns to ensure our products perform to the highest standards

If the product does not perform as described on this datasheet, we will offer a refund or replacement. For full details of the Abpromise, please visit <https://www.abcam.cn/abpromise> or contact our technical team.

Terms and conditions

- Guarantee only valid for products bought direct from Abcam or one of our authorized distributors