

# Recombinant mouse PDE5A/PDE5 protein ab80330

### 3 图像

#### 描述

---

产品名称	重组小鼠PDE5A/PDE5蛋白
生物活性	Specific Activity: 4630 pmol/min/μg. Assay conditions: 10 mM Tris-HCl, pH7.4, 10 mM MgCl <sub>2</sub> , 1 mM MnCl <sub>2</sub> , 200 μM cGMP, 2.5 kU 5' nucleotidase, 37°C, 20min.
纯度	> 70 % SDS-PAGE. Affinity purified.
表达系统	Baculovirus infected Sf9 cells
蛋白长度	Full length protein
无动物成分	No
性质	Recombinant
种属	Mouse

#### 技术指标

---

Our **Abpromise guarantee** covers the use of **ab80330** in the following tested applications.

The application notes include recommended starting dilutions; optimal dilutions/concentrations should be determined by the end user.

应用	Functional Studies SDS-PAGE Western blot
形式	Liquid
补充说明	This product was previously labelled as PDE5A

#### 制备和贮存

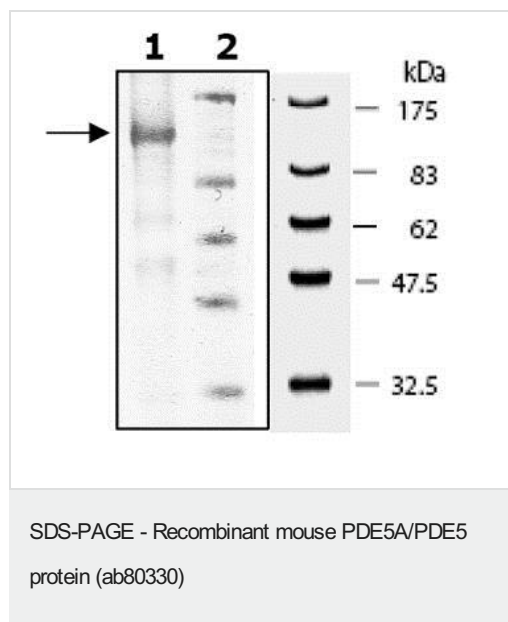
---

稳定性和存储	Shipped on Dry Ice. Upon delivery aliquot. Store at -80°C. Avoid freeze / thaw cycle. pH: 8.00 Constituents: 0.0462% (R*,R*)-1,4-Dimercaptobutan-2,3-diol, 0.395% Tris HCl, 0.05% Tween, 50% Glycerol (glycerin, glycerine), 0.58% Sodium chloride This product is an active protein and may elicit a biological response in vivo, handle with caution.
--------	--

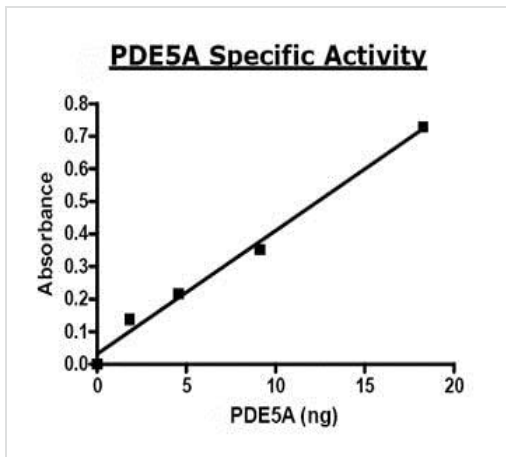
## 常规信息

<b>功能</b>	Plays a role in signal transduction by regulating the intracellular concentration of cyclic nucleotides. This phosphodiesterase catalyzes the specific hydrolysis of cGMP to 5'-GMP.
<b>组织特异性</b>	Expressed in aortic smooth muscle cells, heart, placenta, skeletal muscle and pancreas and, to a much lesser extent, in brain, liver and lung.
<b>通路</b>	Purine metabolism; 3',5'-cyclic GMP degradation; GMP from 3',5'-cyclic GMP: step 1/1.
<b>序列相似性</b>	Belongs to the cyclic nucleotide phosphodiesterase family. Contains 2 GAF domains.
<b>结构域</b>	Composed of a C-terminal catalytic domain containing two putative divalent metal sites and an N-terminal regulatory domain which contains two homologous allosteric cGMP-binding regions, A and B.
<b>翻译后修饰</b>	Phosphorylation is regulated by binding of cGMP to the two allosteric sites.

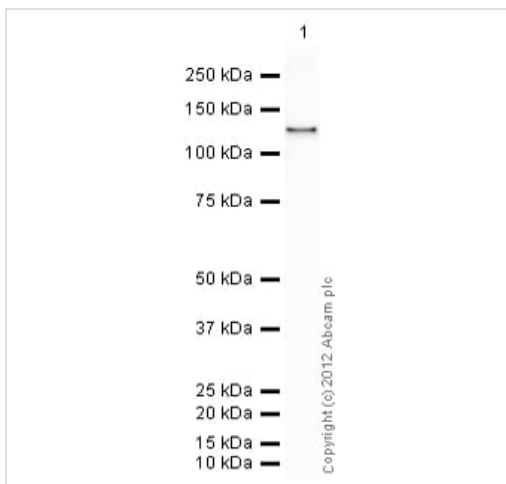
## 图片



Lane 1: ab80330 on 10% SDS-PAGE, Coomassie staining, 5 $\mu$ g.  
Lane 2: Protein marker.



Functional Studies - Recombinant mouse PDE5A/PDE5 protein (ab80330)



Western blot - Recombinant mouse PDE5A/PDE5 protein (ab80330)

Anti-PDE5A/PDE5 antibody (**ab64179**) at 1 µg/ml + Recombinant mouse PDE5A/PDE5 protein (ab80330) at 0.001 µg

**Secondary**

Goat Anti-Rabbit IgG H&L (HRP) preadsorbed (**ab97080**) at 1/5000 dilution

Developed using the ECL technique.

Performed under reducing conditions.

**Exposure time:** 1 minute

**Please note:** All products are "FOR RESEARCH USE ONLY. NOT FOR USE IN DIAGNOSTIC PROCEDURES"

**Our Abpromise to you: Quality guaranteed and expert technical support**

- Replacement or refund for products not performing as stated on the datasheet
- Valid for 12 months from date of delivery
- Response to your inquiry within 24 hours
- We provide support in Chinese, English, French, German, Japanese and Spanish
- Extensive multi-media technical resources to help you
- We investigate all quality concerns to ensure our products perform to the highest standards

If the product does not perform as described on this datasheet, we will offer a refund or replacement. For full details of the Abpromise, please visit <https://www.abcam.cn/abpromise> or contact our technical team.

## Terms and conditions

---

- Guarantee only valid for products bought direct from Abcam or one of our authorized distributors