

Recombinant mouse PAI1 protein ab93068

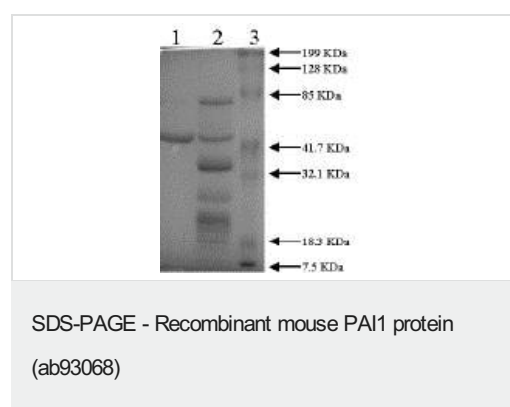
1 References 1 图像

描述	
产品名称	重组小鼠PAI1蛋白
生物活性	ab93068 is 80 (+/-) 5% active by uPA titration. The active fraction typically contains 70 percent active PAI1. Active concentration = ~2.0 mg/mL.
纯度	> 95 % SDS-PAGE.
表达系统	Escherichia coli
Accession	<u>P22777</u>
蛋白长度	Full length protein
无动物成分	No
性质	Recombinant
种属	Mouse
序列	LPLRESHTAHQATDFGVKFVQQVVQASKDRNVVFSPIYGVSSV LAMLQMTT AGKTRRQIQDAMGFKVNEKGTALRQLSKELMGPWNKNEIS TADAIQVQ RDLELVQGFMPHFFKLFQTMVKQVDFSEVERARFIINDWVER HTKGMIND LLAKGAVDELTRLVLVNALYFSGQWKTPFLEASTHQRLFHKS DGSTVSPV MMAQSNKFNYTEFTTPDGLDYVVELPYQGDLSMFIAAPFE KDVHLSAL TNILDAELIRQWKGNMTRLPRLLILPKFSLETEVDLRGPLEK LGMPDMFS ATLADFTSLSDQEQLSVAQALQKVRIEVNESGTVASSSTAFV ISARMAPT EMVIDRSFLFVVRHNPTETILFMGQVMEP
氨基酸	24 to 402

技术指标	
Our Abpromise guarantee covers the use of ab93068 in the following tested applications.	
The application notes include recommended starting dilutions; optimal dilutions/concentrations should be determined by the end user.	
应用	SDS-PAGE

	Functional Studies
形式	Liquid
制备和贮存	
稳定性和存储	<p>Shipped on dry ice. Upon delivery aliquot and store at -80°C. Avoid freeze / thaw cycles.</p> <p>pH: 5.00</p> <p>Constituents: 0.41% Sodium acetate, 0.0292% EDTA, 0.58% Sodium chloride</p> <p>This product is an active protein and may elicit a biological response in vivo, handle with caution.</p>
常规信息	
功能	This inhibitor acts as 'bait' for tissue plasminogen activator, urokinase, and protein C. Its rapid interaction with TPA may function as a major control point in the regulation of fibrinolysis.
组织特异性	Found in plasma and platelets and in endothelial, hepatoma and fibrosarcoma cells.
疾病相关	<p>Defects in SERPINE1 are the cause of plasminogen activator inhibitor-1 deficiency (PAI-1D) [MIM:613329]. It is a hematologic disorder characterized by increased bleeding after trauma, injury, or surgery. Affected females have menorrhagia. The bleeding defect is due to increased fibrinolysis of fibrin blood clots due to deficiency of plasminogen activator inhibitor-1, which inhibits tissue and urinary activators of plasminogen.</p> <p>Note=High concentrations of SERPINE1 seem to contribute to the development of venous but not arterial occlusions.</p>
序列相似性	Belongs to the serpin family.
翻译后修饰	Inactivated by proteolytic attack of the urokinase-type (u-PA) and the tissue-type (TPA), cleaving the 369-Arg-Met-370 bond.
细胞定位	Secreted.

图片



10% SDS-PAGE

Lane 1: PAI1 (5 µg) Reduced

Lane 2: PAI1 (5 µg) + uPA-HTC (8 µg) Reduced

Lane 3: Prestained Standard

Please note: All products are "FOR RESEARCH USE ONLY. NOT FOR USE IN DIAGNOSTIC PROCEDURES"

Our Abpromise to you: Quality guaranteed and expert technical support

- Replacement or refund for products not performing as stated on the datasheet
- Valid for 12 months from date of delivery
- Response to your inquiry within 24 hours

- We provide support in Chinese, English, French, German, Japanese and Spanish
- Extensive multi-media technical resources to help you
- We investigate all quality concerns to ensure our products perform to the highest standards

If the product does not perform as described on this datasheet, we will offer a refund or replacement. For full details of the Abpromise, please visit <https://www.abcam.cn/abpromise> or contact our technical team.

Terms and conditions

- Guarantee only valid for products bought direct from Abcam or one of our authorized distributors