

Recombinant mouse IL-1 beta protein (Active) ab259421

5 图像

描述

产品名称	重组小鼠IL-1 beta蛋白(Active)	
生物活性	Fully biologically active compared to a standard. ED ₅₀ is ≤ 0.5294 ng /ml , corresponding to a specific activity of 1.89 x 10 ⁶ units/mg.	
纯度	≥ 95 % SDS-PAGE. Purity by HPLC ≥95%.	
内毒素水平	≤0.005 Eu/μg	
表达系统	HEK 293 cells	
Accession	<u>P10749</u>	
蛋白长度	Full length protein	
无动物成分	Yes	
无载体	是	
性质	Recombinant	
种属	Mouse	
序列	VPIRQLHYRL RDEQQKSLVL SDPYELKALH LNGQNINQQV IFSMSFVQGE PSNDKIPVAL GLKGNLYLS CVMKDGTPPTL QLESVDPKQY PKKKMEKRFV FNKIEVKSKV EFESAEFPNW YISTSQAEHK PVFLGNNSGQ DIIDFTMESV SS	
预测分子量	17 kDa	
分子量信息	M+0.61 Da (calc MW 17451.39 Da)	
氨基酸	118 to 269	
额外的序列信息	N-Terminal Glycine. Full-length mature chain lacking the propeptide.	

技术指标

Our **Abpromise guarantee** covers the use of **ab259421** in the following tested applications.

The application notes include recommended starting dilutions; optimal dilutions/concentrations should be determined by the end user.

应用	Cell Culture
	Functional Studies
	SDS-PAGE

Mass Spectrometry

HPLC

Sandwich ELISA

形式

Lyophilized

补充说明

This protein is filter sterilised prior to aliquoting and lyophilisation. All aliquoting and lyophilisation steps are performed in a sterile environment

制备和贮存

稳定性和存储

Shipped at Room Temperature. Store at Room Temperature.

pH: 6.00

Constituents: 0.727% Dibasic monohydrogen potassium phosphate, 0.248% Monobasic dihydrogen potassium phosphate, 10.26% Trehalose

Buffer lyophilised from

This product is an active protein and may elicit a biological response in vivo, handle with caution.

复溶

Reconstitute in PBS, aliquot and store at -80 C for 12 months or +4 C for 1 week. Avoid repeated freeze thaw. Lyophilized contents may appear as either a translucent film or a white powder. This variance does not affect the quality of the product.

常规信息

功能

Potent proinflammatory cytokine. Initially discovered as the major endogenous pyrogen, induces prostaglandin synthesis, neutrophil influx and activation, T-cell activation and cytokine production, B-cell activation and antibody production, and fibroblast proliferation and collagen production. Promotes Th17 differentiation of T-cells.

组织特异性

Expressed in activated monocytes/macrophages (at protein level).

序列相似性

Belongs to the IL-1 family.

翻译后修饰

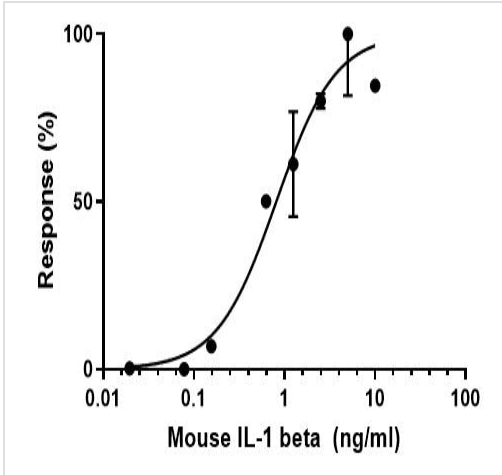
Activation of the IL1B precursor involves a CASP1-catalyzed proteolytic cleavage. Processing and secretion are temporarily associated.

细胞定位

Cytoplasm, cytosol. Lysosome. Secreted, exosome. Cytoplasmic vesicle, autophagosome. Secreted. The precursor is cytosolic. In response to inflammasome-activating signals, such as ATP for NLRP3 inflammasome or bacterial flagellin for NLRC4 inflammasome, cleaved and secreted. IL1B lacks any known signal sequence and the pathway(s) of its secretion is(are) not yet fully understood (PubMed:24201029). On the basis of experimental results, several unconventional secretion mechanisms have been proposed. 1. Secretion via secretory lysosomes: a fraction of CASP1 and IL1B precursor may be incorporated, by a yet undefined mechanism, into secretory lysosomes that undergo Ca(2+)-dependent exocytosis with release of mature IL1B (PubMed:15192144). 2. Secretory autophagy: IL1B-containing autophagosomes may fuse with endosomes or multivesicular bodies (MVBs) and then merge with the plasma membrane releasing soluble IL1B or IL1B-containing exosomes (PubMed:24201029). However, autophagy impacts IL1B production at several levels and its role in secretion is still controversial. 3. Secretion via exosomes: ATP-activation of P2RX7 leads to the formation of MVBs containing exosomes with entrapped IL1B, CASP1 and other inflammasome components. These MVBs undergo exocytosis with the release of exosomes. The release of soluble IL1B occurs after the lysis of exosome membranes (By similarity). 4. Secretion by microvesicle shedding: activation of

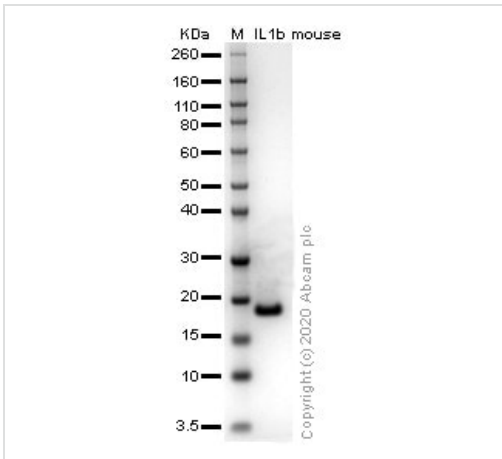
the ATP receptor P2RX7 may induce an immediate shedding of membrane-derived microvesicles containing IL1B and possibly inflammasome components. The cytokine is then released in the extracellular compartment after microvesicle lysis (PubMed:11728343). 5. Release by translocation through permeabilized plasma membrane. This may occur in cells undergoing pyroptosis due to sustained activation of the inflammasome (By similarity). These mechanisms may not be not mutually exclusive.

图片



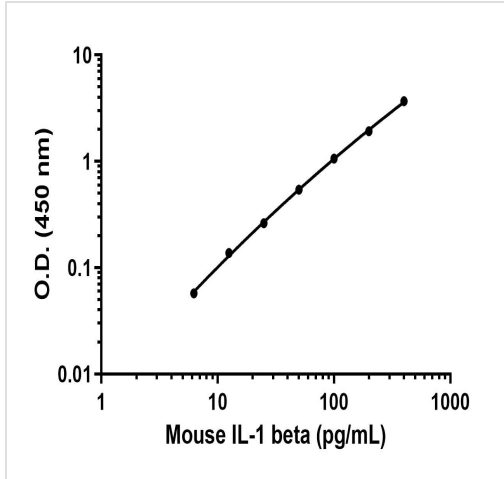
Functional Studies - Recombinant mouse IL-1 beta protein (Active) (ab259421)

Fully biologically active compared to a standard. Determined by dose-dependant stimulation of human TF-1 cells. ED₅₀ is ≤ 0.5294 ng /ml, corresponding to a specific activity of 1.89×10^6 units/mg.



SDS-PAGE - Recombinant mouse IL-1 beta protein (Active) (ab259421)

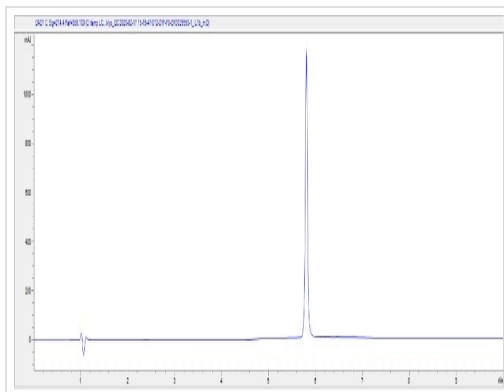
SDS-PAGE analysis of ab259421.



Sandwich ELISA - Recombinant mouse IL-1 beta protein (Active) (ab259421)

Sandwich ELISA - Recombinant mouse IL-1 beta protein standard curve

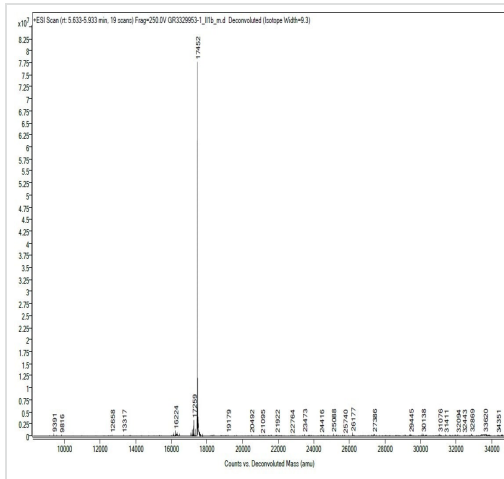
Background subtracted standard curve using Mouse IL-1beta Antibody Pair - BSA and Azide free ([ab241673](#)) and Recombinant mouse IL-1 beta protein (Active) (ab259421) in sandwich ELISA. The ELISA was performed using the components of the corresponding SimpleStep® kit, which uses the same antibody pair with a different formulation and format.



HPLC - Recombinant mouse IL-1 beta protein (Active) (ab259421)

Purity 100%

The spectrum was recorded using a 1260 Infinity II HPLC system with DAD and a MabPac RP column (3.0x100 mm, 4 µm). 5 µL of purified protein was injected and the gradient run from 80 % water:TFA (99.9:0.1 v/v) and 20 % acetonitrile:water:TFA (90:9.9:0.1 v/v/v) to 20 % water:TFA (99.9:0.1 v/v) and 80 % acetonitrile:water:TFA (90:9.9:0.1 v/v/v) within 3 minutes followed by an isocratic step for another 3 min. Flow rate was 0.5 mL/min and the column compartment temperature was 50 °C.



Mass Spectrometry - Recombinant mouse IL-1 beta protein (Active) (ab259421)

M + 0.61 Da (Calc. mass 17451.39).

The spectrum was recorded with a 6545XT AdvanceBio LC/Q-TOF (Agilent Technologies) and a MabPac RP column (42.1x50 mm, 4 µm, Thermo Scientific). 5 µL of purified protein was injected and the gradient run from 85 % water:FA (99.9:0.1 v/v) and 15 % acetonitrile:FA (90:9.9:0.1 v/v/v) to 55 % water:FA (99.9:0.1 v/v) and 45 % acetonitrile:FA (90:9.9:0.1 v/v/v) within 3 minutes followed by an isocratic step for another 2.5 min. Flow rate was 0.4 mL/min and the column compartment temperature was 60 °C. Data was analysed and deconvoluted using the Bioconfirm software (Agilent Technologies).

Please note: All products are "FOR RESEARCH USE ONLY. NOT FOR USE IN DIAGNOSTIC PROCEDURES"

Our Abpromise to you: Quality guaranteed and expert technical support

- Replacement or refund for products not performing as stated on the datasheet
- Valid for 12 months from date of delivery
- Response to your inquiry within 24 hours
- We provide support in Chinese, English, French, German, Japanese and Spanish
- Extensive multi-media technical resources to help you
- We investigate all quality concerns to ensure our products perform to the highest standards

If the product does not perform as described on this datasheet, we will offer a refund or replacement. For full details of the Abpromise, please visit <https://www.abcam.cn/abpromise> or contact our technical team.

Terms and conditions

- Guarantee only valid for products bought direct from Abcam or one of our authorized distributors