

Recombinant mouse HIPK2 protein ab125553

2 图像

描述

产品名称	重组小鼠HIPK2蛋白
生物活性	The specific activity was determined to be 110 nmol/min/mg.
纯度	> 95 % Densitometry.
表达系统	Baculovirus infected Sf9 cells
Accession	Q9QZR5
蛋白长度	Protein fragment
无动物成分	No
性质	Recombinant
种属	Mouse
预测分子量	72 kDa including tags
氨基酸	153 to 564

技术指标

Our [Abpromise guarantee](#) covers the use of **ab125553** in the following tested applications.

The application notes include recommended starting dilutions; optimal dilutions/concentrations should be determined by the end user.

应用	Western blot Functional Studies SDS-PAGE
形式	Liquid
补充说明	ab64311 (Myelin Basic Protein protein) can be utilized as a substrate for assessing kinase activity

制备和贮存

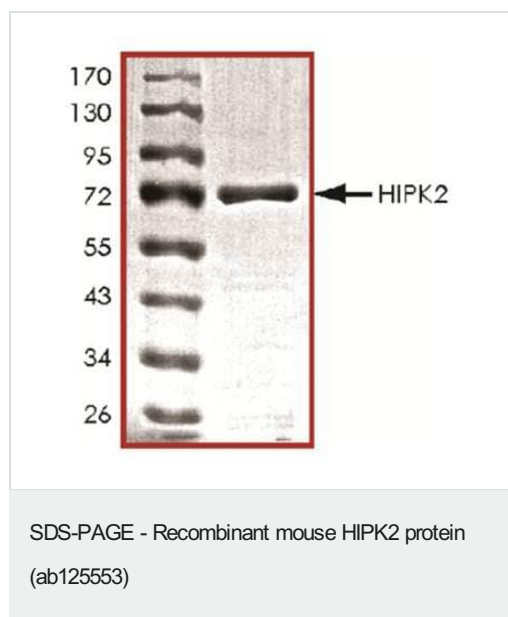
稳定性和存储	Shipped on dry ice. Upon delivery aliquot and store at -80°C. Avoid freeze / thaw cycles. pH: 7.5 Constituents: 0.31% Glutathione, 0.002% PMSF, 0.004% DTT, 0.79% Tris HCl, 0.003% EDTA, 25% Glycerol (glycerin, glycerine), 0.88% Sodium chloride
--------	--

This product is an active protein and may elicit a biological response in vivo, handle with caution.

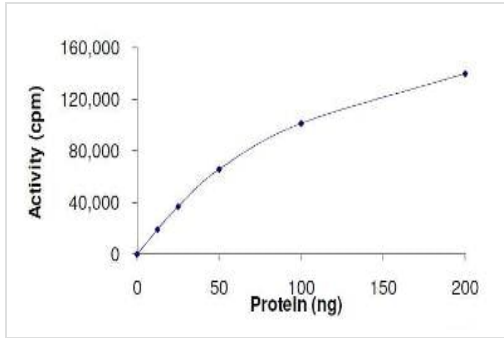
常规信息

功能	Protein kinase acting as a corepressor of several transcription factors, including SMAD1 and POU4F1/Brn3a and probably NK homeodomain transcription factors. Inhibits cell growth and promotes apoptosis. Involved in transcriptional activation of TP53 and TP73. Phosphorylation of TP53 may be mediated by a TP53-HIPK2-AXIN1 complex. In response to TGFB, cooperates with DAXX to activate JNK. Phosphorylates the antiapoptotic factor CTBP1 and promotes its proteasomal degradation. In the Wnt/beta-catenin signaling pathway acts as an intermediate kinase between TAK1 and NLK to promote the proteasomal degradation of MYB (By similarity). Phosphorylates CBX4 upon DNA damage and promotes its E3 SUMO-protein ligase activity. PML, HIPK2 and FBXO3 may act synergically to activate p53/TP53-dependent transactivation.
组织特异性	Highly expressed in heart, muscle and kidney. Weakly expressed in a ubiquitous way. Down-regulated in several thyroid and breast tumors.
序列相似性	Belongs to the protein kinase superfamily. CMGC Ser/Thr protein kinase family. HIPK subfamily. Contains 1 protein kinase domain.
翻译后修饰	Phosphorylated on tyrosines (By similarity). Autophosphorylated. Sumoylated. When conjugated it is directed to nuclear speckles. Desumoylated by SENP1 (By similarity). Sumoylation on Lys-32 is promoted by the E3 SUMO-protein ligase CBX4. Ubiquitinated by FBXO3, leading to rapid proteasome-dependent degradation. This degradation, but not ubiquitination, is prevented in the presence of PML.
细胞定位	Nucleus > PML body. Cytoplasm. Concentrated in PML/POD/ND10 nuclear bodies. Small amounts are cytoplasmic.

图片



ab125553 by SDS-PAGE



Kinase activity of ab125553.

Functional Studies - Recombinant mouse HIPK2 protein (ab125553)

Please note: All products are "FOR RESEARCH USE ONLY. NOT FOR USE IN DIAGNOSTIC PROCEDURES"

Our Abpromise to you: Quality guaranteed and expert technical support

- Replacement or refund for products not performing as stated on the datasheet
- Valid for 12 months from date of delivery
- Response to your inquiry within 24 hours
- We provide support in Chinese, English, French, German, Japanese and Spanish
- Extensive multi-media technical resources to help you
- We investigate all quality concerns to ensure our products perform to the highest standards

If the product does not perform as described on this datasheet, we will offer a refund or replacement. For full details of the Abpromise, please visit <https://www.abcam.cn/abpromise> or contact our technical team.

Terms and conditions

- Guarantee only valid for products bought direct from Abcam or one of our authorized distributors