

Recombinant mouse GAPDH protein (Active) ab222428

1 图像

描述	
产品名称	重组小鼠GAPDH蛋白(Active)
生物活性	Specific activity is > 40 units/mg, and is defined as the amount of enzyme that converts 1.0 μmole of glyceraldehyde-3-phosphate to 1,3-Bisphosphoglycerate per minute at pH 8.5 at 37°C.
纯度	> 95 % SDS-PAGE. ab222428 was purified using conventional chromatography techniques.
表达系统	Escherichia coli
Accession	<u>P16858</u>
蛋白长度	Full length protein
无动物成分	No
性质	Recombinant
种属	Mouse
序列	MGSSHHHHHHSSGLVPRGSHMGSMVKVG VNGFGRIGRLVTRA AICSGKVE IVAINDPFIDLNYVMFYDSTHGKFNGTVKAENGKLVING KPITIFQE RDPTNIKWGEAGAEYVVESTGVFTTMEKAG AHLKGGAKRVII SAPSADAP MFVMGVNHEKYDNSLKIVSNASCTTNCLAPLAKVIHDNFGIV EGLMTTVH AITATQKTVDGPGSKLWRDGRGAAQNIIPASTGAAKAVGKVI PELNGKLT GMAFRVPTPNVSVDLTCRLEKPAKYDDIKKVVKQASEGPLK GILGYTED QVVS CDFNSNSHSSTFDAGAGIALNDNFVKLISWYDNEYGYS NRVVDLMA YMASKE
预测分子量	38 kDa including tags
氨基酸	1 to 333
标签	His tag N-Terminus
额外的序列信息	NP_032110.
技术指标	

Our **Abpromise guarantee** covers the use of **ab222428** in the following tested applications.

The application notes include recommended starting dilutions; optimal dilutions/concentrations should be determined by the end user.

应用	Mass Spectrometry
	SDS-PAGE
	Functional Studies
质谱法	MALDI-TOF
形式	Liquid

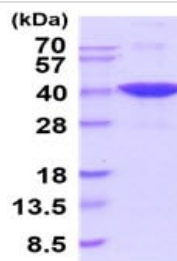
制备和贮存

稳定性和存储	Shipped at 4°C. Store at +4°C short term (1-2 weeks). Upon delivery aliquot. Store at -20°C or -80°C. Avoid freeze / thaw cycle.
	pH: 7.40
	Constituents: 0.02% DTT, 20% Glycerol (glycerin, glycerine), PBS
	This product is an active protein and may elicit a biological response in vivo, handle with caution.

常规信息

功能	Has both glyceraldehyde-3-phosphate dehydrogenase and nitrosylase activities, thereby playing a role in glycolysis and nuclear functions, respectively. Participates in nuclear events including transcription, RNA transport, DNA replication and apoptosis. Nuclear functions are probably due to the nitrosylase activity that mediates cysteine S-nitrosylation of nuclear target proteins such as SIRT1, HDAC2 and PRKDC (By similarity). Glyceraldehyde-3-phosphate dehydrogenase is a key enzyme in glycolysis that catalyzes the first step of the pathway by converting D-glyceraldehyde 3-phosphate (G3P) into 3-phospho-D-glyceroyl phosphate.
通路	Carbohydrate degradation; glycolysis; pyruvate from D-glyceraldehyde 3-phosphate: step 1/5.
序列相似性	Belongs to the glyceraldehyde-3-phosphate dehydrogenase family.
翻译后修饰	S-nitrosylation of Cys-152 leads to interaction with SIAH1, followed by translocation to the nucleus. ISGylated.
细胞定位	Cytoplasm > cytosol. Nucleus. Cytoplasm > perinuclear region. Membrane. Translocates to the nucleus following S-nitrosylation and interaction with SIAH1, which contains a nuclear localization signal (By similarity). Postnuclear and Perinuclear regions.

图片



15% SDS-PAGE analysis of 3 µg ab222428.

SDS-PAGE - Recombinant mouse GAPDH protein
(Active) (ab222428)

Please note: All products are "FOR RESEARCH USE ONLY. NOT FOR USE IN DIAGNOSTIC PROCEDURES"

Our Abpromise to you: Quality guaranteed and expert technical support

- Replacement or refund for products not performing as stated on the datasheet
- Valid for 12 months from date of delivery
- Response to your inquiry within 24 hours
- We provide support in Chinese, English, French, German, Japanese and Spanish
- Extensive multi-media technical resources to help you
- We investigate all quality concerns to ensure our products perform to the highest standards

If the product does not perform as described on this datasheet, we will offer a refund or replacement. For full details of the Abpromise, please visit <https://www.abcam.cn/abpromise> or contact our technical team.

Terms and conditions

- Guarantee only valid for products bought direct from Abcam or one of our authorized distributors