

Recombinant Mouse ERK2 (mutated K52R) protein ab62568

1 图像

描述

产品名称	重组小鼠ERK2 (mutated K52R)蛋白
纯度	> 90 % SDS-PAGE.
表达系统	Escherichia coli
Accession	<u>NM_0011949</u>
蛋白长度	Full length protein
无动物成分	No
性质	Recombinant
种属	Mouse
预测分子量	42 kDa
修饰	mutated K52R
标签	His tag N-Terminus

技术指标

Our **Abpromise guarantee** covers the use of **ab62568** in the following tested applications.

The application notes include recommended starting dilutions; optimal dilutions/concentrations should be determined by the end user.

应用	Functional Studies
形式	Liquid
补充说明	The K52 R mutation prevents ATP binding, making the kinase inactive. ab62568 is useful as a substrate for MEK1.

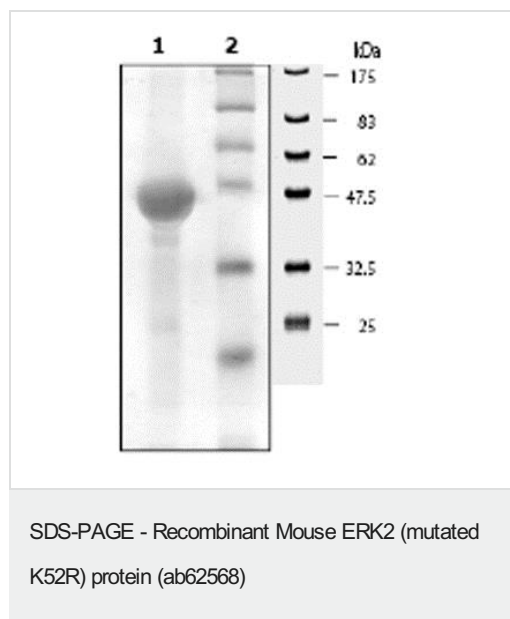
制备和贮存

稳定性和存储	Shipped on Dry Ice. Upon delivery aliquot. Store at -80°C. Avoid freeze / thaw cycle. pH: 8.00 Preservative: 0.85% Imidazole Constituents: 0.0462% (R*,R*)-1,4-Dimercaptobutan-2,3-diol, 0.71% Tris HCl, 10% Glycerol (glycerin, glycerine), 0.72% Sodium chloride, 0.02% Potassium chloride
--------	---

常规信息

功能	<p>Involved in both the initiation and regulation of meiosis, mitosis, and postmitotic functions in differentiated cells by phosphorylating a number of transcription factors such as ELK1. Phosphorylates EIF4EBP1; required for initiation of translation. Phosphorylates microtubule-associated protein 2 (MAP2). Phosphorylates SPZ1 (By similarity). Phosphorylates heat shock factor protein 4 (HSF4) and ARHGEF2.</p> <p>Acts as a transcriptional repressor. Binds to a [GC]AAA[GC] consensus sequence. Repress the expression of interferon gamma-induced genes. Seems to bind to the promoter of CCL5, DMP1, IFI1, IFITM1, IRF7, IRF9, LAMP3, OAS1, OAS2, OAS3 and STAT1. Transcriptional activity is independent of kinase activity.</p>
序列相似性	<p>Belongs to the protein kinase superfamily. CMGC Ser/Thr protein kinase family. MAP kinase subfamily.</p> <p>Contains 1 protein kinase domain.</p>
结构域	<p>The TXY motif contains the threonine and tyrosine residues whose phosphorylation activates the MAP kinases.</p>
翻译后修饰	<p>Dually phosphorylated on Thr-185 and Tyr-187, which activates the enzyme. Dephosphorylated by PTPRJ at Tyr-187.</p>
细胞定位	<p>Nucleus.</p>

图片



ab62568 on 10% SDS-PAGE, Coomassie staining.

Lane 1 ab62568.

Lane 2 Protein marker.

Please note: All products are "FOR RESEARCH USE ONLY. NOT FOR USE IN DIAGNOSTIC PROCEDURES"

Our Abpromise to you: Quality guaranteed and expert technical support

- Replacement or refund for products not performing as stated on the datasheet
- Valid for 12 months from date of delivery
- Response to your inquiry within 24 hours

- We provide support in Chinese, English, French, German, Japanese and Spanish
- Extensive multi-media technical resources to help you
- We investigate all quality concerns to ensure our products perform to the highest standards

If the product does not perform as described on this datasheet, we will offer a refund or replacement. For full details of the Abpromise, please visit <https://www.abcam.cn/abpromise> or contact our technical team.

Terms and conditions

- Guarantee only valid for products bought direct from Abcam or one of our authorized distributors