

Recombinant mouse Eph receptor B1/NET protein ab56257

4 图像

描述

产品名称	重组小鼠Eph receptor B1/NET蛋白
生物活性	Specific Activity: 143 nmol/min/mg.
纯度	> 90 % SDS-PAGE. Source: Sf9 insect cells. Affinity purified.
表达系统	Baculovirus infected Sf9 cells
蛋白长度	Protein fragment
无动物成分	No
性质	Recombinant
种属	Mouse
氨基酸	591 to 984

技术指标

Our **Abpromise guarantee** covers the use of **ab56257** in the following tested applications.

The application notes include recommended starting dilutions; optimal dilutions/concentrations should be determined by the end user.

应用	Functional Studies SDS-PAGE
形式	Liquid
补充说明	ab204877 (Poly (4:1 Glu, Tyr) peptide) can be utilized as a substrate for assessing kinase activity. Product previously known as Recombinant mouse Eph receptor B1 protein.

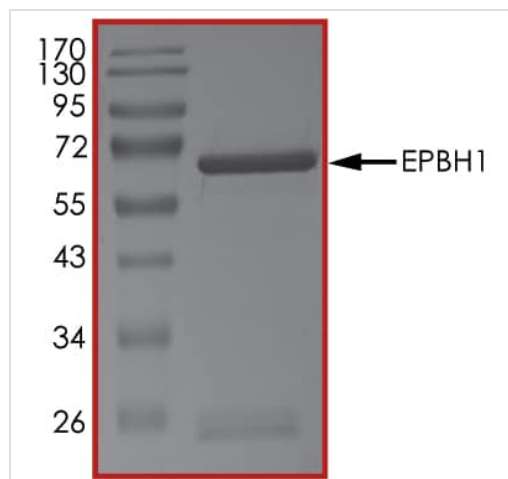
制备和贮存

稳定性和存储	Shipped on dry ice. Upon delivery aliquot and store at -80°C. Avoid freeze / thaw cycles. pH: 7.50 Constituents: 0.0038% EGTA, 0.00174% PMSF, 0.00154% DTT, 0.79% Tris HCl, 0.00292% EDTA, 25% Glycerol (glycerin, glycerine), 0.87% Sodium chloride This product is an active protein and may elicit a biological response in vivo, handle with caution.
--------	--

常规信息

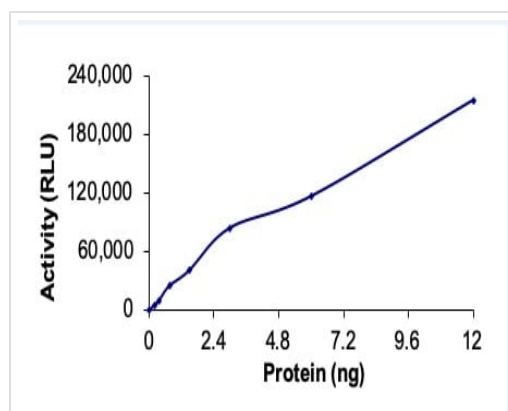
功能	Receptor for members of the ephrin-B family. Binds to ephrin-B1, -B2 and -B3. Binding with the guidance cue ephrin-B2 at the optic chiasm midline redirect ventrotemporal (VT) retinal ganglion cells (RGCs) axons ipsilaterally. May be involved in cell-cell interactions in the nervous system.
组织特异性	Preferentially expressed in brain.
序列相似性	Belongs to the protein kinase superfamily. Tyr protein kinase family. Ephrin receptor subfamily. Contains 2 fibronectin type-III domains. Contains 1 protein kinase domain. Contains 1 SAM (sterile alpha motif) domain.
细胞定位	Membrane.

图片



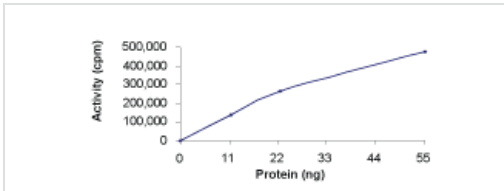
SDS PAGE analysis of ab56257.

SDS-PAGE - Recombinant mouse Eph receptor B1/NET protein (ab56257)



The specific activity of Eph receptor B1/NET (ab56257) was determined to be 82 nmol /min/mg as per activity assay protocol.

Functional Studies - Recombinant mouse Eph receptor B1/NET protein (ab56257)

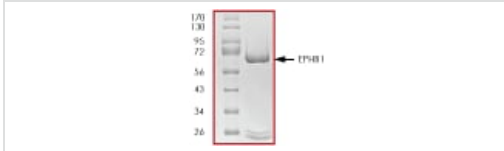


Kinase Assay Activity Plot.

ab56257 at 0.1µg/µl.

Specific activity determined as 143 nmol/min/mg.

Functional Studies - Recombinant mouse Eph receptor B1/NET protein (ab56257)



ab56257 on SDS-PAGE, MW 62kDa.

SDS-PAGE - Recombinant mouse Eph receptor B1/NET protein (ab56257)

Please note: All products are "FOR RESEARCH USE ONLY. NOT FOR USE IN DIAGNOSTIC PROCEDURES"

Our Abpromise to you: Quality guaranteed and expert technical support

- Replacement or refund for products not performing as stated on the datasheet
- Valid for 12 months from date of delivery
- Response to your inquiry within 24 hours
- We provide support in Chinese, English, French, German, Japanese and Spanish
- Extensive multi-media technical resources to help you
- We investigate all quality concerns to ensure our products perform to the highest standards

If the product does not perform as described on this datasheet, we will offer a refund or replacement. For full details of the Abpromise, please visit <https://www.abcam.cn/abpromise> or contact our technical team.

Terms and conditions

- Guarantee only valid for products bought direct from Abcam or one of our authorized distributors