

Recombinant mouse EGF protein ab72994

1 References [1 图像](#)

描述

产品名称	重组小鼠EGF蛋白
生物活性	The ED50, calculated by the dose-dependant proliferation of murine BALB/c 3T3 cells (measured by 3H-thymidine uptake) is < 0.1 ng/ml.
纯度	> 95 % SDS-PAGE. Purity is greater than 97% as determined by reducing and non-reducing SDS-PAGE and analytical HPLC.
表达系统	Escherichia coli
蛋白长度	Full length protein
无动物成分	No
性质	Recombinant
种属	Mouse
序列	NSYPGCPSSY DGYCLNGGVC MHIESLDSYT CNCVIGYSGD RCQTRDLRWW ELR

技术指标

Our **Abpromise guarantee** covers the use of **ab72994** in the following tested applications.

The application notes include recommended starting dilutions; optimal dilutions/concentrations should be determined by the end user.

应用	SDS-PAGE Functional Studies
形式	Lyophilized

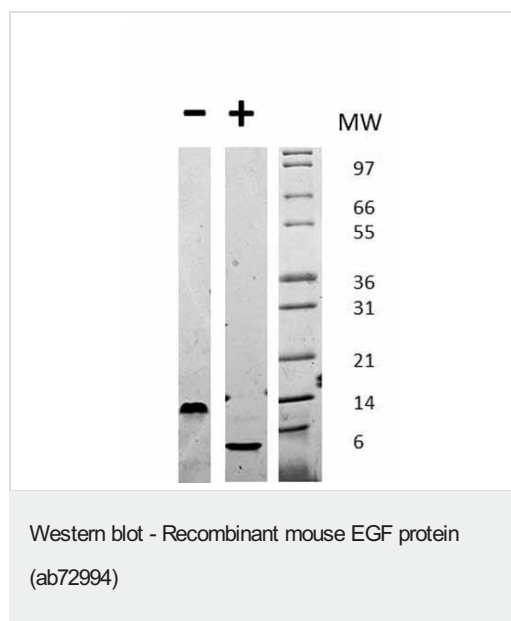
制备和贮存

稳定性和存储	Shipped at 4°C. Store at -20°C. Stable for 12 months at -20°C. This product is an active protein and may elicit a biological response in vivo, handle with caution.
复溶	Reconstitute with sterile water at a concentration of 0.1-0.5 mg/ml, which can be further diluted into other aqueous solutions. Reconstituted material should be aliquoted and frozen at -20°C. It is recommended to add a carrier protein (0.1% HSA or BSA) for long term storage.

常规信息

功能	EGF stimulates the growth of various epidermal and epithelial tissues in vivo and in vitro and of some fibroblasts in cell culture. Magnesiotropic hormone that stimulates magnesium reabsorption in the renal distal convoluted tubule via engagement of EGFR and activation of the magnesium channel TRPM6. Can induce neurite outgrowth in motoneurons of the pond snail <i>Lymnaea stagnalis</i> in vitro (PubMed:10964941).
组织特异性	Expressed in kidney, salivary gland, cerebrum and prostate.
疾病相关	Hypomagnesemia 4
序列相似性	Contains 9 EGF-like domains. Contains 9 LDL-receptor class B repeats.
翻译后修饰	O-glycosylated with core 1-like and core 2-like glycans. It is uncertain if Ser-954 or Thr-955 is O-glycosylated. The modification here shows glycan heterogeneity: HexHexNAc (major) and Hex2HexNAc2 (minor).
细胞定位	Membrane.

图片



ab72994 used in Western Blot. Figure: 1 ug in each lane (-) non-reducing conditions and (+) reducing conditions in a 4-20% Tris-Glycine gel stained with Coomassie Blue. Mouse EGF is predicted to be a homodimer with a MW of 12.4 kDa.

Please note: All products are "FOR RESEARCH USE ONLY. NOT FOR USE IN DIAGNOSTIC PROCEDURES"

Our Abpromise to you: Quality guaranteed and expert technical support

- Replacement or refund for products not performing as stated on the datasheet
- Valid for 12 months from date of delivery
- Response to your inquiry within 24 hours
- We provide support in Chinese, English, French, German, Japanese and Spanish
- Extensive multi-media technical resources to help you
- We investigate all quality concerns to ensure our products perform to the highest standards

If the product does not perform as described on this datasheet, we will offer a refund or replacement. For full details of the Abpromise, please visit <https://www.abcam.cn/abpromise> or contact our technical team.

Terms and conditions

- Guarantee only valid for products bought direct from Abcam or one of our authorized distributors