

Recombinant mouse C10 protein ab9898

1 图像

描述

产品名称	重组小鼠C10蛋白
纯度	> 99 % SDS-PAGE. Sterile filtered Greater than 99% pure by HPLC analyses. Endotoxin level is less than 0.1 ng per g (1EU/g).
表达系统	Escherichia coli
Accession	<u>P27784</u>
蛋白长度	Full length protein
无动物成分	No
性质	Recombinant
种属	Mouse
序列	GLIQEIEKEDRRYNPPIIHQGFQDTSSDCCFSYATQIPCKRF IYYFPTSG GCIKPGIIFISRRGTQVCADPSDRRVQRCLSTLKQGPRSGNK VIA
预测分子量	11 kDa
氨基酸	22 to 116

技术指标

Our **Abpromise guarantee** covers the use of **ab9898** in the following tested applications.

The application notes include recommended starting dilutions; optimal dilutions/concentrations should be determined by the end user.

应用	Functional Studies SDS-PAGE Western blot
形式	Lyophilized
补充说明	The biological activity of this product was determined by its ability to chemoattract Balb/c mouse spleen MNCs using a concentration of 10-100ng/ml.

制备和贮存

稳定性和存储 Shipped at 4°C. Store at +4°C short term (1-2 weeks). Upon delivery aliquot. Store at -20°C or -

80°C. Avoid freeze / thaw cycle.

This product is an active protein and may elicit a biological response in vivo, handle with caution.

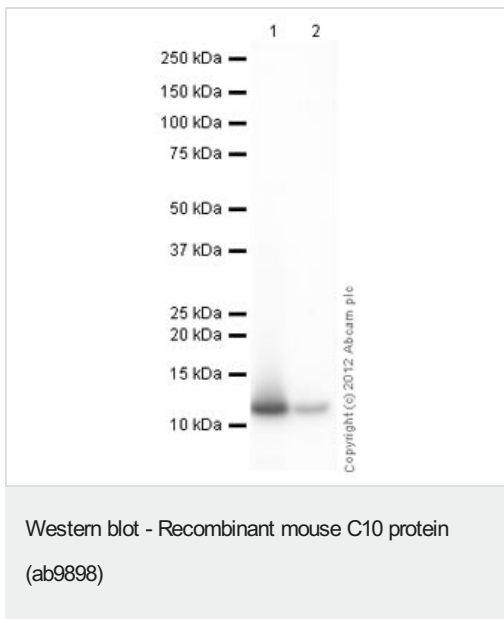
复溶 For lot specific reconstitution information please contact our Scientific Support Team.

常规信息

相关性 CCL6 (C10) is a small cytokine belonging to the CC chemokine family that has only been identified in rodents. It is a potent chemoattractant of macrophages, but it can also attract B cells, CD4+ lymphocytes and eosinophils. In mice, CCL6 is expressed in cells from neutrophil and macrophage lineages, and can be induced under conditions suitable for myeloid cell differentiation. CCL6 (C10) was originally identified as a transcript that is induced in bone marrow cells upon stimulation of GM-CSF. The cell surface receptor for CCL6 is believed to be the chemokine receptor CCR1.

细胞定位 Secreted

图片



All lanes : Anti-C10 antibody ([ab9897](#)) at 0.2 µg/ml

Lane 1 : Recombinant mouse C10 protein (ab9898) at 0.1 µg

Lane 2 : Recombinant mouse C10 protein (ab9898) at 0.01 µg

Secondary

All lanes : Goat Anti-Rabbit IgG H&L (HRP) preadsorbed ([ab97080](#)) at 1/5000 dilution

Developed using the ECL technique.

Performed under reducing conditions.

Exposure time: 1 minute

Please note: All products are "FOR RESEARCH USE ONLY. NOT FOR USE IN DIAGNOSTIC PROCEDURES"

Our Abpromise to you: Quality guaranteed and expert technical support

- Replacement or refund for products not performing as stated on the datasheet
- Valid for 12 months from date of delivery
- Response to your inquiry within 24 hours
- We provide support in Chinese, English, French, German, Japanese and Spanish
- Extensive multi-media technical resources to help you
- We investigate all quality concerns to ensure our products perform to the highest standards

If the product does not perform as described on this datasheet, we will offer a refund or replacement. For full details of the Abpromise, please visit <https://www.abcam.cn/abpromise> or contact our technical team.

Terms and conditions

- Guarantee only valid for products bought direct from Abcam or one of our authorized distributors