

Recombinant KIR2DL3 protein ab51215

1 图像

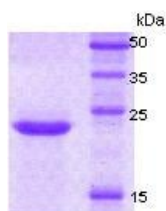
描述	
产品名称	重组KIR2DL3蛋白
纯度	> 95 % SDS-PAGE. ab51215 was purified by FPLC gel-filtration chromatography.
表达系统	Escherichia coli
蛋白长度	Protein fragment
无动物成分	No
性质	Recombinant

技术指标	
Our Abpromise guarantee covers the use of ab51215 in the following tested applications.	
The application notes include recommended starting dilutions; optimal dilutions/concentrations should be determined by the end user.	
应用	SDS-PAGE
形式	Liquid

制备和贮存	
稳定性和存储	Shipped at 4°C. Upon delivery aliquot and store at -20°C. Avoid freeze / thaw cycles. pH: 7.50 Constituent: 0.316% Tris HCl

常规信息	
功能	Receptor on natural killer (NK) cells for HLA-C alleles (HLA-Cw1, HLA-Cw3 and HLA-Cw7). Inhibits the activity of NK cells thus preventing cell lysis.
序列相似性	Belongs to the immunoglobulin superfamily. Contains 2 Ig-like C2-type (immunoglobulin-like) domains.
细胞定位	Cell membrane.

图片	
----	--



14% SDS-PAGE gel loaded with ab51215, recombinant human KIR2DL3 protein (extracellular domain).
Predicted molecular weight 22.2 kDa

SDS-PAGE - Recombinant KIR2DL3 protein
(ab51215)

Please note: All products are "FOR RESEARCH USE ONLY. NOT FOR USE IN DIAGNOSTIC PROCEDURES"

Our Abpromise to you: Quality guaranteed and expert technical support

- Replacement or refund for products not performing as stated on the datasheet
- Valid for 12 months from date of delivery
- Response to your inquiry within 24 hours
- We provide support in Chinese, English, French, German, Japanese and Spanish
- Extensive multi-media technical resources to help you
- We investigate all quality concerns to ensure our products perform to the highest standards

If the product does not perform as described on this datasheet, we will offer a refund or replacement. For full details of the Abpromise, please visit <https://www.abcam.cn/abpromise> or contact our technical team.

Terms and conditions

- Guarantee only valid for products bought direct from Abcam or one of our authorized distributors