

### Recombinant human ZIP Kinase protein ab63192

#### 5 图像

#### 描述

产品名称	重组人ZIP Kinase蛋白
生物活性	Specific activity: 37 nmol/min/mg.
纯度	> 80 % Densitometry. Affinity purified.
表达系统	Baculovirus infected Sf9 cells
Accession	<b><u>O43293</u></b>
蛋白长度	Full length protein
无动物成分	No
性质	Recombinant
种属	Human
氨基酸	1 to 454
标签	GST tag N-Terminus

#### 技术指标

Our **Abpromise guarantee** covers the use of **ab63192** in the following tested applications.

The application notes include recommended starting dilutions; optimal dilutions/concentrations should be determined by the end user.

应用	SDS-PAGE Functional Studies
形式	Liquid
补充说明	<b><u>ab64311</u></b> (Myelin Basic Protein protein) can be utilized as a substrate for assessing kinase activity

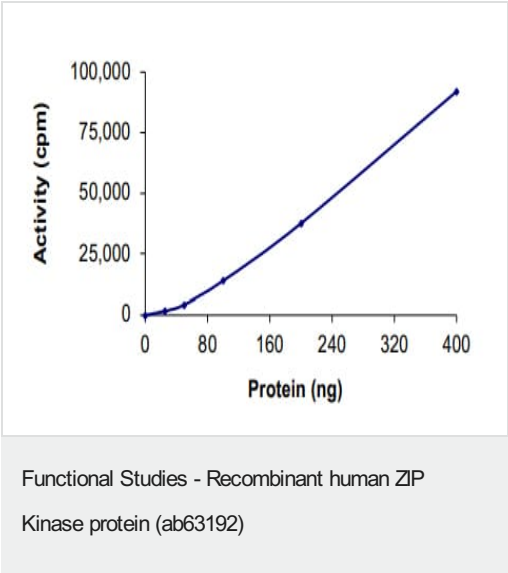
#### 制备和贮存

稳定性和存储	Shipped on dry ice. Upon delivery aliquot and store at -80°C. Avoid freeze / thaw cycles. pH: 7.50 Constituents: 0.0038% EGTA, 0.00174% PMSF, 0.00385% DTT, 0.79% Tris HCl, 0.00292% EDTA, 25% Glycerol (glycerin, glycerine), 0.87% Sodium chloride This product is an active protein and may elicit a biological response in vivo, handle with caution.
--------	--

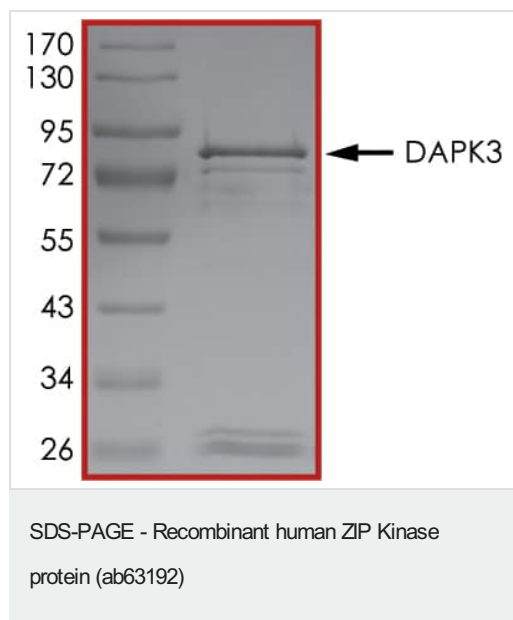
常规信息

功能	Serine/threonine kinase which acts as a positive regulator of apoptosis. Phosphorylates histone H3 on 'Thr-11' at centromeres during mitosis. Regulates myosin light chain phosphatase through phosphorylation of MYPT1 thereby regulating the assembly of the actin cytoskeleton, cell migration, invasiveness of tumor cells, smooth muscle contraction and neurite outgrowth. Involved in the formation of promyelocytic leukemia protein nuclear body (PML-NB), one of many subnuclear domains in the eukaryotic cell nucleus, and which is involved in oncogenesis and viral infection.
序列相似性	Belongs to the protein kinase superfamily. CAMK Ser/Thr protein kinase family. DAP kinase subfamily. Contains 1 protein kinase domain.
翻译后修饰	Ubiquitinated. Ubiquitination mediated by the UBE2D3 E3 ligase does not lead to proteasomal degradation, but influences promyelocytic leukemia protein nuclear bodies (PML-NBs) formation in the nucleus. Autophosphorylated. Phosphorylated by ROCK1.
细胞定位	Nucleus. Cytoplasm. Nucleus > PML body. Relocates to the cytoplasm on binding PAWR where the complex appears to interact with actin filaments (By similarity). Localizes to promyelocytic leukemia protein nuclear bodies (PML-NBs). Associates to centromeres from prophase to anaphase.

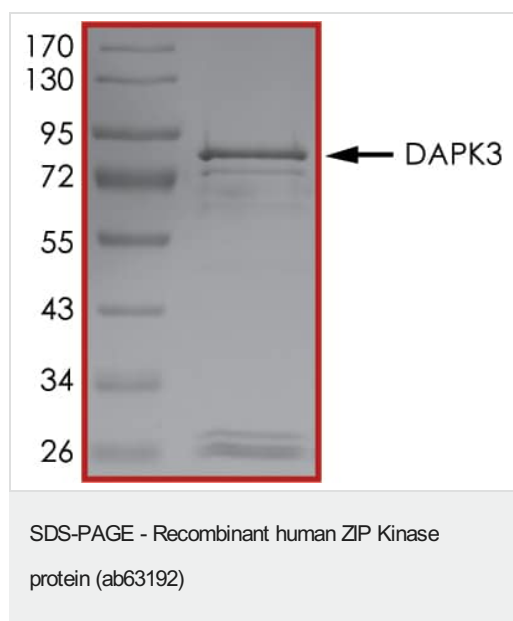
图片



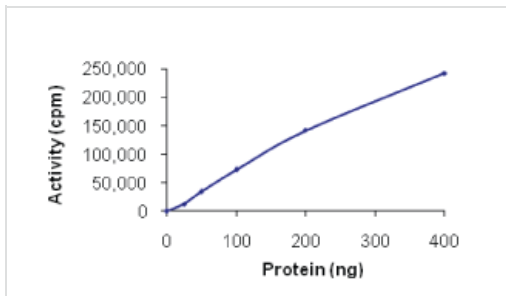
The specific activity of ZIP Kinase (ab63192) was determined to be 32 nmol/min/mg as per activity assay protocol



SDS PAGE analysis of ab63192

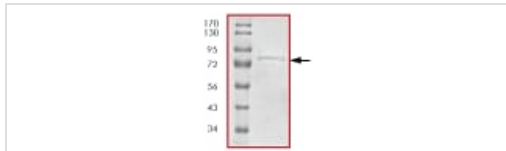


SDS PAGE analysis of ab63192



Sample Kinase Activity Plot.

Functional Studies - Recombinant human ZIP  
Kinase protein (ab63192)



ab63192 on SDS-PAGE. Molecular Weight: ~79 kDa.

SDS-PAGE - Recombinant human ZIP Kinase  
protein (ab63192)

**Please note:** All products are "FOR RESEARCH USE ONLY. NOT FOR USE IN DIAGNOSTIC PROCEDURES"

### Our Abpromise to you: Quality guaranteed and expert technical support

- Replacement or refund for products not performing as stated on the datasheet
- Valid for 12 months from date of delivery
- Response to your inquiry within 24 hours
- We provide support in Chinese, English, French, German, Japanese and Spanish
- Extensive multi-media technical resources to help you
- We investigate all quality concerns to ensure our products perform to the highest standards

If the product does not perform as described on this datasheet, we will offer a refund or replacement. For full details of the Abpromise, please visit <https://www.abcam.cn/abpromise> or contact our technical team.

### Terms and conditions

- Guarantee only valid for products bought direct from Abcam or one of our authorized distributors