

Recombinant Human WDR68 protein (denatured) ab111624

1 图像

| | |
|-----------|---|
| 描述 | |
| 产品名称 | 重组人WDR68蛋白(denatured) |
| 纯度 | > 90 % SDS-PAGE. ab111624 was denatured using detergent during conventional chromatography purification process. |
| 表达系统 | Escherichia coli |
| Accession | P61962 |
| 蛋白长度 | Protein fragment |
| 无动物成分 | No |
| 性质 | Recombinant |
| 种属 | Human |
| 序列 | MGSSHHHHHHSSGLVPRGSHM VYAMNWSVRPDKRFRLLALG SFVEEYNNKV QLVGLDEESSEFICRNTFDHPYPTTKLMWIPDTKGVYPDLLA TSGDYLRV WRVGETETRLECLLNNNKNSDFCAPLTSFDWNEVDPYLLGTS SIDTTCTI WGLETGQVLGRVNLVSGHVKTQLIAHDKEVYDIAFSRAGGGR DMFASVGA DGSVRMFDLRHLEHSTIIYEDPQHHPLLRLCWNKQDPNYLAT MAMDGMEV VILDVRVPCTPVARLNNHRACVNGIAWAPHSSCHICTAADDH QALIWD |
| 预测分子量 | 34 kDa |
| 氨基酸 | 19 to 295 |
| 标签 | His tag N-Terminus |
| 描述 | 重组人WDR68蛋白 |

技术指标

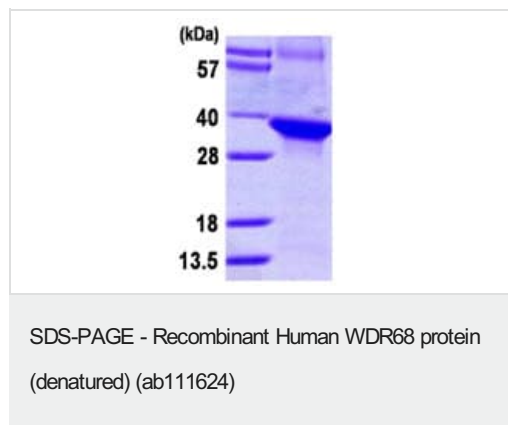
Our **Abpromise guarantee** covers the use of **ab111624** in the following tested applications.

The application notes include recommended starting dilutions; optimal dilutions/concentrations should be determined by the end user.

| | |
|----|----------|
| 应用 | SDS-PAGE |
|----|----------|

| | |
|--------|--|
| 形式 | Liquid |
| 制备和贮存 | |
| 稳定性和存储 | <p>Shipped at 4°C. Upon delivery aliquot and store at -20°C or -80°C. Avoid repeated freeze / thaw cycles.</p> <p>pH: 8.00</p> <p>Constituents: 2.4% Urea, 0.02% DTT, 0.32% Tris HCl</p> |
| 常规信息 | |
| 功能 | Involved in craniofacial development. Acts upstream of the EDN1 pathway and is required for formation of the upper jaw equivalent, the palatoquadrate. The activity required for EDN1 pathway function differs between the first and second arches (By similarity). Associates with DIAPH1 and controls GLI1 transcriptional activity. Could be involved in normal and disease skin development. May function as a substrate receptor for CUL4-DDB1 E3 ubiquitin-protein ligase complex. |
| 通路 | Protein modification; protein ubiquitination. |
| 序列相似性 | <p>Belongs to the WD repeat DCAF7 family.</p> <p>Contains 4 WD repeats.</p> |
| 细胞定位 | Cytoplasm. Nucleus. Overexpression of DIAHP1 or active RHOA causes translocation from the nucleus to cytoplasm. |

图片



15% SDS-PAGE showing ab111624 at approximately 33.6kDa (3μg).

Please note: All products are "FOR RESEARCH USE ONLY. NOT FOR USE IN DIAGNOSTIC PROCEDURES"

Our Abpromise to you: Quality guaranteed and expert technical support

- Replacement or refund for products not performing as stated on the datasheet
- Valid for 12 months from date of delivery
- Response to your inquiry within 24 hours
- We provide support in Chinese, English, French, German, Japanese and Spanish

- Extensive multi-media technical resources to help you
- We investigate all quality concerns to ensure our products perform to the highest standards

If the product does not perform as described on this datasheet, we will offer a refund or replacement. For full details of the Abpromise, please visit <https://www.abcam.cn/abpromise> or contact our technical team.

Terms and conditions

- Guarantee only valid for products bought direct from Abcam or one of our authorized distributors