

Recombinant human VCAM1 protein (His tag) ab219443

1 图像

描述		
产品名称	重组人VCAM1蛋白(His tag)	
生物活性	Measured by the ability of the immobilized protein to support the adhesion of U937 Human histiocytic lymphoma cells. When cells are added to VCAM1 coated plates (VCAM1 at 10ug/ml), more than 70% of the cells are adhered.	
纯度	> 90 % SDS-PAGE. Affinity purified	
内毒素水平	< 1.000 Eu/μg	
表达系统	Baculovirus infected insect cells	
Accession	<u>P19320</u>	
蛋白长度	Protein fragment	
无动物成分	No	
性质	Recombinant	
种属	Human	
序列	ADPEFFKIET TPESRYLAQI GDSVSLTCST TGCESPFFSW RTQIDSPLNG KVTNEGTTST LTMNPVSFGN EHSYLCTATC ESRKLEKGIQ VEIYSFPKDP EIHLSGPLEA GKPI TVKCSV ADVYPFDRLE IDLLKGDHLM KSQEFLEDAD RKSLETKSLE VTFTPVIEDI GKVLVCRAKL HIDEMDSVPT VRQAVKELQV YISPKNTVIS VNPSTKLQEG GSVTMTCSSE GLPAPEIFWS KKLDNGNLQH LSGNATLTLI AMRMEDSGIY VCEGVNLIGK NRKEVELIVQ EKPFTVEISP GPRIAAQIGD SVMLTCSVMG CESPSFSWRT QIDSPLSGKV RSEGTNSTLT LSPVSFENEH SYLCTVTCGH KKLEKGIQVE LYSFPRDPEI EMSGGLVNGS SVTVSCKVPS VYPLDRLEIE LLKGETILEN IEFLEDTDMK SLENKSLEMT FIPTIEDTGK ALVCQAKLHI DDMEFEPKQR QSTQTLYVNV APRDTTVLVS PSSILEEGSS VNMTCLSQGF PAPKILWSRQ LPNGELQPLS ENATLTLIST	
预测分子量	76 kDa including tags	

氨基酸	25 to 698
标签	His tag C-Terminus
额外的序列信息	(NP_001069).

技术指标

Our **Abpromise guarantee** covers the use of **ab219443** in the following tested applications.

The application notes include recommended starting dilutions; optimal dilutions/concentrations should be determined by the end user.

应用	Functional Studies
	SDS-PAGE
形式	Liquid

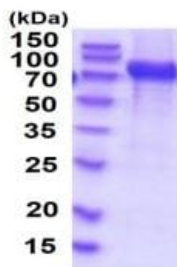
制备和贮存

稳定性和存储	Shipped at 4°C. Store at +4°C short term (1-2 weeks). Upon delivery aliquot. Store at -20°C or -80°C. Avoid freeze / thaw cycle.
	pH: 7.40
	Constituents: 90% PBS, 10% Glycerol (glycerin, glycerine)
	This product is an active protein and may elicit a biological response in vivo, handle with caution.

常规信息

功能	Important in cell-cell recognition. Appears to function in leukocyte-endothelial cell adhesion. Interacts with the beta-1 integrin VLA4 on leukocytes, and mediates both adhesion and signal transduction. The VCAM1/VLA4 interaction may play a pathophysiologic role both in immune responses and in leukocyte emigration to sites of inflammation.
组织特异性	Expressed on inflamed vascular endothelium, as well as on macrophage-like and dendritic cell types in both normal and inflamed tissue.
序列相似性	Contains 7 Ig-like C2-type (immunoglobulin-like) domains.
结构域	Either the first or the fourth Ig-like C2-type domain is required for VLA4-dependent cell adhesion.
翻译后修饰	Sialoglycoprotein.
细胞定位	Membrane.

图片



15% SDS-PAGE analysis of ab219443 (3 μ g).

SDS-PAGE - Recombinant human VCAM1 protein
(His tag) (ab219443)

Please note: All products are "FOR RESEARCH USE ONLY. NOT FOR USE IN DIAGNOSTIC PROCEDURES"

Our Abpromise to you: Quality guaranteed and expert technical support

- Replacement or refund for products not performing as stated on the datasheet
- Valid for 12 months from date of delivery
- Response to your inquiry within 24 hours
- We provide support in Chinese, English, French, German, Japanese and Spanish
- Extensive multi-media technical resources to help you
- We investigate all quality concerns to ensure our products perform to the highest standards

If the product does not perform as described on this datasheet, we will offer a refund or replacement. For full details of the Abpromise, please visit <https://www.abcam.cn/abpromise> or contact our technical team.

Terms and conditions

- Guarantee only valid for products bought direct from Abcam or one of our authorized distributors