

### Recombinant Human UBE2S protein ab87756

#### 1 图像

#### 描述

产品名称	重组人UBE2S蛋白
纯度	> 90 % SDS-PAGE. ab87756 was purified using conventional chromatography techniques.
表达系统	Escherichia coli
蛋白长度	Full length protein
无动物成分	No
性质	Recombinant
种属	Human
序列	<p><b>MRGSHHHHHH GMASMTGGQQ MGRDLYDDDD</b></p> <p><b>KDRWGSMSNS VENLPPHIIR LVYKEVTTLT</b></p> <p><b>ADPPDGIKVF PNEEDLTDLQ VTIEGPEGTP</b></p> <p><b>YAGGLFRMKL LLGKDFPASP PKGYFLTKIF</b></p> <p><b>HPNVGANGEI CVNVLKRWT AELGIRHVLL</b></p> <p><b>TIKLLIHPN PESALNEEAG RLLLENYEEY</b></p> <p><b>AARARLLTEI HGGAGGPSGR AEAGRALASG</b></p> <p><b>TEASSTDPGA PGGPGGAEGP MAKKHAGERD</b></p> <p><b>KKLAAKKKTD KKRALRRL</b></p>

#### 技术指标

Our **Abpromise guarantee** covers the use of **ab87756** in the following tested applications.

The application notes include recommended starting dilutions; optimal dilutions/concentrations should be determined by the end user.

应用	SDS-PAGE
形式	Liquid

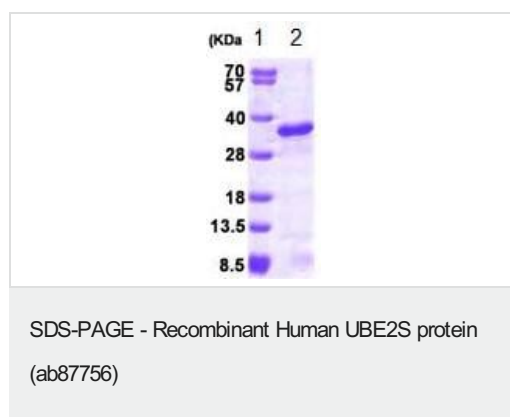
#### 制备和贮存

稳定性和存储	<p>Shipped at 4°C. Upon delivery aliquot and store at -20°C or -80°C. Avoid repeated freeze / thaw cycles.</p> <p>pH: 8.00</p> <p>Constituents: 0.0154% DTT, 0.316% Tris HCl, 20% Glycerol (glycerin, glycerine)</p>
--------	--

## 常规信息

<b>功能</b>	Accepts ubiquitin from the E1 complex and catalyzes its covalent attachment to other proteins. Catalyzes 'Lys-11'-linked polyubiquitination. Acts as an essential factor of the anaphase promoting complex/cyclosome (APC/C), a cell cycle-regulated ubiquitin ligase that controls progression through mitosis. Acts by specifically elongating 'Lys-11'-linked polyubiquitin chains initiated by the E2 enzyme UBE2C/UBCH10 on APC/C substrates, enhancing the degradation of APC/C substrates by the proteasome and promoting mitotic exit. Also acts by elongating ubiquitin chains initiated by the E2 enzyme UBE2D1/UBCH5 in vitro; it is however unclear whether UBE2D1/UBCH5 acts as a E2 enzyme for the APC/C in vivo. Also involved in ubiquitination and subsequent degradation of VHL, resulting in an accumulation of HIF1A. In vitro able to promote polyubiquitination using all 7 ubiquitin Lys residues, except 'Lys-48'-linked polyubiquitination.
<b>通路</b>	Protein modification; protein ubiquitination.
<b>序列相似性</b>	Belongs to the ubiquitin-conjugating enzyme family.
<b>翻译后修饰</b>	Autoubiquitinated by the APC/C complex during G1, leading to its degradation by the proteasome.

## 图片



15% SDS-PAGE analysis of 3µg ab87756.

**Please note:** All products are "FOR RESEARCH USE ONLY. NOT FOR USE IN DIAGNOSTIC PROCEDURES"

## Our Abpromise to you: Quality guaranteed and expert technical support

- Replacement or refund for products not performing as stated on the datasheet
- Valid for 12 months from date of delivery
- Response to your inquiry within 24 hours
- We provide support in Chinese, English, French, German, Japanese and Spanish
- Extensive multi-media technical resources to help you
- We investigate all quality concerns to ensure our products perform to the highest standards

If the product does not perform as described on this datasheet, we will offer a refund or replacement. For full details of the Abpromise, please visit <https://www.abcam.cn/abpromise> or contact our technical team.

## Terms and conditions

---

- Guarantee only valid for products bought direct from Abcam or one of our authorized distributors