

# Recombinant human Tryptophan Hydroxylase/TPH protein (Active) ab206448

2 图像

描述	
产品名称	重组人Tryptophan Hydroxylase/TPH蛋白(Active)
生物活性	<b>Assay Conditions:</b> Reaction was performed at room temperature in assay buffer containing 50 mM MOPS, pH 7.0, 60 µM tryptophan, 100 mM ammonium sulfate, 100 µM ferrous ammonium sulfate, 0.5 mM TCEP, 0.3 mM 6-methyl tetrahydropterin, 0.05 mg/ml catalase, 1 mM DTT and TPH1. Fluorescence signal was measured at Em360nm/Ex300nm.
纯度	> 90 % SDS-PAGE. Affinity purified.
表达系统	Escherichia coli
Accession	<u><b>P17752</b></u>
蛋白长度	Protein fragment
无动物成分	No
性质	Recombinant
种属	Human
序列	MHHHHHHVPWFPKKISDL DHCANRVLMYGSELDADHPGFKDN VYRKRKY FADLAMNYKHGDP I PKVEFTEEEIKTWGTVFQELNKLYPTHA CREYLKNL PLLSKYCGYREDNIPQLEDVSNFLKERTGFSIRPVAGYLSPR DFLSGLAF RVFHCTQYVRHSSDPFYTPEDTCHELLGHVPLLAEPSFAQF SQEIGLAS LGASEEAVQKLATCYFFTVEFGLCKQDQGLRVFGAGLLSSIS ELKHALSG HAKVKPFDPKITCKQECLITTFQDVYFVSESFEDAKEKMREF TKTIKRPF GVKYNPYTRSIQILKDTKSITSA
预测分子量	37 kDa including tags
氨基酸	105 to 420
标签	His tag N-Terminus
技术指标	

Our **Abpromise guarantee** covers the use of **ab206448** in the following tested applications.

The application notes include recommended starting dilutions; optimal dilutions/concentrations should be determined by the end user.

应用	SDS-PAGE Functional Studies
形式	Liquid
补充说明	This product was previously labelled as Tryptophan Hydroxylase

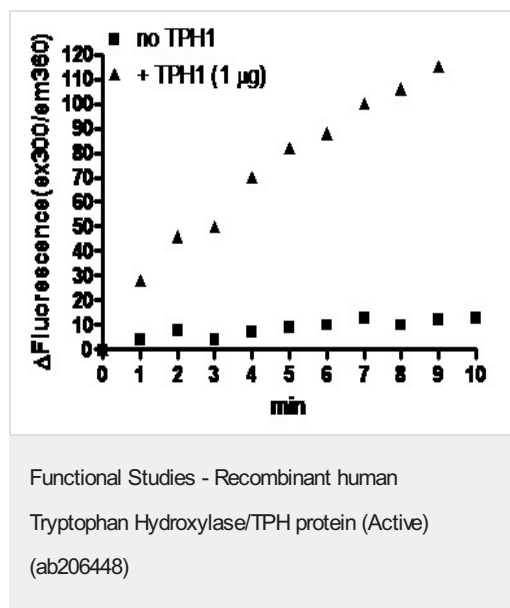
## 制备和贮存

稳定性和存储	Shipped on Dry Ice. Store at -80°C. Avoid freeze / thaw cycle. pH: 8.00 Preservative: 1.16% Imidazole Constituents: 0.63% Tris HCl, 0.64% Sodium chloride, 0.02% Potassium chloride, 0.04% Tween, 20% Glycerol (glycerin, glycerine), 0.05% (R*,R*)-1,4-Dimercaptobutan-2,3-diol  Storing diluted enzyme is not recommended, if necessary, use carrier protein (BSA 0.1 – 0.5%). This product is an active protein and may elicit a biological response in vivo, handle with caution.
--------	---

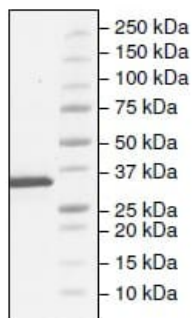
## 常规信息

组织特异性	Isoform 2 seems to be less widely expressed than isoform 1.
通路	Aromatic compound metabolism; serotonin biosynthesis; serotonin from L-tryptophan: step 1/2.
序列相似性	Belongs to the bipterin-dependent aromatic amino acid hydroxylase family. Contains 1 ACT domain.

## 图片



Activity assay using ab206448



6-20% SDS-PAGE stained with Coomassie Blue.

Lane 1: ab206448 (5 µg)

Lane 2: Protein Marker

SDS-PAGE - Recombinant human Tryptophan  
Hydroxylase/TPH protein (Active) (ab206448)

**Please note:** All products are "FOR RESEARCH USE ONLY. NOT FOR USE IN DIAGNOSTIC PROCEDURES"

### Our Abpromise to you: Quality guaranteed and expert technical support

---

- Replacement or refund for products not performing as stated on the datasheet
- Valid for 12 months from date of delivery
- Response to your inquiry within 24 hours
- We provide support in Chinese, English, French, German, Japanese and Spanish
- Extensive multi-media technical resources to help you
- We investigate all quality concerns to ensure our products perform to the highest standards

If the product does not perform as described on this datasheet, we will offer a refund or replacement. For full details of the Abpromise, please visit <https://www.abcam.cn/abpromise> or contact our technical team.

### Terms and conditions

---

- Guarantee only valid for products bought direct from Abcam or one of our authorized distributors