

Recombinant Human TrkB protein ab174057

1 图像

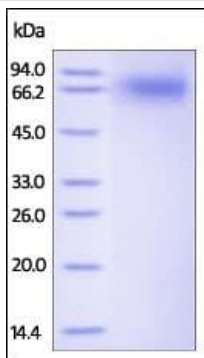
描述	
产品名称	重组人TrkB蛋白
纯度	> 95 % SDS-PAGE.
内毒素水平	< 1.000 Eu/μg
表达系统	HEK 293 cells
Accession	<u>Q16620-1</u>
蛋白长度	Protein fragment
无动物成分	No
性质	Recombinant
种属	Human
序列	CPTSCKCSA SRIWCSDPSP GIVAFPRLEP NSVDPENITE IFIANQKRLE IINEDDVEAY VGLRNLTIVD SGLKFVAHKA FLKNSNLQHI NFTRNKLTSL SRKHFRHLDL SELILVGPNF TCSCDIMWIK TLQEAKSSPD TQDLYCLNES SKNIPLANLQ IPNCGLPSAN LAAPNLTVEE GKSITLSCSV AGDPVPNMYW DVGNLVSKHM NETSHTQGSL RITNISSDDS GKQISCVAEN LVGEDQDSVN LTVHFAPTIT FLESPTSDDH WCIPFTVKGN PKPALQWFYN GAILNESKYI CTKIHVTNHT EYHGCLQLDN PTHMNNGDYT LIAKNEYGKD EKQISAHFMG WPGIDDGANP NYPDVIYEDY GTAANDIGDT TNRSNEIPST DVTDKTGREH
预测分子量	45 kDa including tags
氨基酸	32 to 430
标签	His tag C-Terminus
额外的序列信息	Extracellular domain.

技术指标

Our **Abpromise guarantee** covers the use of **ab174057** in the following tested applications.

The application notes include recommended starting dilutions; optimal dilutions/concentrations should be determined by the end user.

应用	SDS-PAGE
形式	Lyophilized
制备和贮存	
稳定性和存储	<p>Shipped at 4°C. Store at 4°C prior to reconstitution. Store at -20°C or -80°C. For long term storage it is recommended to add a carrier protein on reconstitution (0.1% HSA or BSA).</p> <p>pH: 7.40</p> <p>Constituents: 5% Trehalose, 95% PBS</p>
复溶	Reconstitute with sterile deionized water to a concentration of 400 µg/ml.
常规信息	
功能	Receptor for brain-derived neurotrophic factor (BDNF), neurotrophin-3 and neurotrophin-4/5 but not nerve growth factor (NGF). Involved in the development and/or maintenance of the nervous system. This is a tyrosine-protein kinase receptor. Known substrates for the TRK receptors are SHC1, PI-3 kinase, and PLC-gamma-1.
组织特异性	Isoform TrkB is widely expressed, mainly in the nervous tissue. In the CNS, expression is observed in the cerebral cortex, hippocampus, thalamus, choroid plexus, granular layer of the cerebellum, brain stem, and spinal cord. In the peripheral nervous system, it is expressed in many cranial ganglia, the opthalmic nerve, the vestibular system, multiple facial structures, the submaxillary glands, and dorsal root ganglia. Isoform TrkB-T1 is expressed in multiple tissues, mainly in brain, pancreas, kidney and heart. Isoform TrkB-T-Shc is predominantly expressed in brain.
序列相似性	<p>Belongs to the protein kinase superfamily. Tyr protein kinase family. Insulin receptor subfamily. Contains 2 Ig-like C2-type (immunoglobulin-like) domains.</p> <p>Contains 2 LRR (leucine-rich) repeats.</p> <p>Contains 1 LRRCT domain.</p> <p>Contains 1 LRRNT domain.</p> <p>Contains 1 protein kinase domain.</p>
翻译后修饰	Ligand-mediated auto-phosphorylation.
细胞定位	Membrane.
图片	



SDS-PAGE - Recombinant Human TrkB protein
(ab174057)

The purity of ab174057 was determined by reduced SDS-PAGE and staining overnight with Coomassie Blue. DTT-reduced ab174057 migrates at 60-90 kDa due to glycosylation (predicted MW with tag of 45kDa).

Please note: All products are "FOR RESEARCH USE ONLY. NOT FOR USE IN DIAGNOSTIC PROCEDURES"

Our Abpromise to you: Quality guaranteed and expert technical support

- Replacement or refund for products not performing as stated on the datasheet
- Valid for 12 months from date of delivery
- Response to your inquiry within 24 hours
- We provide support in Chinese, English, French, German, Japanese and Spanish
- Extensive multi-media technical resources to help you
- We investigate all quality concerns to ensure our products perform to the highest standards

If the product does not perform as described on this datasheet, we will offer a refund or replacement. For full details of the Abpromise, please visit <https://www.abcam.cn/abpromise> or contact our technical team.

Terms and conditions

- Guarantee only valid for products bought direct from Abcam or one of our authorized distributors