

# Recombinant Human TrkB protein ab132927

### 1 图像

#### 描述

<b>产品名称</b>	重组人TrkB蛋白	
<b>表达系统</b>	Wheat germ	
<b>Accession</b>	<b><u>Q16620-2</u></b>	
<b>蛋白长度</b>	Full length protein	
<b>无动物成分</b>	No	
<b>性质</b>	Recombinant	
<b>种属</b>	Human	
<b>序列</b>	<p>MSSWIRWHGPAMARLWGFCWLVVGFWRAAFACPTSCCKCSASR            IWCDPSP            GIVAFPRLEPNSVDPENITEIFIANQKRLEIINEDDVEAYVG            LRNLTIVD            SGLKFVAHKAFKNSNLQHINFTRNKLTSLSRKHFRHLDLSE            LILVGNPF            TCSCDIMWIKTLQEAKSSPDTQDLYCLNESSKNIPLANLQIP            NCGLPSAN            LAAPNLVVEEGKSITLSCSVAGDPVPMYWDVGNLVSKHMNE            TSHTQGSL            RITNISSDDSGKQISCVAENLVGEDQDSVNLTVHFAPTITFL            ESPTSDHH            WCIPFTVKGNPKPALQWFYNGAILNESKYICTKIHVTNHTEY            HGCLQLDN            PTHMNGDYTLIAKNEYGKDEKQISAHFMGWPGIDDGANPNY            PDVIYEDY            GTAANDIGDTTNRSNEIPSTDVTDKGTREHLSVYAVVVIASV            VGFCLLVM LFLLLKLARHSKFGMKGFVLFHKIPLDG</p>	
<b>预测分子量</b>	78 kDa including tags	
<b>氨基酸</b>	1 to 477	

#### 技术指标

Our **Abpromise guarantee** covers the use of **ab132927** in the following tested applications.

The application notes include recommended starting dilutions; optimal dilutions/concentrations should be determined by the end user.

**应用** SDS-PAGE

	ELISA
	Western blot
<b>形式</b>	Liquid

## 制备和贮存

<b>稳定性和存储</b>	Shipped on dry ice. Upon delivery aliquot and store at -80°C. Avoid freeze / thaw cycles. pH: 8.00 Constituents: 0.31% Glutathione, 0.79% Tris HCl
---------------	--

## 常规信息

<b>功能</b>	Receptor for brain-derived neurotrophic factor (BDNF), neurotrophin-3 and neurotrophin-4/5 but not nerve growth factor (NGF). Involved in the development and/or maintenance of the nervous system. This is a tyrosine-protein kinase receptor. Known substrates for the TRK receptors are SHC1, PI-3 kinase, and PLC-gamma-1.
-----------	--

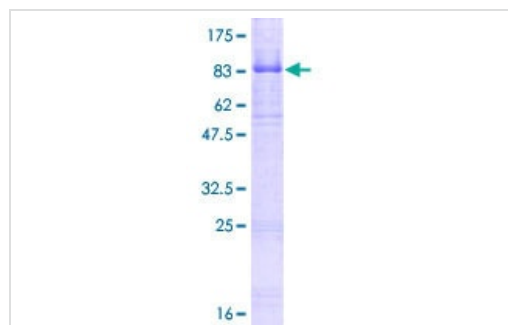
<b>组织特异性</b>	Isoform TrkB is widely expressed, mainly in the nervous tissue. In the CNS, expression is observed in the cerebral cortex, hippocampus, thalamus, choroid plexus, granular layer of the cerebellum, brain stem, and spinal cord. In the peripheral nervous system, it is expressed in many cranial ganglia, the opthalmic nerve, the vestibular system, multiple facial structures, the submaxillary glands, and dorsal root ganglia. Isoform TrkB-T1 is expressed in multiple tissues, mainly in brain, pancreas, kidney and heart. Isoform TrkB-T-Shc is predominantly expressed in brain.
--------------	--

<b>序列相似性</b>	Belongs to the protein kinase superfamily. Tyr protein kinase family. Insulin receptor subfamily. Contains 2 Ig-like C2-type (immunoglobulin-like) domains. Contains 2 LRR (leucine-rich) repeats. Contains 1 LRRCT domain. Contains 1 LRRNT domain. Contains 1 protein kinase domain.
--------------	--

<b>翻译后修饰</b>	Ligand-mediated auto-phosphorylation.
--------------	---------------------------------------

<b>细胞定位</b>	Membrane.
-------------	-----------

## 图片



12.5% SDS-PAGE analysis of ab132927, stained with Coomassie Blue.

SDS-PAGE - Recombinant Human TrkB protein  
(ab132927)

**Please note:** All products are "FOR RESEARCH USE ONLY. NOT FOR USE IN DIAGNOSTIC PROCEDURES"

### **Our Abpromise to you: Quality guaranteed and expert technical support**

---

- Replacement or refund for products not performing as stated on the datasheet
- Valid for 12 months from date of delivery
- Response to your inquiry within 24 hours
- We provide support in Chinese, English, French, German, Japanese and Spanish
- Extensive multi-media technical resources to help you
- We investigate all quality concerns to ensure our products perform to the highest standards

If the product does not perform as described on this datasheet, we will offer a refund or replacement. For full details of the Abpromise, please visit <https://www.abcam.cn/abpromise> or contact our technical team.

### **Terms and conditions**

---

- Guarantee only valid for products bought direct from Abcam or one of our authorized distributors