

Recombinant human Transferrin protein ab83560

4 图像

| 描述 | |
|-------|--|
| 产品名称 | 重组人Transferrin蛋白 |
| 生物活性 | The activity of ab83560 was measured by its ability to support the growth of HepG2 cells under conditions of reduced serum. Typically 0.1 to 1 µg enhances cell proliferation. |
| 纯度 | > 95 % SDS-PAGE. |
| 表达系统 | HEK 293 cells |
| 蛋白长度 | Full length protein |
| 无动物成分 | No |
| 性质 | Recombinant |
| 种属 | Human |
| 序列 | <div>Theoretical sequence: VPDKTVRWCAVSEHEATKQSF RDHMKSVIPSDGPSVACVKK ASY L DCIRAI AANEADAVTL DAGLVYDAYLAPNNLKPVVAEFYGSK ED PQTF YYAVAVVKKDSGFQMNQLRGKK SHTGLGRSAGWNIPIGLL YCDLPEP RKPLEKAVANFFSGSCAPCADGTDFPQLCQLCPGCGCS TLNQYFGYSG AFKCLKNGAGDVAFVKHSTIFENLANKADRDQYEL LCLDNTRKPVDEY KDCHLAQVPSHTVVARSMGGKEDLIWELLNQA QEHFGKDKSKEFQLFS SPHGKDLLFKDSAHGFLKVP PRMDAKMYL GYEYVTAIRNLREGTCQEA PTDECKPVKWCALSHHERLKCDEWSV NSVGKIECVSAETTEDCIAKIM NGEADAMSLDGGFVYIAGKCGLV PVLAENYNKSDNCEDTPEAGYFAVA VVKKSASDLTWDNLKGKKSC HTAVGRTAGWNIPMGLLYNKINHCRFDE FFSEGAPGSKKDSSLC KLCMGSGNLNCEPNNKEGYGYTGAFRCLVE KGDVAFVKHQTVPQ</div> |

NTGGKNPDPWAKNLNEKDYELLCLDGTRKPVVEY
ANCHLARAPNH
AVVTRKDKEACVHKILRQQQLFGSNVTDCSGNFCLF
RSETKDLL
FRDDTVCLAKLHDRNTYEKYLGEYVKA VGNLRKCSTSSL
LEACT FRRP

技术指标

Our **Abpromise guarantee** covers the use of **ab83560** in the following tested applications.

The application notes include recommended starting dilutions; optimal dilutions/concentrations should be determined by the end user.

应用 Functional Studies

SDS-PAGE

形式 Lyophilized

制备和贮存

稳定性和存储 Shipped at 4°C. After reconstitution store at -20°C. Avoid freeze / thaw cycles.

Constituents: 10% Trehalose, 1% Human serum albumin

This product is an active protein and may elicit a biological response in vivo, handle with caution.

复溶 It is recommended that 0.5 ml of sterile phosphate-buffered saline be added to the vial.

常规信息

功能 Transferrins are iron binding transport proteins which can bind two Fe(3+) ions in association with the binding of an anion, usually bicarbonate. It is responsible for the transport of iron from sites of absorption and heme degradation to those of storage and utilization. Serum transferrin may also have a further role in stimulating cell proliferation.

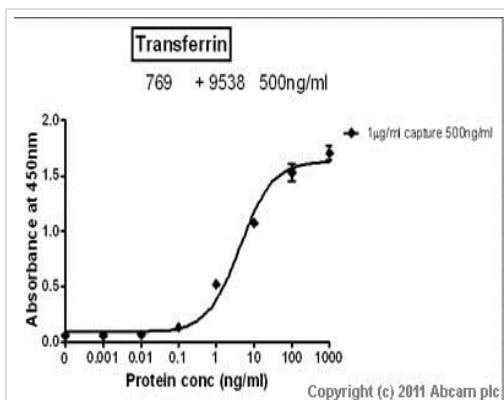
组织特异性 Expressed by the liver and secreted in plasma.

疾病相关 Defects in TF are the cause of atransferrinemia (ATRAF) [MIM:209300]. Atransferrinemia is rare autosomal recessive disorder characterized by iron overload and hypochromic anemia.

序列相似性 Belongs to the transferrin family.
Contains 2 transferrin-like domains.

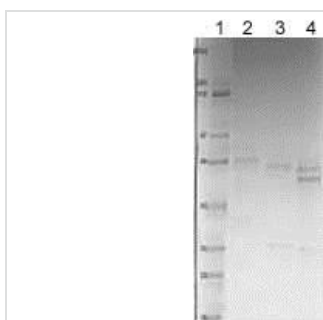
细胞定位 Secreted.

图片



Sandwich ELISA - Recombinant human Transferrin protein (ab83560)

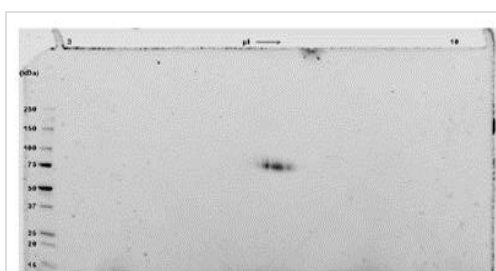
Standard curve for Transferrin (Analyte: ab83560); dilution range 1pg/ml to 1µg/ml using Capture Antibody Mouse monoclonal [HTF-14] to Transferrin (**ab769**) at 1µg/ml and Detector Antibody Rabbit polyclonal to Transferrin (**ab9538**) at 0.5µg/ml.



SDS-PAGE - Recombinant human Transferrin protein (ab83560)

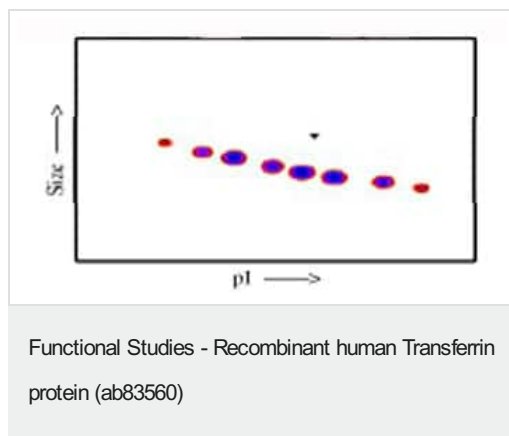
Lane 1 – MW markers; Lane 2 – ab83560; Lane 3 – ab83560 treated with PNGase F to remove potential N-linked glycans; Lane 4 – ab83560 treated with a glycosidase cocktail to remove potential N- and Olinked glycans. Approximately 5 µg of protein was loaded per lane; Gel was stained using Coomassie.

Drop in MW after treatment with PNGase F indicates presence of N-linked glycans. A further drop in MW after treatment with the glycosidase cocktail indicates the presence of O-linked glycans. Additional bands in lane 3 and lane 4 are glycosidase enzymes.



SDS-PAGE - Recombinant human Transferrin protein (ab83560)

A sample of ab83560 without carrier protein was reduced and alkylated and focused on a 3-10 IPG strip then run on a 4-20% Tris HCl 2D gel. Approximately 40 µg of protein was load; Gel was stained using Deep Purple™. Spot train indicates presence of multiple isoforms of Transferrin. Spots within the spot train were cut from the gel and identified as Transferrin by protein mass fingerprinting.



Post-translational modifications result in protein heterogeneity. The densitometry scan demonstrates that ab83560 exists in multiple isoforms, which differ according to their level of posttranslational modification. Expression of these isoforms is highly significant for cell biology, as they more closely resemble the native human proteins. The triangle indicates theoretical pI and MW of the protein.

Please note: All products are "FOR RESEARCH USE ONLY. NOT FOR USE IN DIAGNOSTIC PROCEDURES"

Our Abpromise to you: Quality guaranteed and expert technical support

- Replacement or refund for products not performing as stated on the datasheet
- Valid for 12 months from date of delivery
- Response to your inquiry within 24 hours
- We provide support in Chinese, English, French, German, Japanese and Spanish
- Extensive multi-media technical resources to help you
- We investigate all quality concerns to ensure our products perform to the highest standards

If the product does not perform as described on this datasheet, we will offer a refund or replacement. For full details of the Abpromise, please visit <https://www.abcam.cn/abpromise> or contact our technical team.

Terms and conditions

- Guarantee only valid for products bought direct from Abcam or one of our authorized distributors