

Recombinant Human TNIP1 protein ab101108

1 图像

描述

产品名称	重组人TNIP1蛋白
纯度	> 75 % SDS-PAGE. ab101108 was purified using conventional chromatography techniques.
表达系统	Escherichia coli
Accession	<u>Q15025</u>
蛋白长度	Protein fragment
无动物成分	No
性质	Recombinant
种属	Human
序列	<p>MGSSHHHHHSSGLVPRGSHMSNVTASPTAPACPSDKPAP VQKPPSSGTS SEFEVVTPEEQNSPESSSHANAMALGPLPREDGNLMLHLQRL ETTLSVCA EEDPHGQLFTHLGRMALEFNRLASKVHKNEQRTSILQTLCEQ LRKENEAL KAKLDKGLEQRDQAAERLREENLELKKLLMSGNGKEGASGRP GSPKMEGT GKKAVAGQQQASVTAGKVPEVVALGAAEKKVKMLEQQRSELL EVNKQWDQ HFRSMKQQYEQKITELRQKLADLQKQVTDLEAEREQKQRDFD RKLLLAKS KIEMEETDKEQLTAEAKELRQKVKYLQDQLSPLTRQREYQEK EIQRLNKA LEEALSIQTPPSSPPTAFGSPGAGALLRKQELVTQNELLKQ QVKIFEED FQRERSDRERMNEEKEELKKQVEKLQAQVTLNAQLKAFKDE EKAREALR QQKRKAKA</p>
预测分子量	52 kDa including tags
氨基酸	94 to 530
标签	His tag N-Terminus

技术指标

Our **Abpromise guarantee** covers the use of **ab101108** in the following tested applications.

The application notes include recommended starting dilutions; optimal dilutions/concentrations should be determined by the end user.

应用	SDS-PAGE
	Mass Spectrometry
质谱法	MALDI-TOF
形式	Liquid

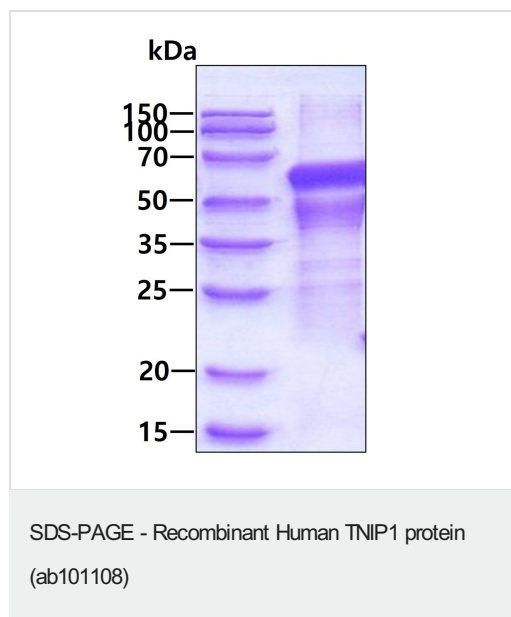
制备和贮存

稳定性和存储	Shipped at 4°C. Upon delivery aliquot and store at -20°C or -80°C. Avoid repeated freeze / thaw cycles. pH: 7.50 Constituents: 0.077% DTT, 0.316% Tris HCl, 20% Glycerol (glycerin, glycerine), 1.16% Sodium chloride
--------	---

常规信息

功能	Interacts with zinc finger protein A20/TNFAIP3 and inhibits TNF-induced NF-kappa-B-dependent gene expression by interfering with an RIP- or TRAF2-mediated transactivation signal (By similarity). Increases cell surface CD4(T4) antigen expression. Interacts with HIV-1 matrix protein and is packaged into virions and overexpression can inhibit viral replication. May regulate matrix nuclear localization, both nuclear import of PIC (Preintegration complex) and export of GAG polyprotein and viral genomic RNA during virion production.
组织特异性	Ubiquitous. Strongly expressed in peripheral blood lymphocytes, spleen and skeletal muscle, and is weakly expressed in the brain.
细胞定位	Cytoplasm. Nucleus. Shuttles between the nucleus and cytoplasm in a CRM1-dependent manner.

图片



SDS-PAGE analysis of ab101108 (3 µg).

Please note: All products are "FOR RESEARCH USE ONLY. NOT FOR USE IN DIAGNOSTIC PROCEDURES"

Our Abpromise to you: Quality guaranteed and expert technical support

- Replacement or refund for products not performing as stated on the datasheet
- Valid for 12 months from date of delivery
- Response to your inquiry within 24 hours

- We provide support in Chinese, English, French, German, Japanese and Spanish
- Extensive multi-media technical resources to help you
- We investigate all quality concerns to ensure our products perform to the highest standards

If the product does not perform as described on this datasheet, we will offer a refund or replacement. For full details of the Abpromise, please visit <https://www.abcam.cn/abpromise> or contact our technical team.

Terms and conditions

- Guarantee only valid for products bought direct from Abcam or one of our authorized distributors