

Recombinant Human TLR2 protein (His tag) ab222352

1 图像

描述		
产品名称	重组人TLR2蛋白(His tag)	
纯度	> 90 % SDS-PAGE. Affinity purified	
内毒素水平	< 1.000 Eu/μg	
表达系统	Baculovirus infected insect cells	
Accession	<u>O60603</u>	
蛋白长度	Protein fragment	
无动物成分	No	
性质	Recombinant	
种属	Human	
序列	KEESSNQASLSCDRNGICKGSSGSLNSIPSGLTEAVKSLDLS NNRITYIS NSDLQRCVNLQALVLTSTNGINTIEEDSFSSLGSLEHLDLSYN YLSNLSSS WFKPLSSLTFLNLLGNPYKTLGETSLFSLTKLQILRVGNMD TFTKIQRK DFAGLTFLEELEIDASDLQSYEPKSLKSIQNVSHLILHMKQH ILLLEIFV DVTSSVECLELRDLDLTFHFSELSTGETNSLIKKFTFRNVK ITDESLFQ VMKLLNQISGLLELEFDDCTLNGVGNFRASDNRVIDPGKVE TLTIRRLH IPRFYLFYDLSTLYSLTERVKRITVENSKVFLVPCLLSQHLK SLEYLDLS ENLMVEEYLKNSACEDAWPSLQTLILRQNHLASLEKTGETLL TLKNLTNI DISKNSFHSMPEQCQWPEKMKYLNLSSTRIHSVTGCIPKTLE ILDVSNNN LNLFSLNLPQLKELYISRNKLMTLPDASLLPMLLVLKISRNA ITTFSKEQ LDSFHTLKTLEAGGNNFICSCEFLSFTQEQQALAKVLIDWPA NYLCDSPS HVRGQQVQDVRLSVSECHRTLEHHHHHH	
预测分子量	66 kDa including tags	

氨基酸	19 to 588
标签	His tag C-Terminus
额外的序列信息	NP_003255.

技术指标

Our **Abpromise guarantee** covers the use of **ab222352** in the following tested applications.

The application notes include recommended starting dilutions; optimal dilutions/concentrations should be determined by the end user.

应用	SDS-PAGE
形式	Liquid

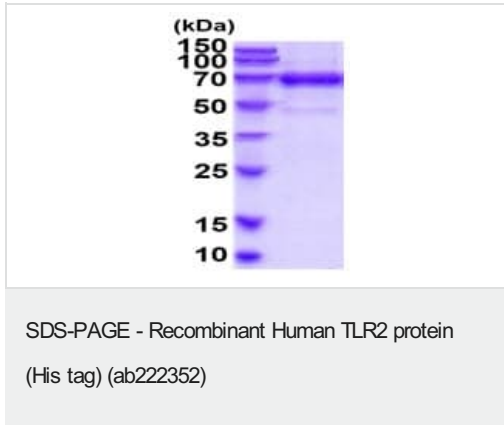
制备和贮存

稳定性和存储	Shipped at 4°C. Store at +4°C short term (1-2 weeks). Upon delivery aliquot. Store at -20°C or -80°C. Avoid freeze / thaw cycle. pH: 7.40 Constituents: 10% Glycerol (glycerin, glycerine), PBS
--------	---

常规信息

功能	Cooperates with LY96 to mediate the innate immune response to bacterial lipoproteins and other microbial cell wall components. Cooperates with TLR1 to mediate the innate immune response to bacterial lipoproteins or lipopeptides. Acts via MYD88 and TRAF6, leading to NF-kappa-B activation, cytokine secretion and the inflammatory response. May also promote apoptosis in response to lipoproteins. Recognizes mycoplasmal macrophage-activating lipopeptide-2kD (MALP-2), soluble tuberculosis factor (STF), phenol-soluble modulin (PSM) and B.burgdorferi outer surface protein A lipoprotein (OspA-L) cooperatively with TLR6.
组织特异性	Highly expressed in peripheral blood leukocytes, in particular in monocytes, in bone marrow, lymph node and in spleen. Also detected in lung and in fetal liver. Levels are low in other tissues.
序列相似性	Belongs to the Toll-like receptor family. Contains 14 LRR (leucine-rich) repeats. Contains 1 TIR domain.
翻译后修饰	Glycosylation of Asn-442 is critical for secretion of the N-terminal ectodomain of TLR2.
细胞定位	Membrane.

图片



15% SDS-PAGE analysis of 3 µg ab222352.

Please note: All products are "FOR RESEARCH USE ONLY. NOT FOR USE IN DIAGNOSTIC PROCEDURES"

Our Abpromise to you: Quality guaranteed and expert technical support

- Replacement or refund for products not performing as stated on the datasheet
- Valid for 12 months from date of delivery
- Response to your inquiry within 24 hours
- We provide support in Chinese, English, French, German, Japanese and Spanish
- Extensive multi-media technical resources to help you
- We investigate all quality concerns to ensure our products perform to the highest standards

If the product does not perform as described on this datasheet, we will offer a refund or replacement. For full details of the Abpromise, please visit <https://www.abcam.cn/abpromise> or contact our technical team.

Terms and conditions

- Guarantee only valid for products bought direct from Abcam or one of our authorized distributors